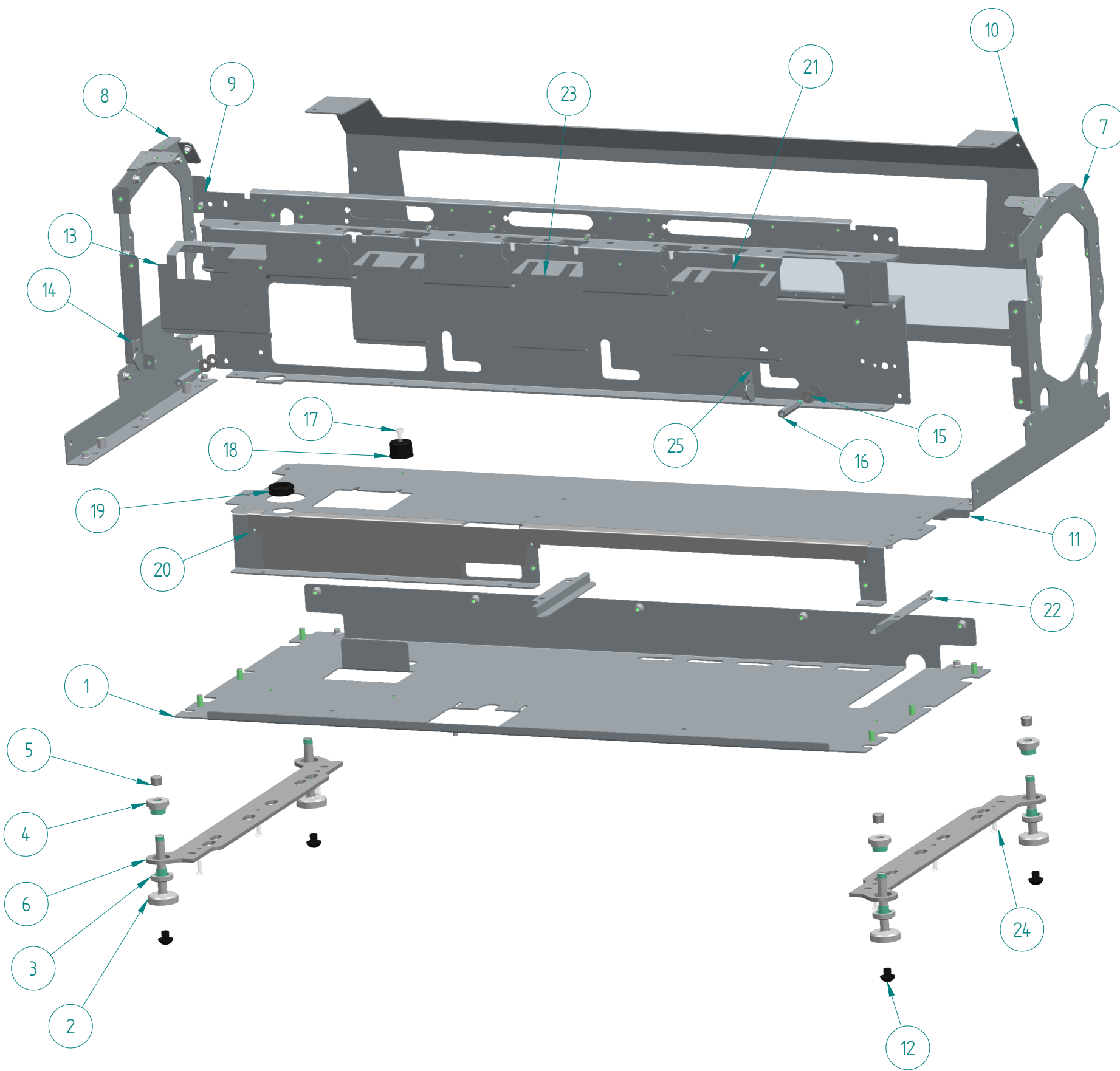


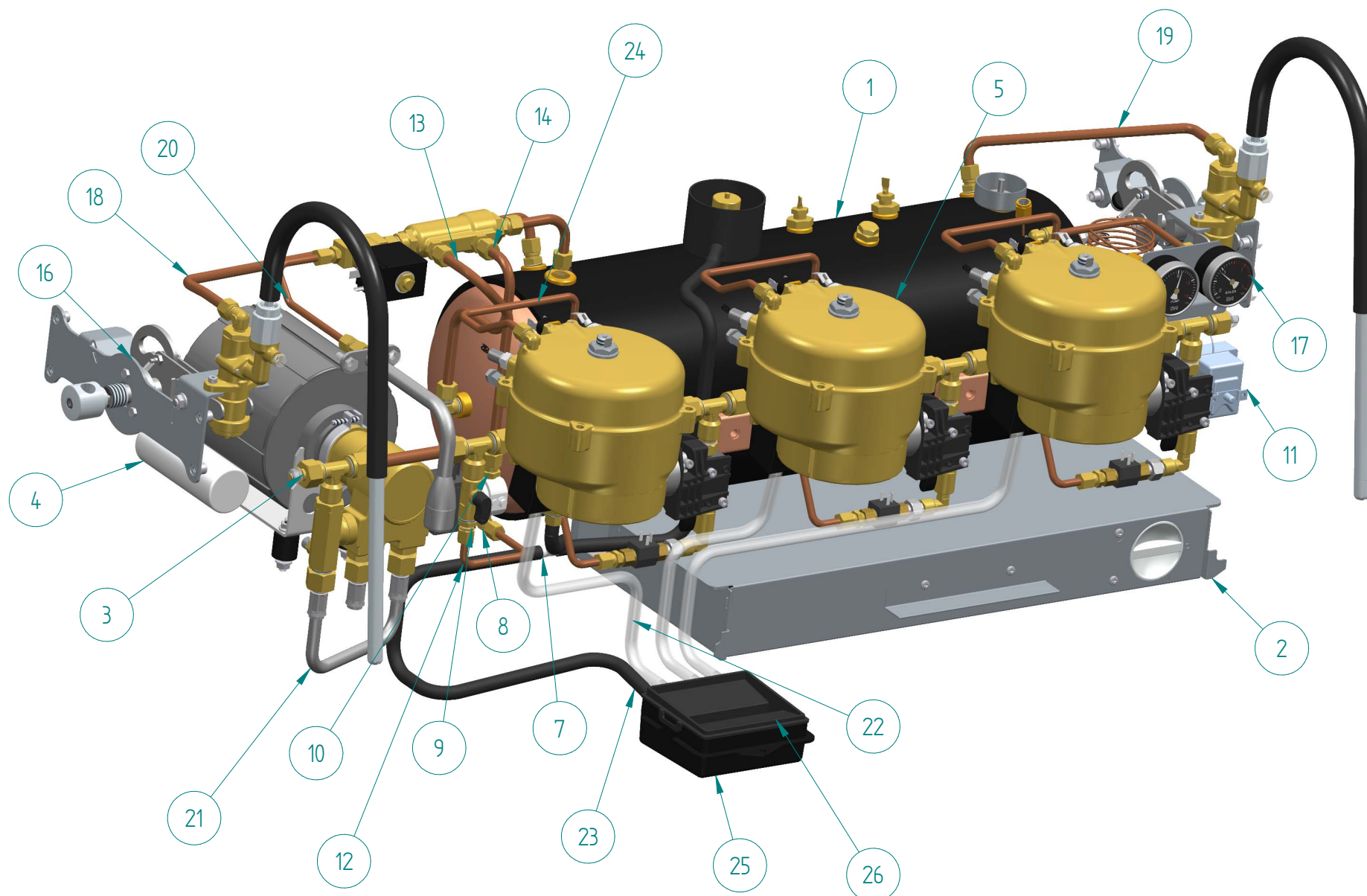
DALLA
CORTE

SPARE PARTS CATALOGUE

ZERO



ITEM	CODE	DESCRIPTION	NOTE
	A-MC-4001	ASSEMBLED FRAME 3GR	NOT ORDINABLE
	A-MC-4000	ASSEMBLED FRAME 2GR	NOT ORDINABLE
1	B-MC-4001	CHASSIS BASE 3GR	NOT ORDINABLE
1 a	B-MC-4000	CHASSIS BASE 2GR	NOT ORDINABLE
2	B-MC-4420	FOOT BASE	
3	B-MC-4419	BLOCKING FERRULE NUT	
4	B-MC-4418	ADJUSTABLE FOOT FERRULE	
5	B-MC-4417	FINISHING FOOT CAP	
6	B-MC-4012	SIDE FOOT FINISHING	
7	B-MC-4010	RIGHT SIDE CHASSIS	NOT ORDINABLE
8	B-MC-4011	LEFT SIDE CHASSIS	NOT ORDINABLE
9	B-MC-4005	FRONT CROSSPIECE CHASSIS 3GR	NOT ORDINABLE
9 a	B-MC-4004	FRONT CROSSPIECE CHASSIS 2GR	NOT ORDINABLE
10	B-MC-4007	REAR CROSSPIECE CHASSIS 3GR	NOT ORDINABLE
10 a	B-MC-4006	REAR CROSSPIECE CHASSIS 2GR	NOT ORDINABLE
11	B-MC-4003	INTERMEDIATE CHASSIS BASE 3GR	NOT ORDINABLE
11 a	B-MC-4002	INTERMEDIATE CHASSIS BASE 2GR	NOT ORDINABLE
12	B-00-0196	RUBBER FOOT	
13	B-MC-4024	LEFT GROUP COVER SUPPORT	
14	B-MC-4018	LEFT MANIFOLD BRACKET	
15*	B-00-0243	WASHER A2 DIN 9021 M6	
16	B-00-0427	HEXAGONAL M/F SUPPORT M6 L 50	
17	B-00-0109	SCREW TCEI A2 M6x16 DIN912	
18	B-MC-0187	RUBBER ANTIVIBRATION H20 SH50	
19	B-00-0432	GROMMET Ø.27 EPDM	
20	B-MC-4026	TRAY CARTER 3GR	
20 a	B-MC-4021	TRAY CARTER 2GR	
21	B-MC-4023	RIGHT GROUP COVER SUPPORT	
22	B-MC-4008	ELECTRIC BOX GUIDE	
23	B-MC-4025	CENTRAL GROUP COVER SUPPORT	
24	B-00-0434	SCREW M6 x 16 TSP A2 DIN 7991	
25	B-MC-4017	RIGHT MANIFOLD BRACKET	



ITEM	CODE	DESCRIPTION	NOTE
1	A-MC-4101A	COMPLETE BOILER 13 L	See sheet 08
1 a	A-MC-4100A	COMPLETE BOILER 7 L	See sheet 08
2	A-MC-4211	ELECTRICAL SYSTEM SET 3 GROUPS	See sheet 16
2 a	A-MC-4204	ELECTRICAL SYSTEM SET 2 GROUPS	See sheet 16
3	A-MC-4105	COMPLETE MANIFOLD 3GR	See sheet 09
3 a	A-MC-4104	COMPLETE MANIFOLD 2GR	See sheet 09
4	A-MC-0024	3-4 G COMPLETE MOTOR PUMP	See sheet 06
5	A-MC-4102	ASSEMBLED GROUPHEAD	See sheet 14
6*	A-MC-4106	HOT WATER GROUP	See sheet 07
7	B-00-0188	PLASTIC T-COUPLING D10	
8	B-00-0130A	L-COUPLING 237 D6 1/8"	
9	B-00-0445	SOLENOID VALVE 2-WAY+RF 24V CC	
10	B-00-0101A	STRAIGHT COUPL 1/8" D8 CW510L	
11	B-00-0023	SAFETY THERMOSTAT 3F 25A	
12	B-MC-4120	MANIFOLD - EVC PIPE	
13	B-MC-4122	EVC - EXCHANGER PIPE D8	
14	B-MC-4123	EXCHANGER-BOILER PIPE D8	
15*	A-MC-4111A	COMPLETE STEAM TAP RIGHT	See sheet 13
16	A-MC-4112A	COMPLETE STEAM TAP LEFT	See sheet 13
17	A-MC-4109	PRESSURE GAUGE ASSEMBLY	See sheet 12
18	B-MC-4127A	STEAM PIPE LEFT D8	
19	B-MC-4126A	STEAM PIPE RIGHT D8	
20	B-MC-4125	EV - THE PIPE D6	
21	B-00-0360	FLEX PIPE 3/8" L22,5	
22	B-00-0325	TRANSPARENT SILICONE PIPE 6x10	
23	B-00-0084	BLACK SIL.PIPE SH 60 S.ø8 x 12	
24	B-MC-4121	CV - GROUP PIPE D6	
25	B-MC-4100A	DRAIN BOX	
26	B-MC-4101A	DRAIN BOX COVER	
27**	B-MC-4109	UPPER GROUP INSULATION	
28**	B-MC-4110	LOWER GROUP INSULATION	
29**	B-MC-2094A	GIGLEUR 0.75	

DALLA CORTE
SPARE PARTS CATALOGUE

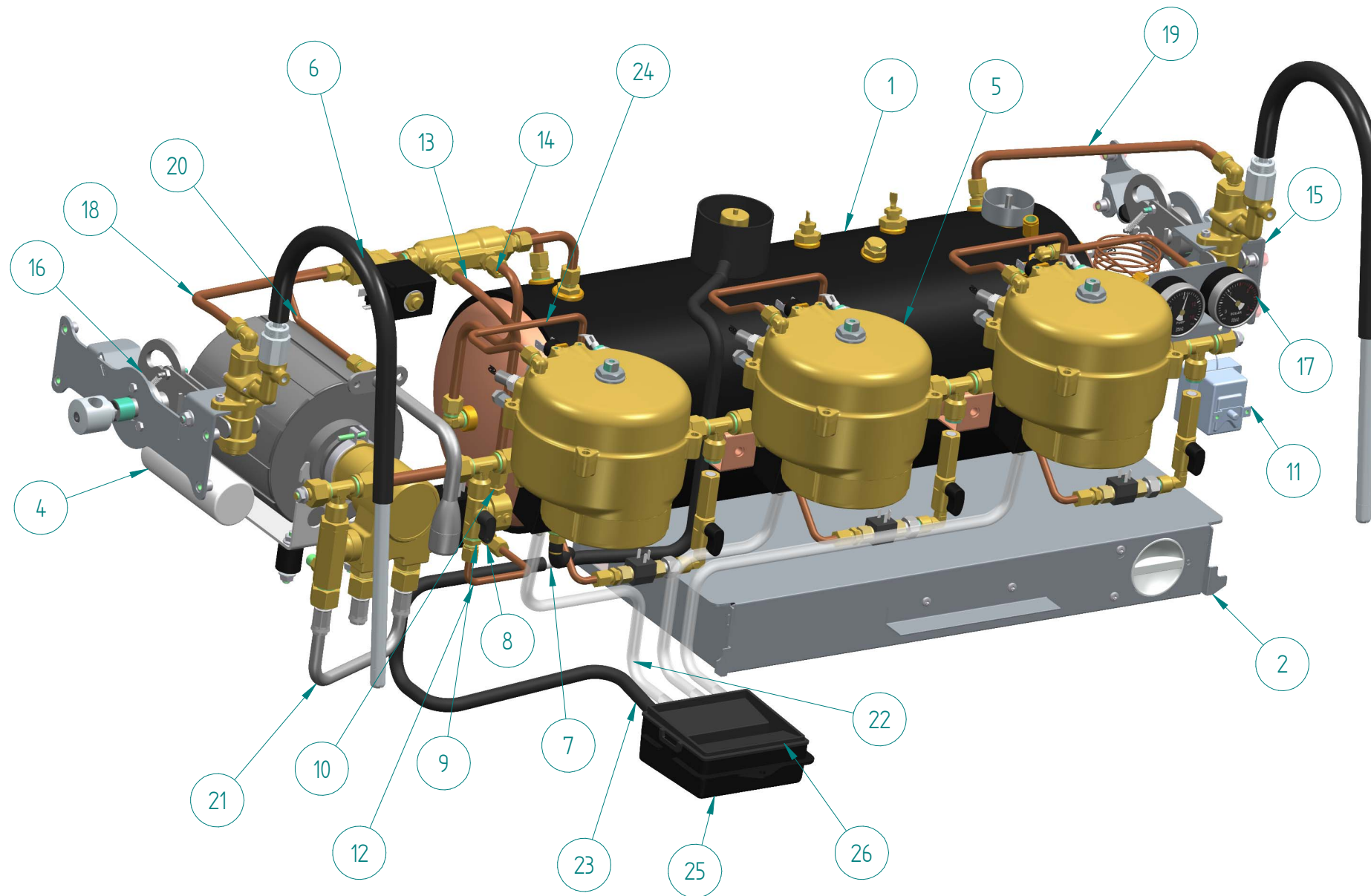
DESCRIPTION	HYDRAULIC SYSTEM
ASSEMBLY CODE	

REV	01
EMISSION DATE	MARCH 21

NOTE:	* ALTERNATIVE TO THE REPRESENTED COMPONENT

SHEET	4
-------	---

CLASSIC VERSION



ITEM	CODE	DESCRIPTION	NOTE
1	A-MC-4101A	COMPLETE BOILER 13 L	See sheet 08
1 a	A-MC-4100A	COMPLETE BOILER 7 L	See sheet 08
2	A-MC-4206	ELECTRICAL SYSTEM SET 3 GR CLASSIC	See sheet 16
2 a	A-MC-4205	ELECTRICAL SYSTEM SET 2 GR CLASSIC	See sheet 16
3 a	A-MC-4118	COLLECTOR 3GR	See sheet 10
3*	A-MC-4119	COMPLETE MANIFOLD 3GR CL	See sheet 10
4	A-MC-0024	3-4 G COMPLETE MOTOR PUMP	See sheet 06
5	A-MC-4102	ASSEMBLED GROUPHEAD	See sheet 14
6	A-MC-4106	HOT WATER GROUP	See sheet 07
7	B-00-0188	PLASTIC T-COUPLING D10	
8	B-00-0130A	L-COUPLING 237 D6 1/8"	
9	B-00-0445	SOLENOID VALVE 2-WAY+RF 24V CC	
10	B-00-0101A	STRAIGHT COUPL 1/8" D8 CW510L	
11	B-00-0023	SAFETY THERMOSTAT 3F 25A	
12	B-MC-4120	MANIFOLD - EVC PIPE	
13	B-MC-4122	EVC - EXCHANGER PIPE D8	
14	B-MC-4123	EXCHANGER-BOILER PIPE D8	
15*	A-MC-4111A	COMPLETE STEAM TAP RIGHT	See sheet 13
16	A-MC-4112A	COMPLETE STEAM TAP LEFT	See sheet 13
17	A-MC-4109	PRESSURE GAUGE ASSEMBLY	See sheet 12
18	B-MC-4127A	STEAM PIPE LEFT D8	
19	B-MC-4126A	STEAM PIPE RIGHT D8	
20	B-MC-4125	EV - THE PIPE D6	
21	B-00-0360	FLEX PIPE 3/8" L22,5	
22	B-00-0325	TRANSPARENT SILICONE PIPE 6x10	
23	B-00-0084	BLACK SIL.PIPE SH 60 S.ø8 x 12	
24	B-MC-4136	CV - GROUP PIPE D6	
25	B-MC-4100A	DRAIN BOX	
26	B-MC-4101A	DRAIN BOX COVER	
27**	B-MC-4109	UPPER GROUP INSULATION	
28**	B-MC-4110	LOWER GROUP INSULATION	
29**	B-MC-0055	GIGLEUR 0.6	

DALLA CORTE
SPARE PARTS CATALOGUE

DESCRIPTION
HYDRAULIC SYSTEM

ASSEMBLY CODE

REV
01

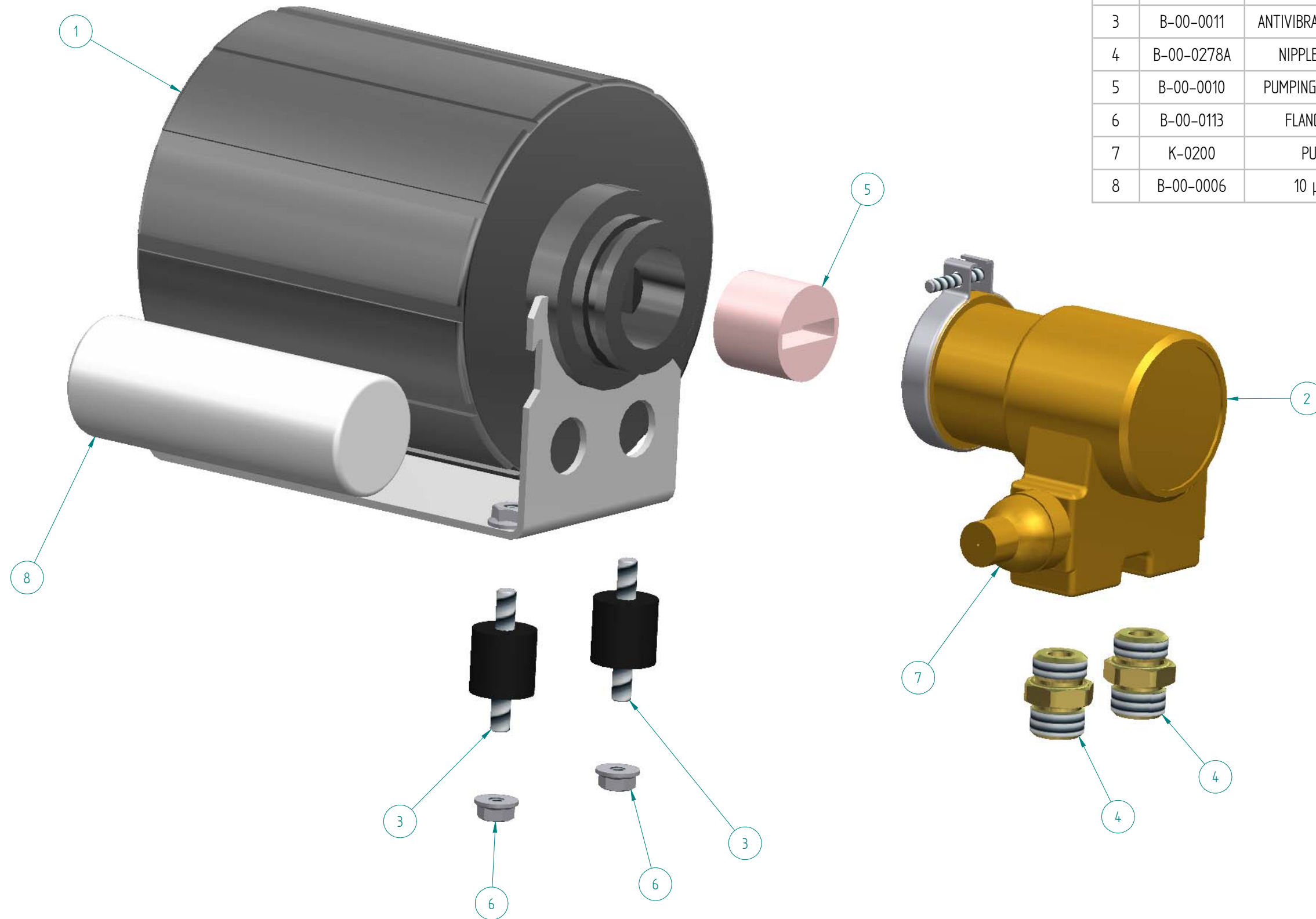
EMISSION DATE
MARCH 21

NOTE:

* ALTERNATIVE TO THE REPRESENTED COMPONENT

SHEET
5

ITEM	CODE	DESCRIPTION	NOTE
	A-MC-0024	MOTOR CLAMP-RING PUMP 165W	
1	B-00-0208	MOTOR 165 W 230 V50/60HZ CL. F	
2	B-00-0009	PUMPING UNIT 100 L.	
3	B-00-0011	ANTIVIBRATION 20X20 M6X10 40SH	
4	B-00-0278A	NIPPLE3/8" FOR PUMPING EL.	
5	B-00-0010	PUMPING UNIT COUPLING - NYLON	
6	B-00-0113	FLANGED NUT M6 DIN6923	
7	K-0200	PUMPING BYPASS KIT	
8	B-00-0006	10 μ F 450V CONDENSER	



DALLA CORTE
SPARE PARTS CATALOGUE

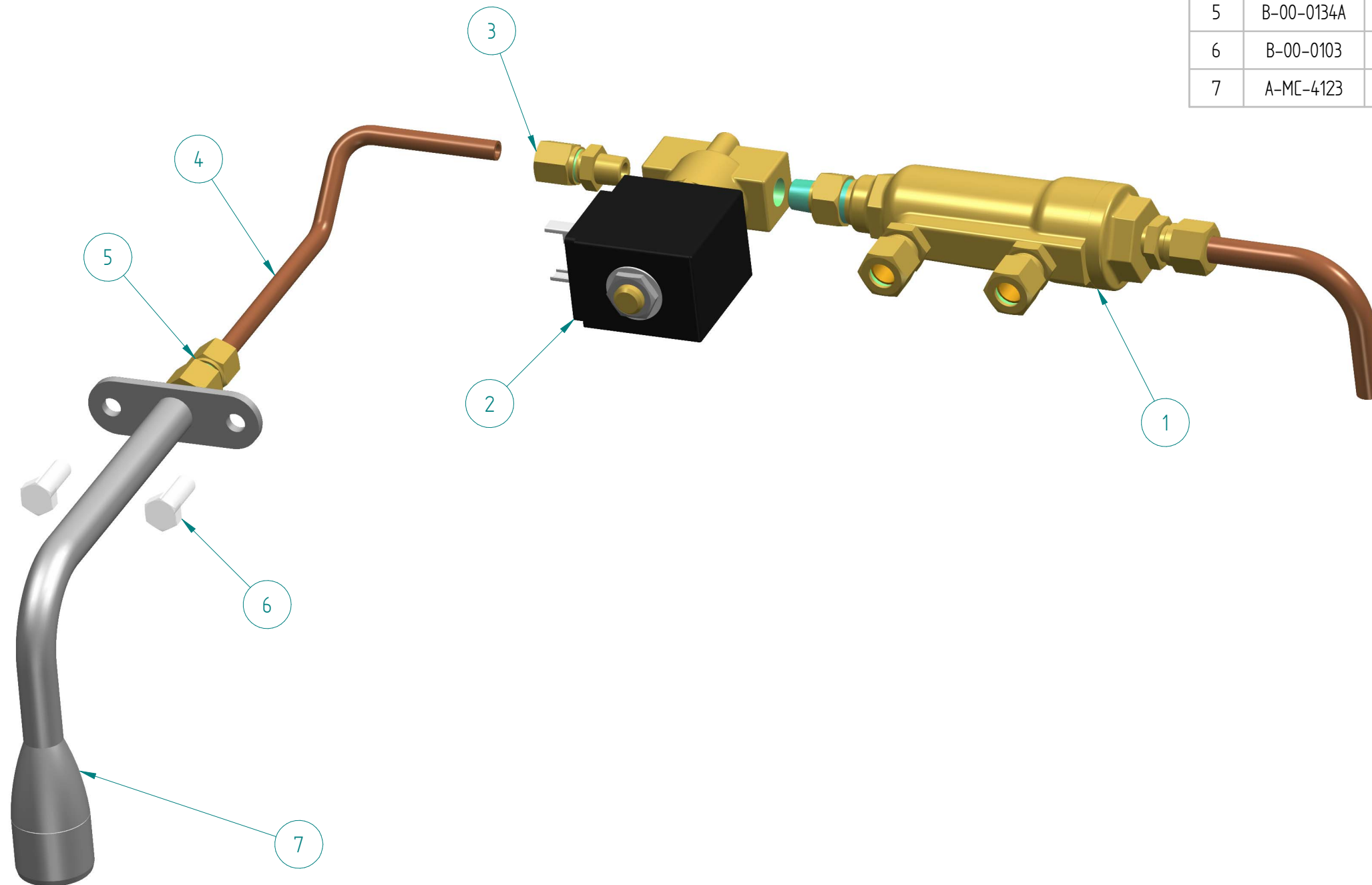
DESCRIPTION
COMPLETE MOTOR PUMP
ASSEMBLY CODE
A-MC-0024

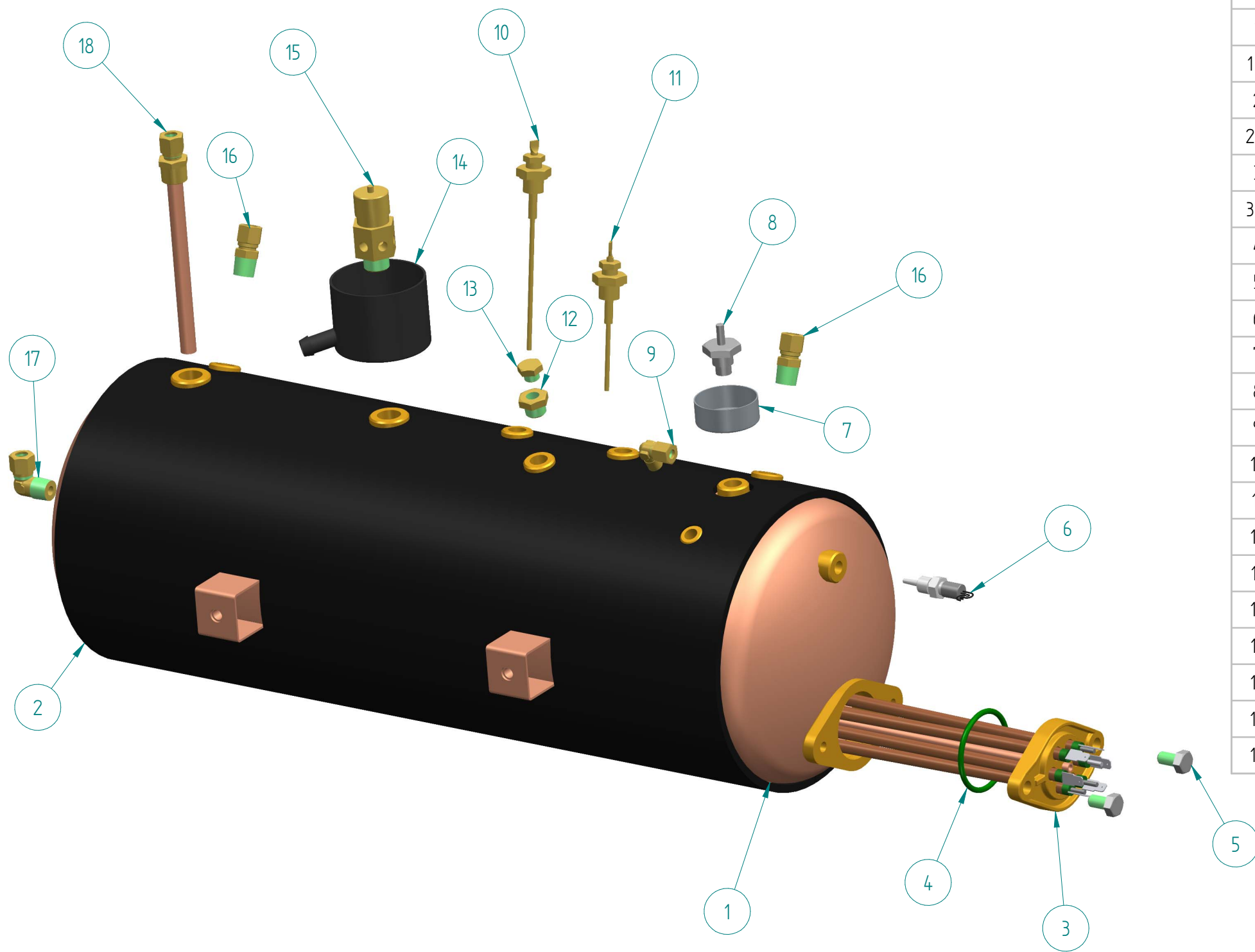
REV
01
EMISSION DATE
MARCH 21

NOTE:
* ALTERNATIVE TO THE REPRESENTED COMPONENT

SHEET
6

ITEM	CODE	DESCRIPTION	NOTE
	A-MC-4106	HOT WATER GROUP	
1	A-MC-4107	COMPLETE EXCHANGER	See sheet 11
2	B-00-0446	SOLENOID VALVE 2V 24V CC (TEA)	
3	B-00-0012A	STRAIGHT COUPL. 1/8" D6 CW510L	
4	B-MC-4125	EV - THE PIPE D6	TO BE ORDERED SEPARATELY
5	B-00-0134A	STRAIGHT COUPL. 234 6 1/8"	TO BE ORDERED SEPARATELY
6	B-00-0103	SCREW TE 8.8 M6x16 DIN933	TO BE ORDERED SEPARATELY
7	A-MC-4123	WATER LAUNCH UCT	TO BE ORDERED SEPARATELY





ITEM	CODE	DESCRIPTION	NOTE
	A-MC-4101A	COMPLETE BOILER 13 L	
	A-MC-4100A	COMPLETE BOILER 7 L	
1	B-MC-4103	BOILER 13 L	
1 a	B-MC-4102	BOILER 7 L	
2	B-MC-4115	BOILER INSULATION 13 LT	
2 a	B-MC-4114	BOILER INSULATION 7 LT	
3	B-MC-0144	BOILER RESISTANCE 3500W-230V	
3 a	B-MC-0029	BOILER RESISTANCE 2400W-230V	
4	B-00-0039	OR 150 46,04x3,53	
5	B-00-0112	SCREW TE A2 M8X20 DIN933	
6	B-MC-1132	TEMPERATURE PROBE PT1000 1/8"	
7	B-MC-0209	DRAIN BOX VACUUM VALVE	
8	B-MC-0047	VACUUM VALVE 1/4"	
9	B-00-0130A	L-COUPLING 237 D6 1/8"	
10	B-MC-0049A	LEVEL PROBE L135	
11	B-MC-0158A	LEVEL PROBE L95	
12	B-00-0171A	REDUCTION MF 1/4"- 1/8"	
13	B-00-0246A	PLUG 1/8" M	
14	B-MC-0208	SAFETY VALVE D 17 DRAIN BOX	
15	B-MC-0048	SAFETY VALVE 3/8" 1.5 BAR	
16	B-00-0015A	STRAIGHT COUPLING 1/4" D8	
17	B-00-0177A	L-COUPLING 1/4" D8	
18	B-MC-0070	COMPLETE SUCTION PIPE	

DALLA CORTE
SPARE PARTS CATALOGUE

DESCRIPTION
COMPLETE BOILER

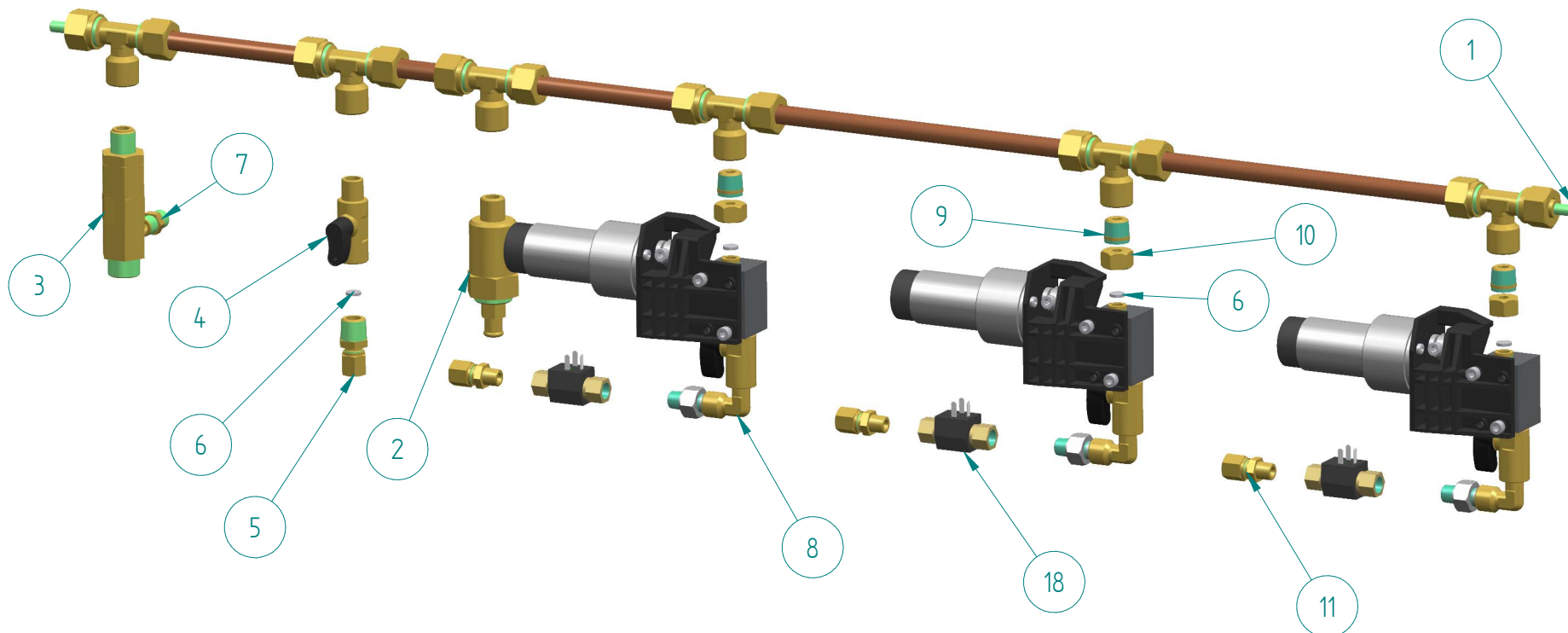
ASSEMBLY CODE
A-MC-4100A / A-MC-4101A

REV
01

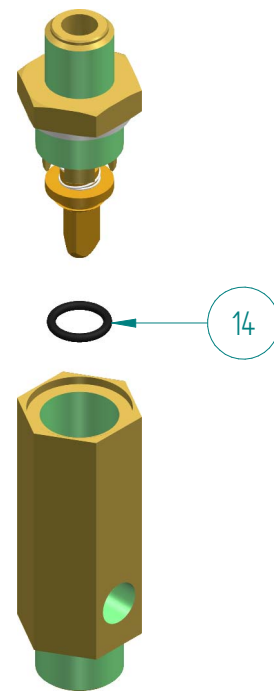
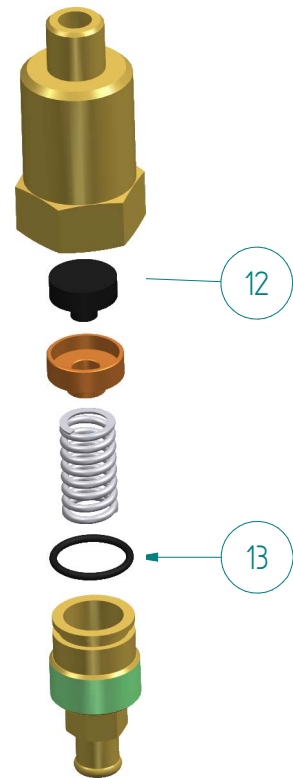
EMISSION DATE
MARCH 21

NOTE:
* ALTERNATIVE TO THE REPRESENTED COMPONENT

SHEET
8



ITEM	CODE	DESCRIPTION	NOTE
	A-MC-4105	COMPLETE MANIFOLD 3GR	
	A-MC-4104	COMPLETE MANIFOLD 2GR	
1	A-MC-4115	MANIFOLD 3GR	
1 a	A-MC-4114	MANIFOLD 2GR	
2	B-MC-0120A	COMPLETE EXPANSION VALVE 1/4"	
3	B-MC-1146	COMPLETE CHECK-VALVE 3/8-1/4	
4	B-00-0022A	BALL TAP 1/4"	
5	B-00-0013A	STRAIGHT COUPL. 1/4" D6	
6	B-MC-0056	INOX FILTER D8 x 2	
7	B-00-0179A	CONICAL NIPPLE 1/8" MM	
8	A-MC-4116	COMPLETE FLOW REGULATOR	
9	B-00-0462	COUPLING 3 PIECES 1/8" - 1/4"	
10	B-00-0464	COUPLING 3 PIECES 1/8" - 1/4"	
11	B-00-0012A	STRAIGHT COUPL. 1/8" D6 CW510L	TO BE ORDERED SEPARATELY
12	B-MC-0123	GASKET D15	
13	B-00-0038	OR FOR EXP. VALVE REGISTER	
14	B-00-0037	OR VITON FOR CHECK VALVE	
18	B-00-0290	FLOWMETER D 1,2	TO BE ORDERED SEPARATELY



DALLA CORTE
SPARE PARTS CATALOGUE

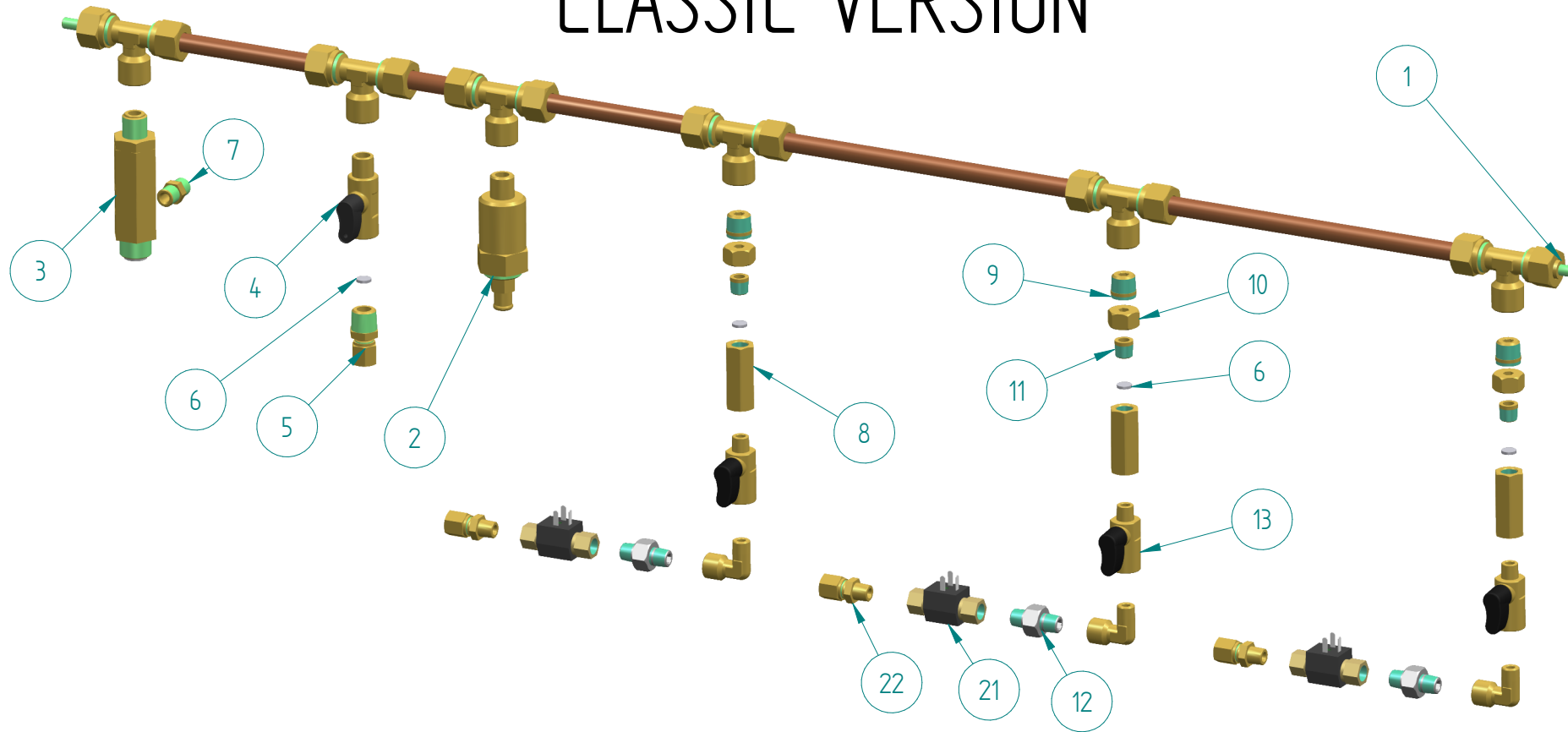
DESCRIPTION
COMPLETE MANIFOLD
ASSEMBLY CODE
A-MC-4104 / A-MC-4105

REV
01
EMISSION DATE
MARCH 21

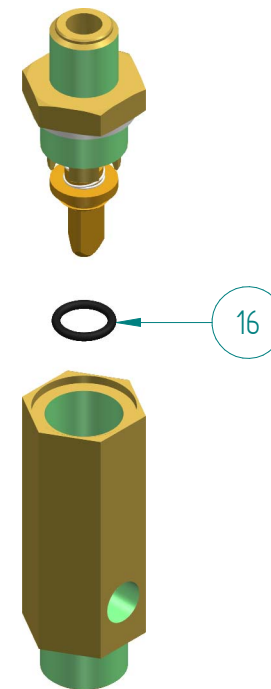
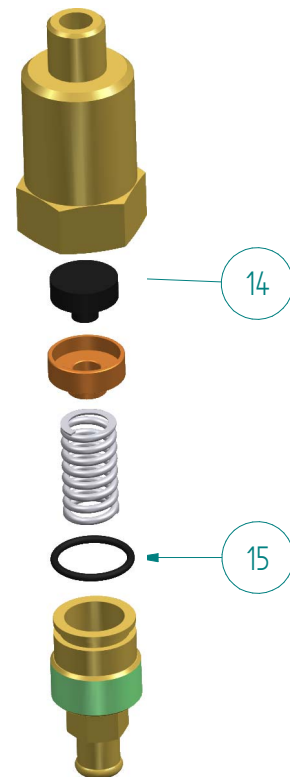
NOTE:
* ALTERNATIVE TO THE REPRESENTED COMPONENT

SHEET
9

CLASSIC VERSION



ITEM	CODE	DESCRIPTION	NOTE
	A-MC-4119	COMPLETE MANIFOLD 3GR CL	
	A-MC-4118	COMPLETE MANIFOLD 2GR CL	
1	A-MC-4115	MANIFOLD 3GR	
1 a	A-MC-4114	MANIFOLD 2GR	
2	B-MC-0120A	COMPLETE EXPANSION VALVE 1/4"	
3	B-MC-1146	COMPLETE CHECK-VALVE 3/8-1/4	
4	B-00-0022A	BALL TAP 1/4"	
5	B-00-0013A	STRAIGHT COUPL. 1/4" D6	
6	B-MC-0056	INOX FILTER D8 x 2	
7	B-00-0179A	CONICAL NIPPLE 1/8" MM	
8	B-MC-4130	HEXAGONAL COUPLING 1/8" FF	
9	B-00-0462	COUPLING 3 PIECES 1/8" - 1/4"	
10	B-00-0464	COUPLING 3 PIECES 1/8" - 1/4"	
11	B-00-0463	COUPLING 3 PIECES 1/8" - 1/4"	
12	B-00-0436	COUPLING 3 PIECES 1/8" - 1/4"	
13	B-00-0435	BALL TAP 1/8" MF	
14	B-MC-0123	GASKET D15	
15	B-00-0038	OR FOR EXP. VALVE REGISTER	
16	B-00-0037	OR VITON FOR CHECK VALVE	
21	B-00-0290	FLOWMETER D 1,2	TO BE ORDERED SEPARATELY
22	B-00-0012A	STRAIGHT COUPL. 1/8" D6 CW510L	TO BE ORDERED SEPARATELY



DALLA CORTE
SPARE PARTS CATALOGUE

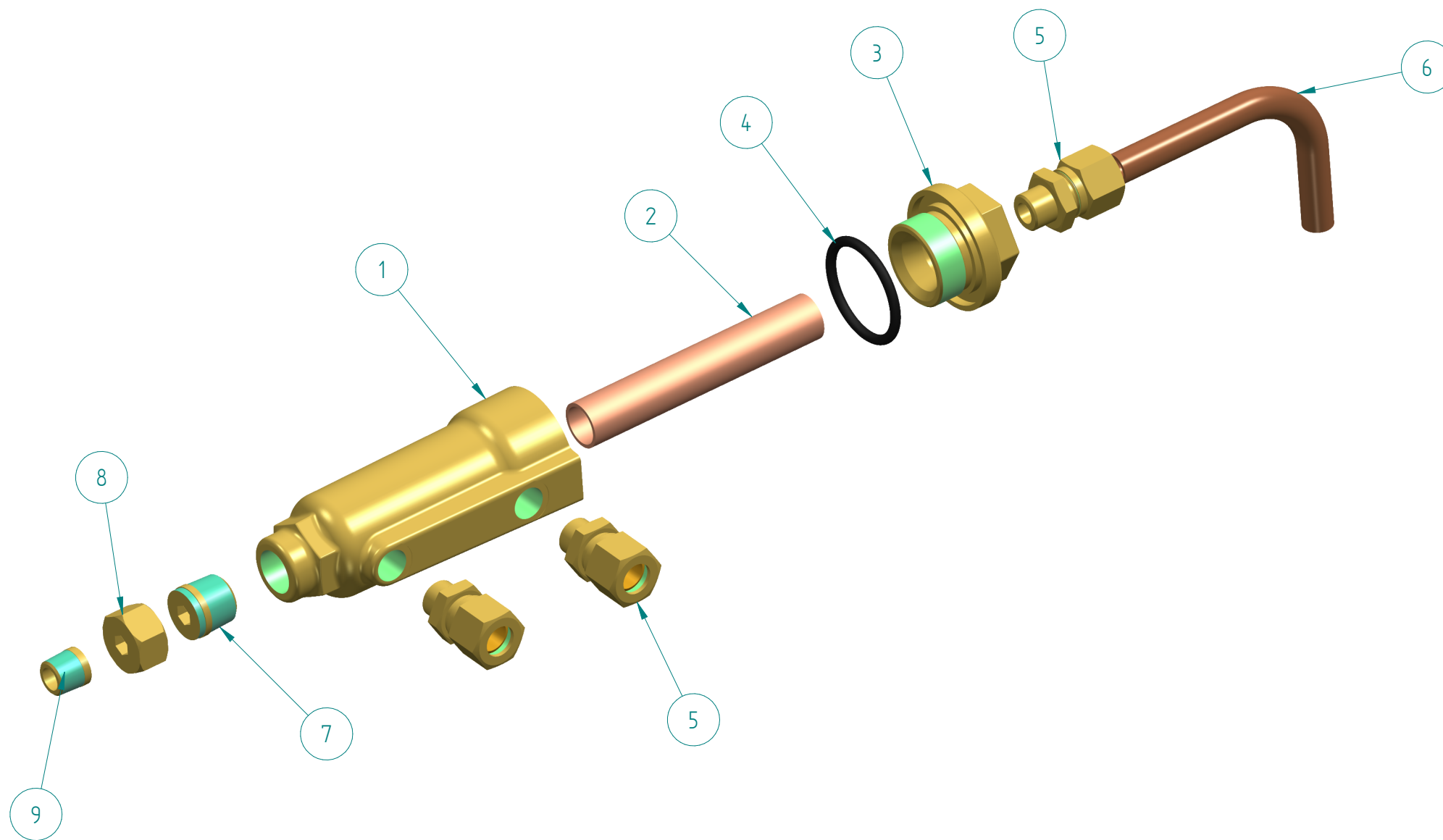
DESCRIPTION
COMPLETE MANIFOLD
ASSEMBLY CODE
A-MC-4119 / A-MC-4118

REV
01
EMISSION DATE
MARCH 21

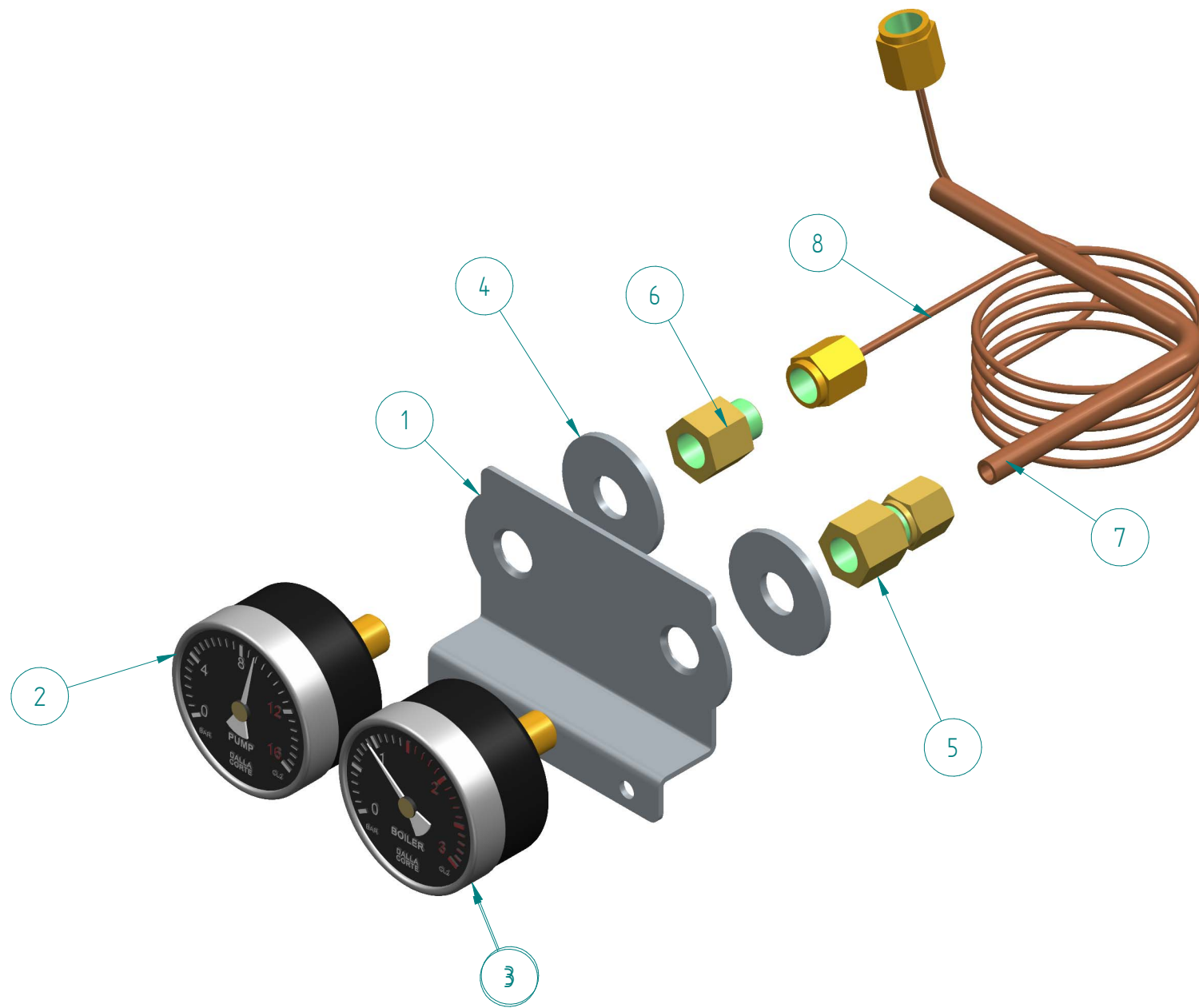
NOTE:
* ALTERNATIVE TO THE REPRESENTED COMPONENT

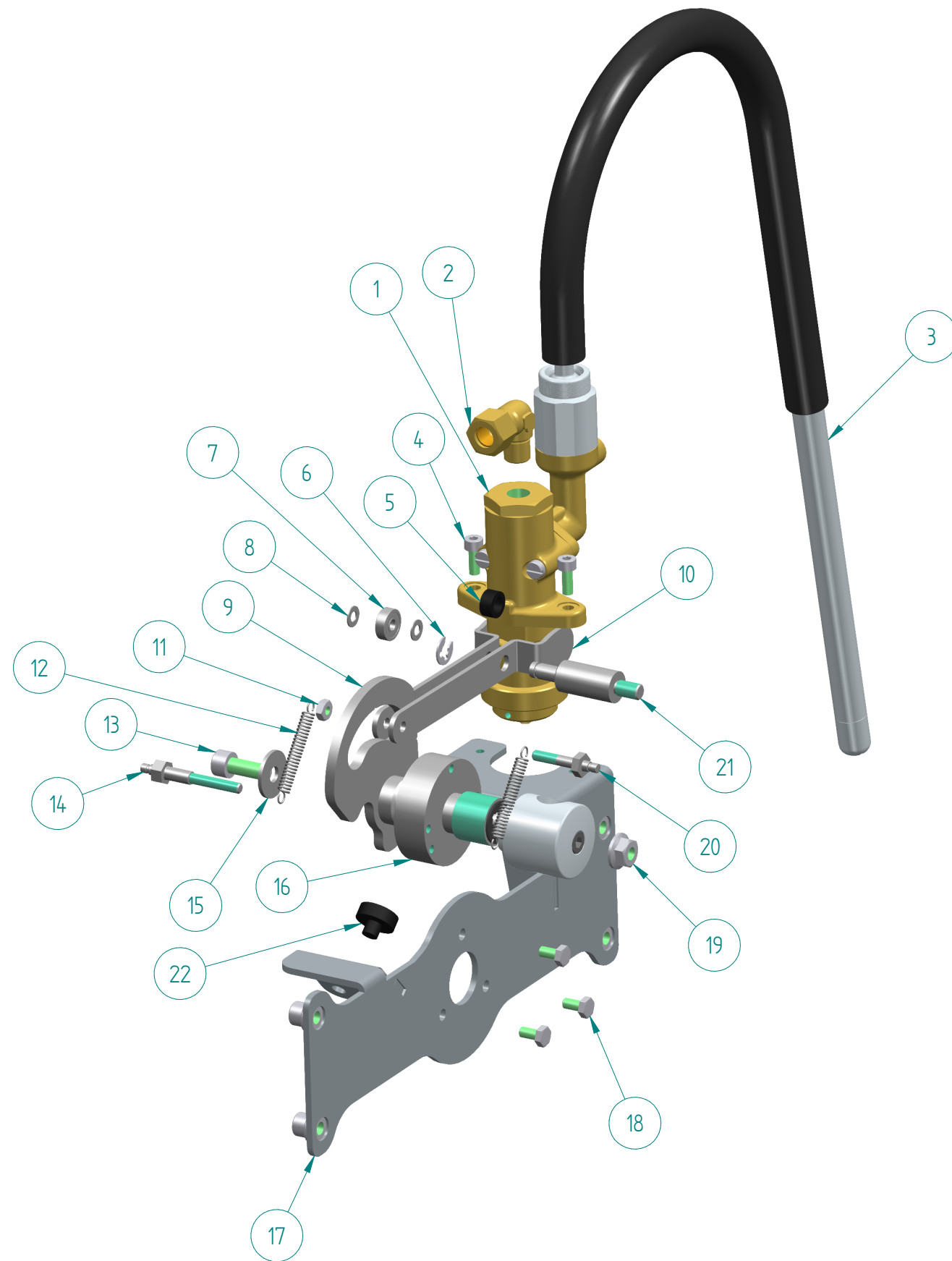
SHEET
10

ITEM	CODE	DESCRIPTION	NOTE
	A-MC-4107	COMPLETE EXCHANGER	
1	B-MC-0079	EXCHANGER BODY	
2	B-MC-0081	EXCHANGER INT. PIPE	
3	B-MC-0080	EXCHANGER PLUG	
4	B-00-0047	OR 3093/BS 119 FPM-FDA/70.vd	
5	B-00-0101A	STRAIGHT COUPL. 1/8" D8 CW510L	
6	B-MC-4124	BOILER-EXCHANGER PIPE D8	
7	B-00-0462	COUPLING 3 PIECES 1/8" - 1/4"	
8	B-00-0464	COUPLING 3 PIECES 1/8" - 1/4"	
9	B-00-0463	COUPLING 3 PIECES 1/8" - 1/4"	

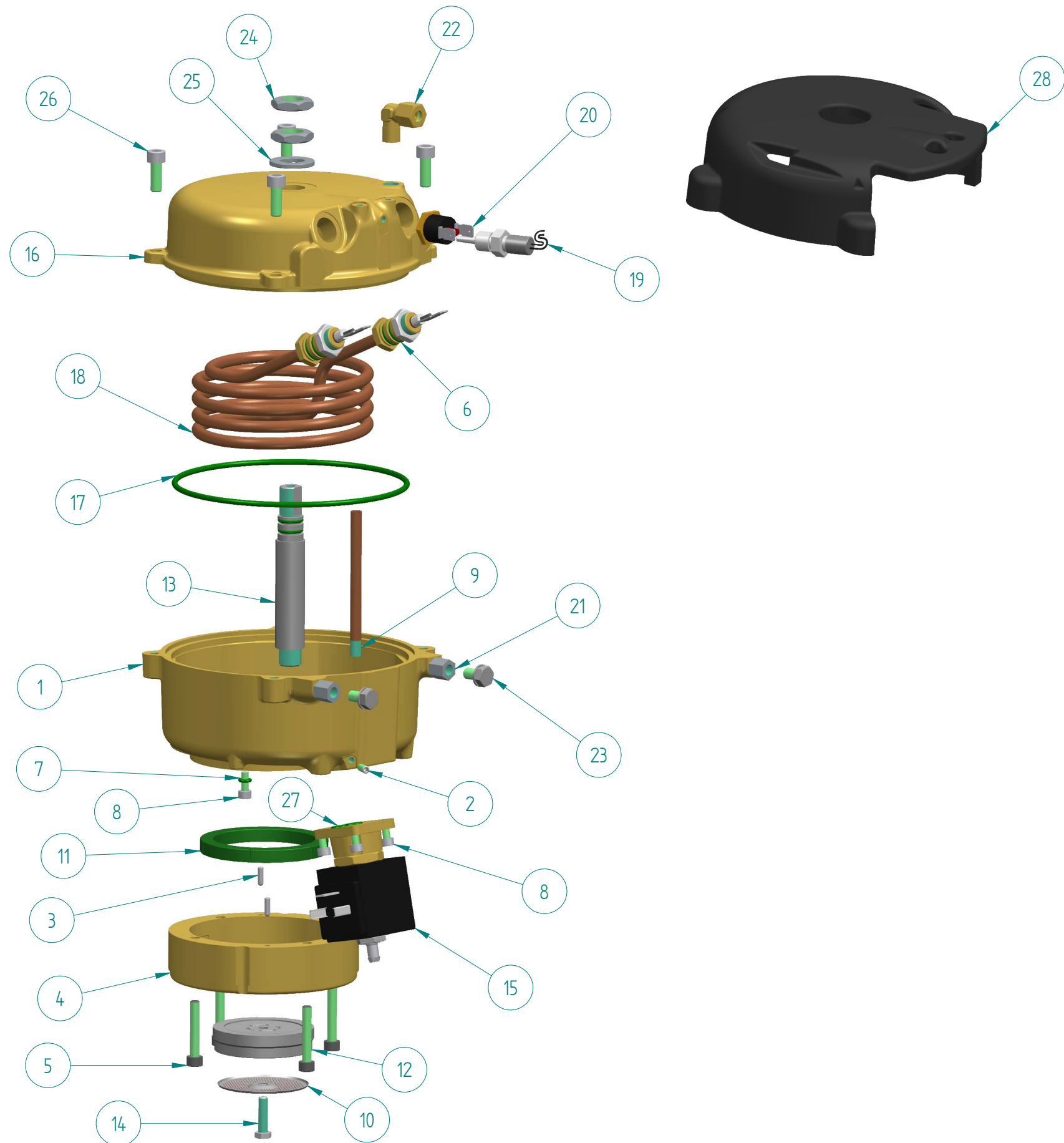


ITEM	CODE	DESCRIPTION	NOTE
	A-MC-4109	PRESSURE GAUGE ASSEMBLY	
1	B-MC-4020	PRESS.GAUGE BRACKET	
2	B-MC-4112	FLANGED MANOMETER PUMP	
3	B-MC-4111	BOILER PRESSURE GAUGE	
4	B-00-0240	WASHER FE ZN D. 10x 30	
5	B-00-0134A	STRAIGHT COUPL234 6 1/8"	
6	B-00-0187A	EXTENSION 1/8 MF CW510L	
7	B-MC-4128	BOILER PRESS. GAUGE PIPE D6	
8	B-MC-4129	PRESSURE GAUGE CAPILLARY TUBE	





ITEM	CODE	DESCRIPTION	NOTE
	A-MC-4112A	COMPLETE STEAM TAP LEFT	
	A-MC-4111A	COMPLETE STEAM TAP RIGHT	
1	A-MC-4121	FLANGED STEAM TAP ASSEMBLY	
2	B-00-0425	CONNECTION 90° 1/8" D8	
3	A-MC-4103A	STEAM PIPE U CAN TOUCH COVERED	
4	B-00-0110	SCREW TCEI A2 M4x10 DIN912	
5	B-00-0441	SPACER 10x6,2x5	
6	B-00-0161	RETAINING RING D5	
7	B-00-0439	BALL BEARING 604-2Z	
8	B-00-0440	WASHER 4x8x0.5	
9	B-MC-4411A	STEAM TAP OPERATION LEVER	
10	B-MC-4434	OPERATION LEVER RETURN	
11	B-00-0121	NUT M 4 UNI 5588 ZN	
12	B-00-0361	STEAM LEVER MOVING SPRING	
13	B-00-0109	SCREW TCEI A2 M6x16 DIN912	
14	B-MC-4409	REAR PANEL PIN	
15	B-00-0243	WASHER A2 DIN 9021 M6	
16	A-MC-4400A	STEAM TAP MECHANISM	
17	B-MC-4009A	LEFT STEAM TAP LEVER SUPPORT	
17 a	B-MC-4022A	RIGHT STEAM TAP LEVER SUPPORT	
18	B-00-0102	SCREW TE 8.8 M4x8 DIN933	
19	B-00-0113	FLANGED NUT M6 DIN6923	
20	B-MC-4406	BALL BEARING PIN	
21	B-MC-4405	HUB STEAM TAP PIN	
22	B-MC-0125	GASKET D15	



ITEM	CODE	DESCRIPTION	NOTE
	A-MC-4102	ASSEMBLED GROUPHEAD	
1	B-MC-4106A	GROUP BODY	
2	B-00-0197	GRUB SCREW M 4 x 10 DIN 913	
3	B-00-0202	CYLINDRICAL PIN D3x10	
4	B-MC-4104	PORTAFILTER HOLDER RING	
5	B-00-0429	SCREW TCEI A2 M5x30 DIN912	
6	B-00-0423	OR 11,11 x 1,78 FPM-FDA/70.vd	
7	B-00-0100	OR2015BS007 3.68x1.78TEM.PROBE	
8	B-00-0110	SCREW TCEI A2 M4x10 DIN912	
9	B-MC-4108	GROUP INNER PIPE	
10	B-MC-0039A	NANOTECH. TREATMENT SHOWER	
11	B-MC-0128	GASKET H7 70/75 SH	
11a	B-MC-0468 *	FILTER H. GASKET H7.7 70/75SH	
11b	B-MC-0269 *	GASKET DEPTH TH. 0.5	
11c	B-MC-0470 *	GASKET H6.5 68X54 W/NOTCHES	
11d	B-MC-0714 *	GASKET H7 85 SH HNBR BLACK	
12	B-MC-1617	SHOWER HOLDER H12.5 INOX	
12a	B-MC-1628 *	SHOWER HOLDER H14 INOX	TO BE ORDERED SEPARATELY
12b	B-MC-1624 *	SHOWER HOLDER H10 INOX	TO BE ORDERED SEPARATELY
13	B-MC-4107	CENTRAL PIN	
14	B-00-0054	SCREW TE A2 M5X20 DIN933	
14a	B-00-0205 *	SCREW TE A2 M5X16 DIN933	FOR SHOWER HOLDER H10
15	B-00-0428	SOLENOID VALVE 3-WAY 24V DC	
16	B-MC-4105A	GROUP TOP COVER	
17	B-00-0452	OR M 123x3 FPM-FDA/70	
18	B-MC-4202	GROUP HEATING ELEMENT 1000W	
19	B-MC-1132	TEMPERATURE PROBE PT1000 1/8"	
20	B-00-0024	SAFETY THERMOSTAT 1F 16A	
21	B-00-0442	HEXAGONAL M/F SUPPORT M6 L 10	
22	B-00-0130A	L-COUPLING 237 D6 1/8"	
23	B-00-0443	SCREW TE A2 M6x10 DIN6921	
24	B-00-0430	THIN NUT ZN M12x1,25 DIN936	
25	B-00-0431	WASHER ZN M12 DIN125	
26	B-00-0109	SCREW TCEI A2 M6x16 DIN912	
27	B-00-0036	OR 105 VITON SOLENOID VALVE GR	
28	B-MC-4109	UPPER GROUP INSULATION	

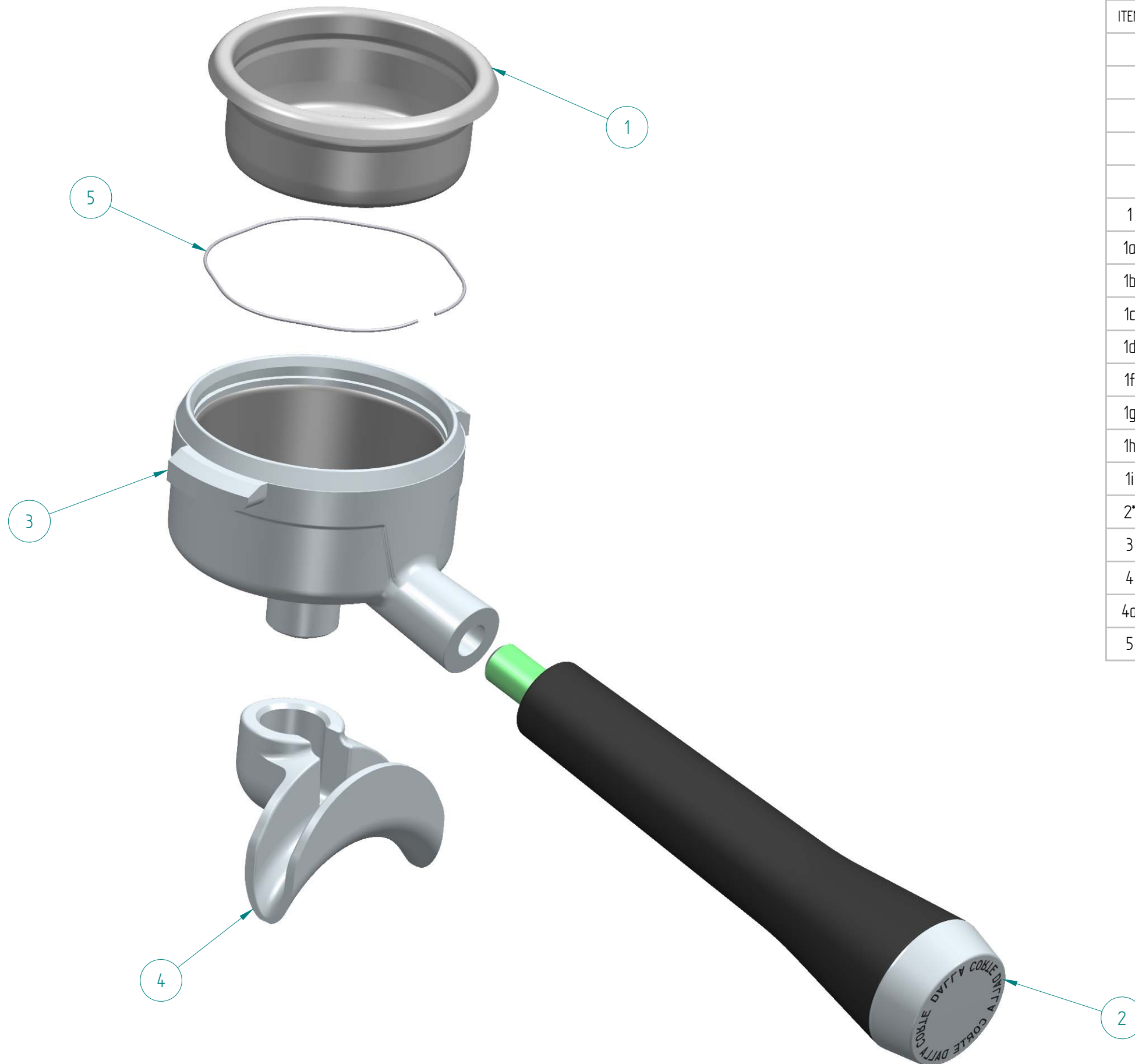
DALLA CORTE
SPARE PARTS CATALOGUE

DESCRIPTION	ASSEMBLED GROUPHEAD
ASSEMBLY CODE	A-MC-4102

REV	01
EMISSION DATE	MARCH 21

NOTE:
* ALTERNATIVE TO THE REPRESENTED COMPONENT

SHEET
14



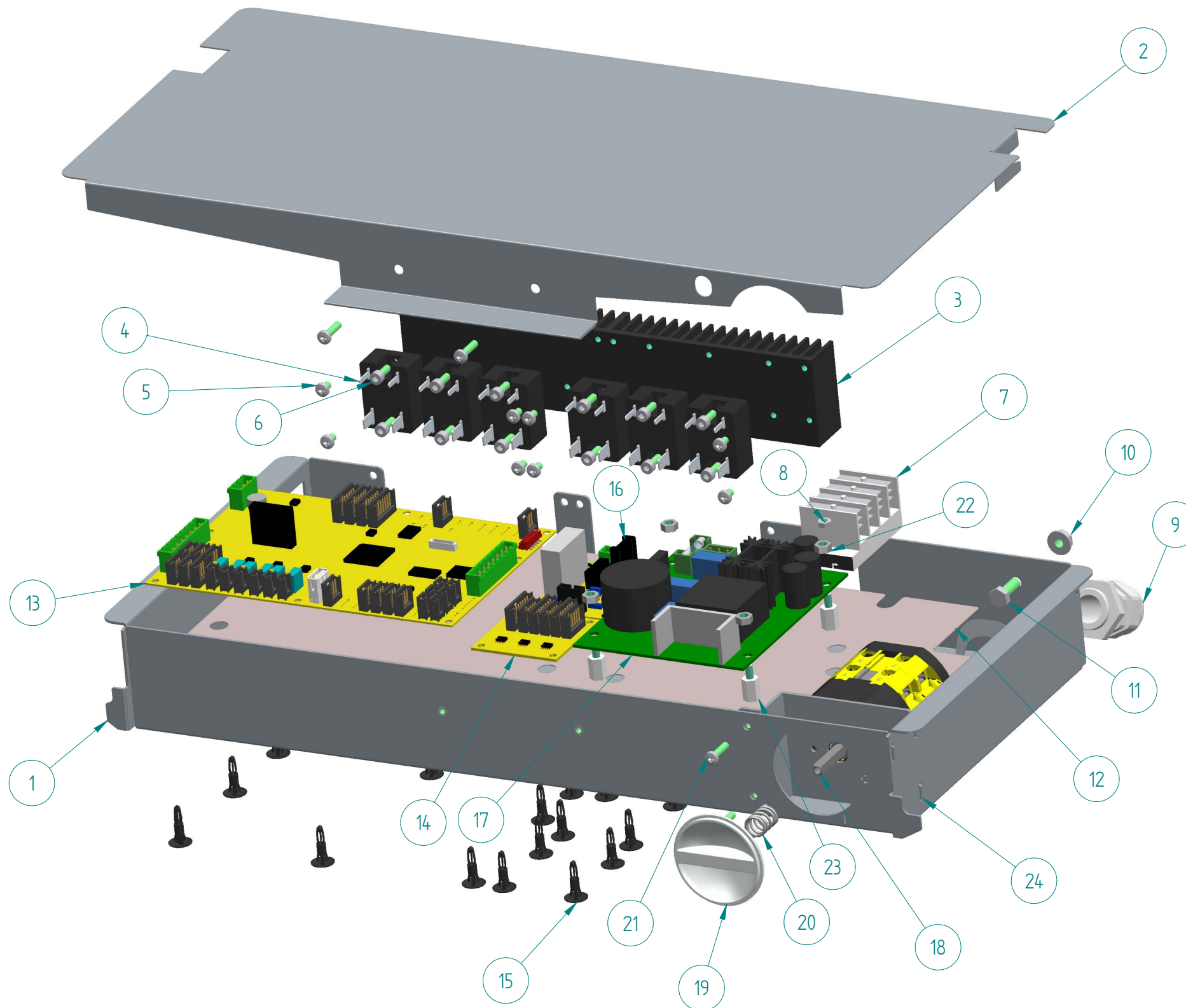
ITEM	CODE	DESCRIPTION	NOTE
	A-PC-0010	COMPLETE 2-CUP PORTAFILTER MY20	
	A-PC-0009	COMPLETE 1-CUP PORTAFILTER	
	A-PC-0011	NAKED PORTAFILTER	
	A-PC-0012	COMPLETE 2-CUPS PORTAFILTER D5	
	A-PC-0013	NAKED PORTAFILTER D58	
1	B-MC-0409	2 CUP FILTER H24,5 (<14gr)	
1a	B-MC-0041B *	2 CUP FILTER H26 (14-15gr)	
1b	B-MC-0394C *	2 CUP FILTER H28 (15-18gr)	
1c	B-MC-0432B *	2 CUP FILTER H32 (21gr-)	
1d	B-MC-0729B *	2 CUP FILTER H30 (18-21gr)	
1f	B-MC-0224 *	BLIND FILTER	
1g	B-MC-0040B *	1 CUP FILTER H25 (7-9gr)	
1h	B-MC-0271B *	1 CUP FILTER H23 (6-7gr)	
1i	B-MC-0686B *	1 CUP FILTER H27 (9-10gr)	
2*	A-PC-0008	COMPLETE 2-CUP PORTAFILTER	
3	A-PC-0007	COATED PORTAFILTER BODY D54	
4	B-MC-0078	CHROMED 2-SHOT SPOUT	
4a	B-MC-0077 *	CHROMED 1-SHOT SPOUT	
5	B-MC-0060	PORTAFILTER SPRING 1,1	

**DALLA
CORTE**
SPARE PARTS CATALOGUE

DESCRIPTION	PORTAFILTER
ASSEMBLY CODE	

REV	01
EMISSION DATE	MARCH 21

NOTE:	* ALTERNATIVE TO THE REPRESENTED COMPONENT



ITEM	CODE	DESCRIPTION	NOTE
	A-MC-4211	ELECTRICAL SYSTEM SET 3 GROUPS	
	A-MC-4204	ELECTRICAL SYSTEM SET 2 GROUPS	
	A-MC-4206	ELECTRICAL SYSTEM SET 3 GROUPS CL	
	A-MC-4205	ELECTRICAL SYSTEM SET 2 GROUPS CL	
1	B-MC-4209	ELECTRIC BOX	
2	B-MC-4214	ELECTRIC BOX COVER	
3	B-MC-4208	STATIC RELAY HEATSINK	
4	B-00-0314	MINA UNIT RELAY	
5	B-00-0111	SCREW TC+ A2 M4x6 DIN7985	
6	B-00-0110	SCREW TCEI A2 M4x10 DIN912	
7	A-MC-0054	FASTON 4-POLE 6.3 TERM. BOARD	
8	B-00-0121	NUT M 4 UNI 5588 ZN	
9	B-00-0001	CABLE GLAND PG16	
10	B-00-0113	FLANGED NUT M6 DIN6923	
11	B-00-0103	SCREW TE 8.8 M6x16 DIN933	
12	B-MC-4216	ELECTRIC BOX INSULATION	
13	B-MC-4210A	MANAGEMENT ELECTRICAL BOARD	
14	B-MC-4222	MOTORS BOARD	NOT AVAILABLE FOR CLASSIC VERSION
15	B-00-0348	PRESS. CONICAL SUPPORT D4	
16	B-MC-4211	DEVICE ELECTRICAL BOARD	
17	B-00-0437	SWITCHING POWER SUPPLY 180W	
18	B-00-0002	SWITCH 4P	
19	B-MC-1077	MAIN SWITCH KNOB	
20	B-00-0370	WASHER M5 DIN125	
21	B-00-0184	SCREW TC+ M4X16 Zn DIN 7985	
22	B-00-0379	NUT M5 DIN439	
23	B-00-0444	HEXAGONAL M/F SUPPORT M5 L 52	
24	B-MC-4215	MAIN SWITCH SUPPORT	
25**	B-MC-4225	ELECTRIC BOX WIRING 2GR	
26**	B-MC-4226	ELECTRIC BOX WIRING 3GR	

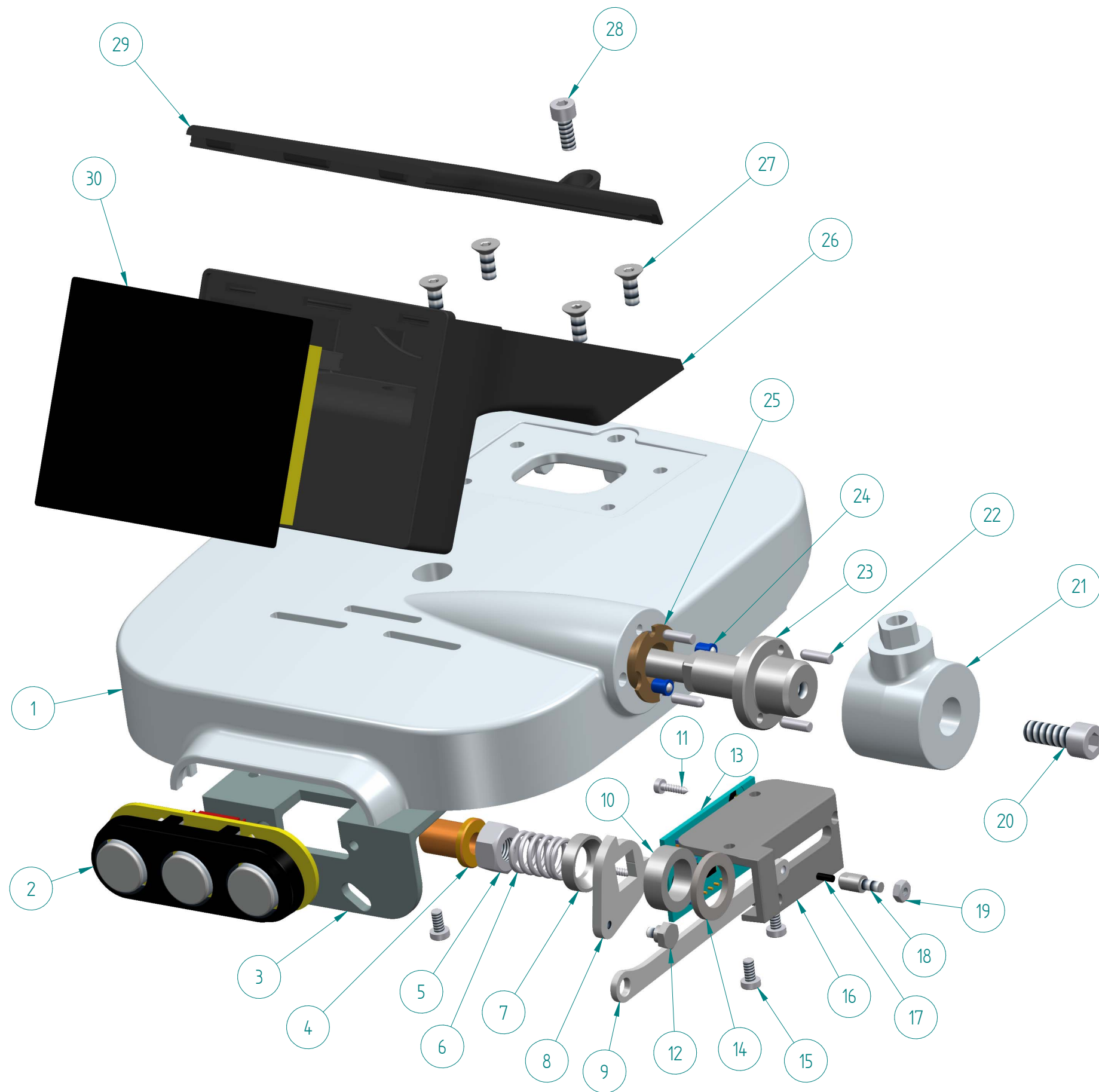
DALLA CORTE
SPARE PARTS CATALOGUE

DESCRIPTION	ELECTRICAL SYSTEM SET
ASSEMBLY CODE	

REV	01
EMISSION DATE	MARCH 21

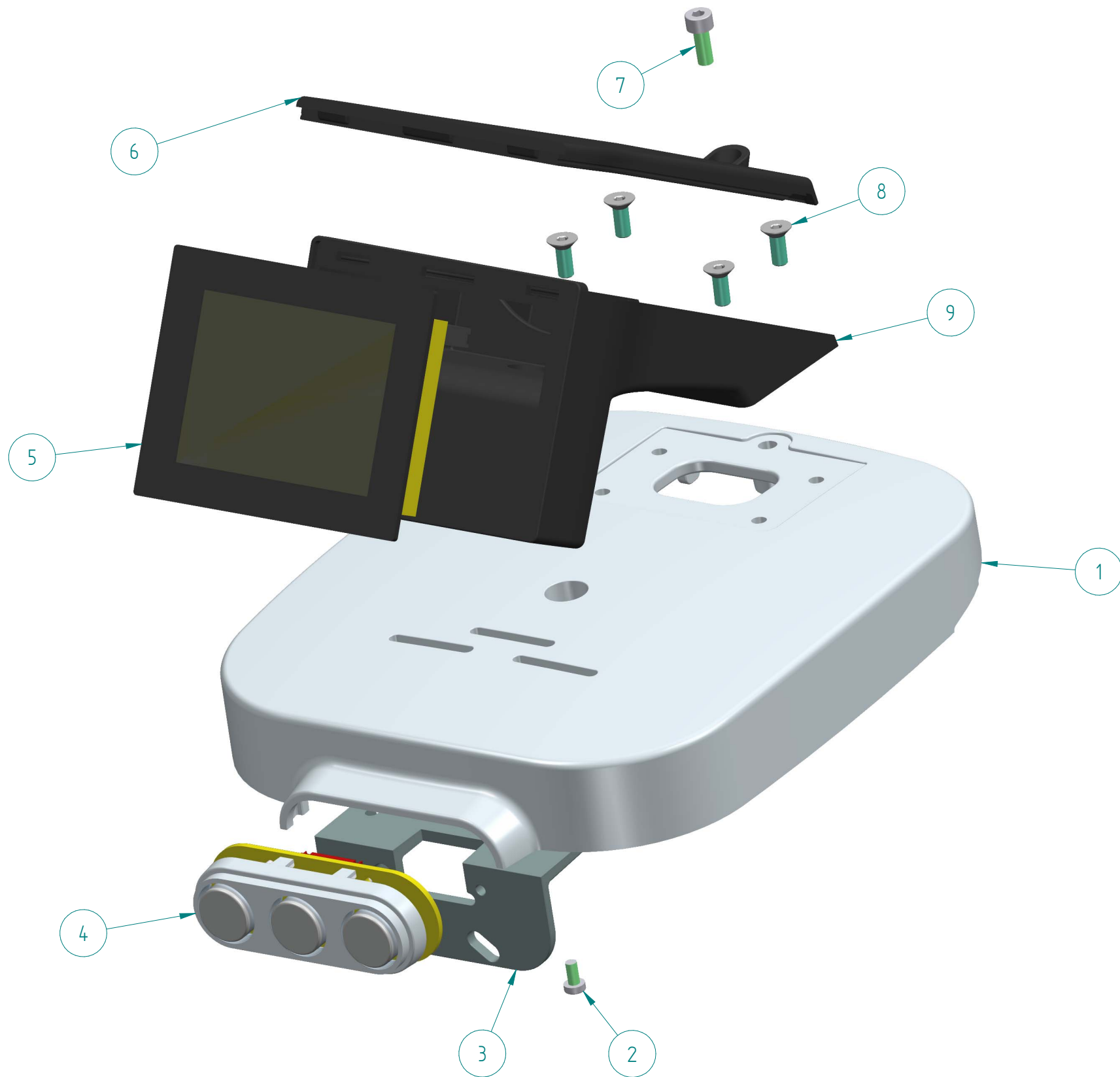
NOTE:
* ALTERNATIVE TO THE REPRESENTED COMPONENT

DALLA CORTE SRL reserves by law the property of the drawing, prohibiting its reproduction or disclosure to third parties or competitors without prior written advice.



ITEM	CODE	DESCRIPTION	NOTE
	A-MC-4209	GROUP COVER ASSEMBLY	
1	B-MC-4312	GROUP COVER TOP	
2	A-MC-4200	COMPLETE KEYBOARD 3 BUTTONS	
3	B-MC-4221	KEYBOARD SUPPORT	
4	B-GR-0033	DC-ONE SINTERED BUSH 6x10x14x2	
5	B-00-0120	NUT M 8 UNI 5588 ZN	
6	B-MC-0103	STEAM PIPE SPRING	
7	B-MC-4429	SPRING SUPPORT RING	
8	B-MC-4414	SELECTION ARM	
9	B-MC-4415	CONTROL SHAFT	
10	B-MC-4427	SELECTION PIN SPACER	
11	B-MC-0124	EXPANSION-VALVE REGISTER	
12	B-MC-4426	BASE ROTATION PIN	
13	B-MC-4213	HALL EFFECT BOARD	
14	B-MC-4424	SELECTION CLUTCH RING	
15	B-00-0182	SCREW TC+ M3x6 DIN7985	
16	B-MC-4416	SELECTION AUCTION GUIDE	
17	B-00-0321	PARYLENE MAGNET Ø1.81x4.5	
18	B-MC-4428	MAGNET HOLDER PIN	
19	B-00-0135	NUT M3 UNI 5588	
20	B-00-0109	SCREW TCEI A2 M6x16 DIN912	
21	B-MC-4358	BUSHING FOR LEVER GROUP	
22	B-00-0202	CYLINDRICAL PIN D3x10	
23	B-MC-4423	SELECTION COMMAND PIN	
24	B-00-0289	PRESSURE SPRING D 4	
25	B-MC-4425	FERRULE 12 16 12	
26	B-MC-4355	DISPLAY SUPPORT	
27	B-00-0294	SCREW TSEI M 4 x 10 A2 DIN 799	
28	B-00-0110	SCREW TCEI A2 M4x10 DIN912	
29	B-MC-4359	GROUP COVER TOP LITE	
30	B-MC-4212	DISPLAY ELECTRICAL BOARD	
31	B-MC-4227 **	GROUP BOARD ASSEMBLY FLEX CABL	
32	B-MC-4228 **	HALL EFFECT BOARD SERIAL CABLE	

VERSIONE CLASSIC



ITEM	CODE	DESCRIPTION	NOTE
	A-MC-4210	GROUP COVER ASSEMBLY CL	
1	B-MC-4359	GROUP COVER TOP LITE	
2	B-00-0182	SCREW TC+ M3x6 DIN7985	
3	B-MC-4221	KEYBOARD SUPPORT	
4	A-MC-4200	COMPLETE KEYBOARD 3 BUTTONS	
5	B-MC-4212	DISPLAY ELECTRICAL BOARD	
6	B-MC-4359	GROUP COVER TOP LITE	
7	B-00-0110	SCREW TCEI A2 M4x10 DIN912	
8	B-00-0294	SCREW TSEI M 4 x 10 A2 DIN 799	
9	B-MC-4355	DISPLAY SUPPORT	
10	B-MC-4227 **	GROUP BOARD ASSEMBLY FLEX CABL	

DALLA CORTE
SPARE PARTS CATALOGUE

DESCRIPTION
GROUP COVER ASSEMBLY CLASSIC

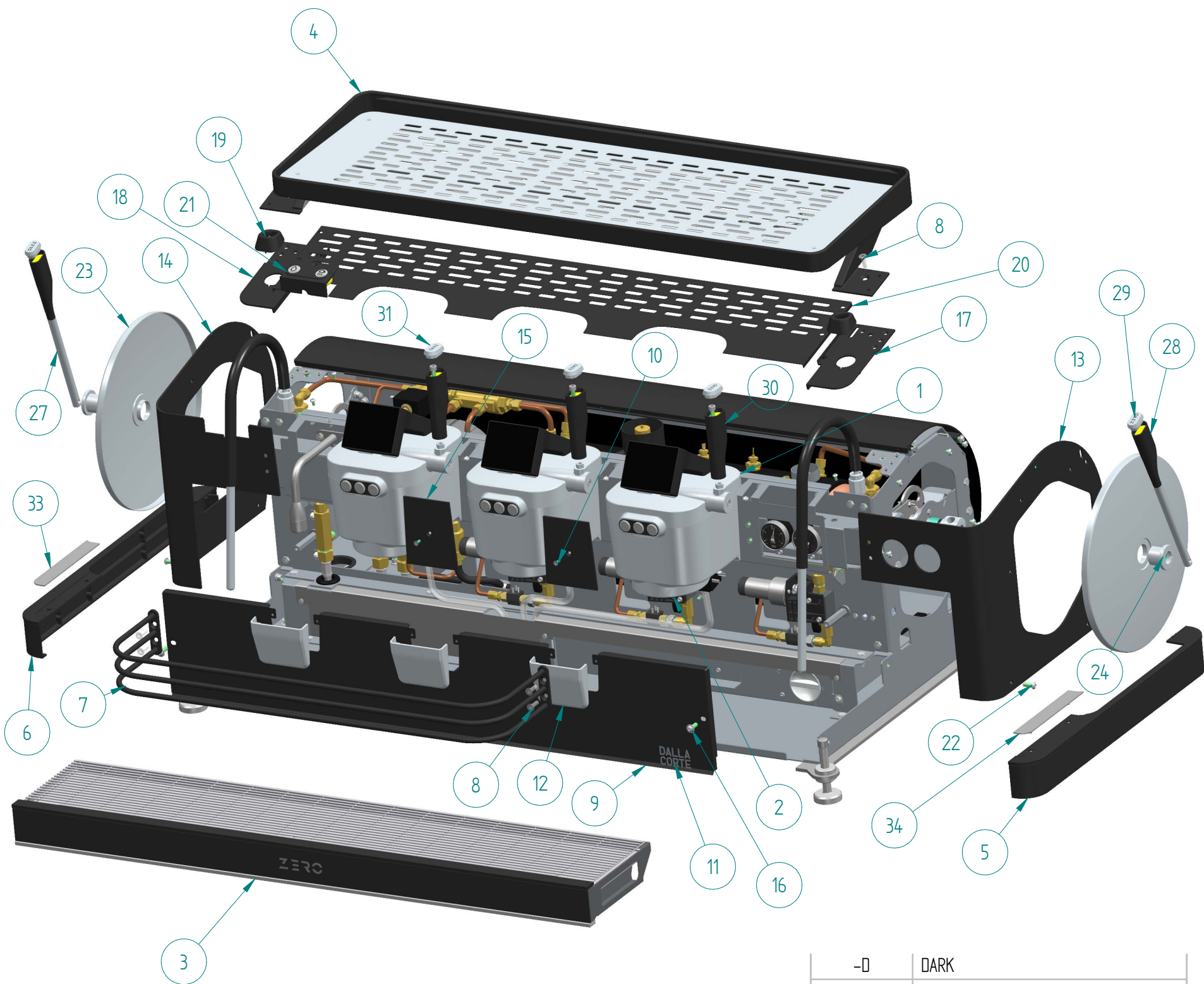
ASSEMBLY CODE
A-MC-4210

REV
01

EMISSION DATE
MARCH 21

NOTE:
* ALTERNATIVE TO THE REPRESENTED COMPONENT

SHEET
18



-D	DARK
-W	WHITE
-NB	NAVY BLUE
-VO	OLIVE GREEN

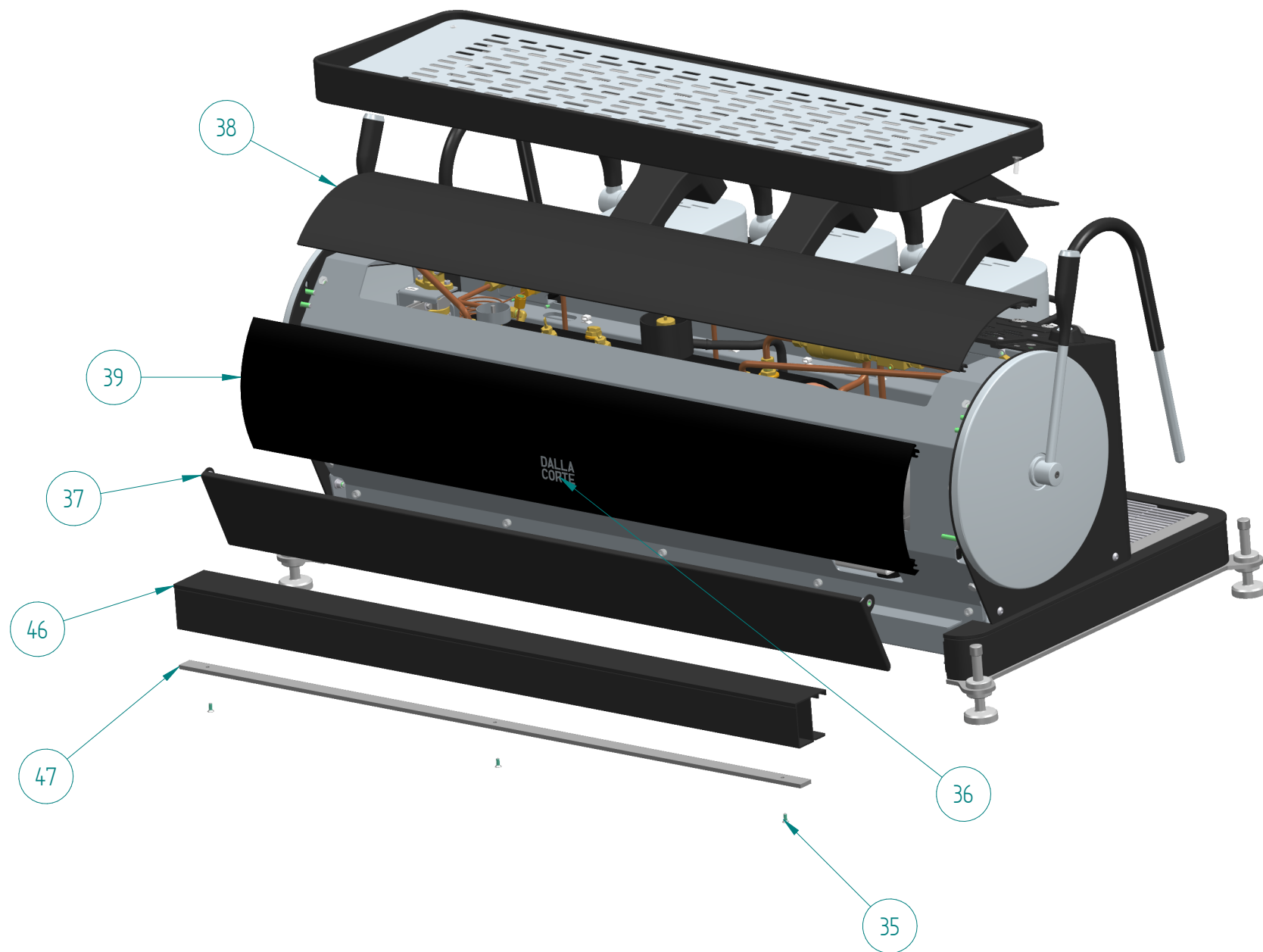
ITEM	CODE	DESCRIPTION	NOTE
1	A-MC-4209	GROUP COVER ASSEMBLY	See sheet 17
1 a	A-MC-4210	GROUP COVER ASSEMBLY CL	See sheet 18
2	B-MC-4313	GROUP COVER LOWER	
3	A-MC-4303...	COMPLETE TRAY 3GR	TO BE COMPLETED WITH THE COLOR CODE
3 a	A-MC-4302...	COMPLETE TRAY 2GR	TO BE COMPLETED WITH THE COLOR CODE
4	A-MC-4301...	CUP WARMER ASSEMBLY 3GR	TO BE COMPLETED WITH THE COLOR CODE
4 a	A-MC-4300...	CUP WARMER ASSEMBLY 2GR	TO BE COMPLETED WITH THE COLOR CODE
5	B-MC-4318A...	RH LOWER SIDE	TO BE COMPLETED WITH THE COLOR CODE
6	B-MC-4317A...	TRAY GRID 3 GROUPS	TO BE COMPLETED WITH THE COLOR CODE
7	B-MC-4311...	GROUP PROTECTION 3GR	TO BE COMPLETED WITH THE COLOR CODE
7 a	B-MC-4310...	GROUP PROTECTION 2GR	TO BE COMPLETED WITH THE COLOR CODE
8	B-00-0434	SCREW M6 x 16 TSP A2 DIN 7991	
9	B-MC-4340...	FRONT PANEL 3GR	TO BE COMPLETED WITH THE COLOR CODE
9 a	B-MC-4339...	FRONT PANEL 2GR	TO BE COMPLETED WITH THE COLOR CODE
10	B-00-0294	SCREW TSEI M 4 x 10 A2 DIN 799	
11	B-MC-2089	DALLA CORTE LOGO	
12	B-MC-4314	SOLENOID VALVE COVER	
13	B-MC-4343...	EXTERNAL LEFT SIDE WHITE	TO BE COMPLETED WITH THE COLOR CODE
14	B-MC-4342...	EXTERNAL LEFT SIDE	TO BE COMPLETED WITH THE COLOR CODE
15	B-MC-4341...	FRONTAL FINISHING	TO BE COMPLETED WITH THE COLOR CODE
16	B-00-0385	SCREW TTCE A2 M6x16 ISO7380-2	
17	B-MC-4322...	LH CUP WARMER SUPPORT	TO BE COMPLETED WITH THE COLOR CODE
18	B-MC-4321...	LH CUP WARMER SUPPORT	TO BE COMPLETED WITH THE COLOR CODE
19	B-MC-4362...	STEAM LAUNCH FINISHING	TO BE COMPLETED WITH THE COLOR CODE
20	B-MC-4334...	FRONT TOP PANEL 3GR	TO BE COMPLETED WITH THE COLOR CODE
20 a	B-MC-4333...	FRONT TOP PANEL 2GR	TO BE COMPLETED WITH THE COLOR CODE
21	A-MC-4207...	SERVICES KEYBOARD	TO BE COMPLETED WITH THE COLOR CODE
22	B-00-0106	SCREW TBCE M6x16 INOX GLOSSY	
23	B-MC-4354	EXTERNAL SIDE P. FINISHING EL.	
24	B-MC-4402	NUT BLOCKS SIDE	
25	B-MC-4401	BUSHING FOR LEVER STEAM TAP	
26	B-00-0342	SCREW TCCE M5x30 A2 DIN912	
27	B-MC-4400	STEAM TAP SHAFT	
28	B-MC-4348A	STEAM KNOB	
29	B-MC-4349	STEAM KNOB FINISHING	
30	B-MC-4350A	GROUP KNOB	
31	B-MC-4351	GROUP KNOB FINISHING	
32	B-MC-4229 **	LED ZERO	
33	B-MC-4363A-NX	LH TRAY SIDE PROTECTION	
34	B-MC-4364A-NX	RH TRAY SIDE PROTECTION	

DALLA CORTE
SPARE PARTS CATALOGUE

DESCRIPTION	FRONTAL BODY
ASSEMBLY CODE	

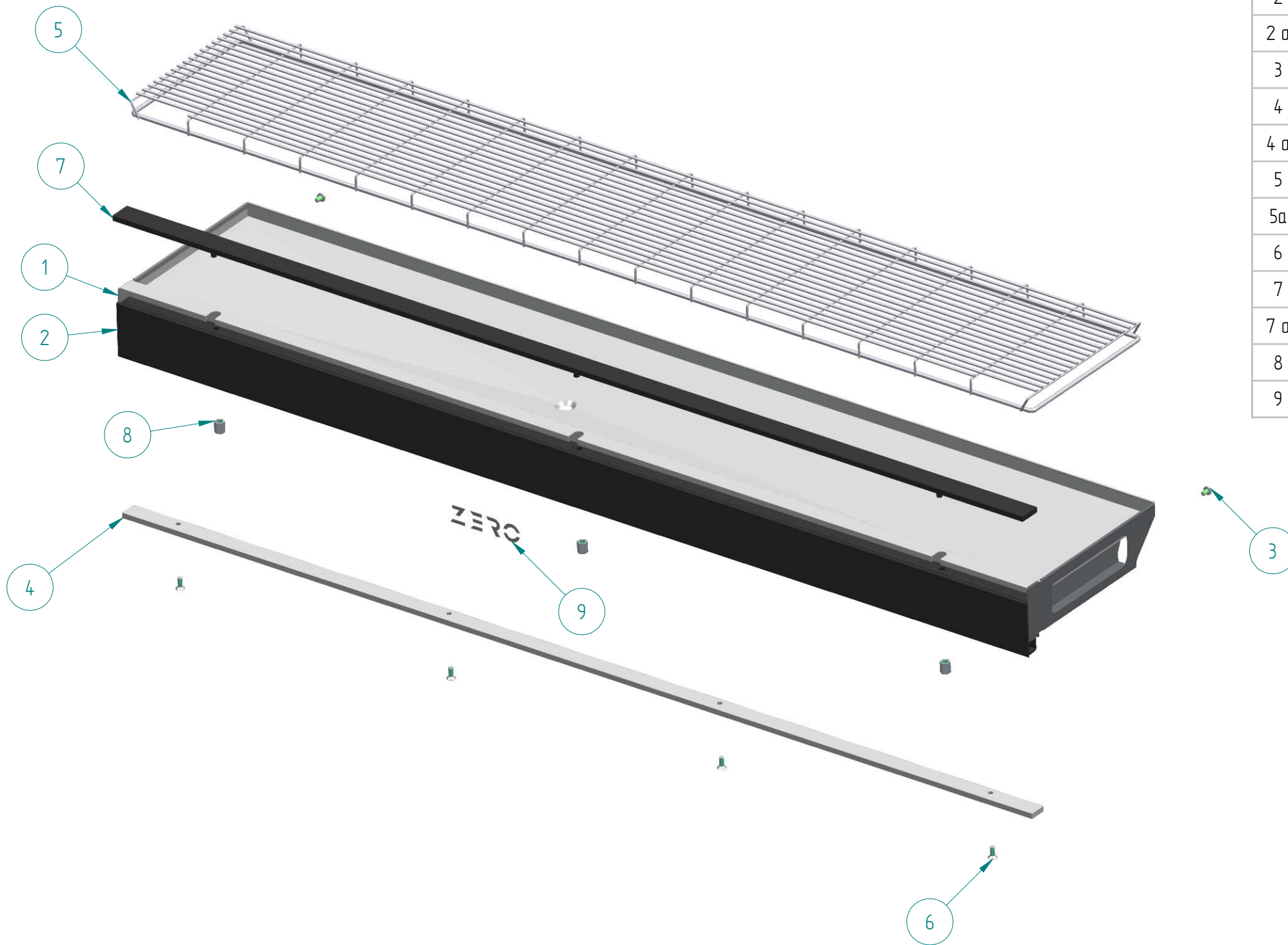
REV	01
EMISSION DATE	MARCH 21

NOTE:
* ALTERNATIVE TO THE REPRESENTED COMPONENT



ITEM	OGGETTO	DESCRIZIONE	NOTE
33	B-MC-4361...	LOWER REAR PROFILE 3GR	TO BE COMPLETED WITH THE COLOR CODE
33 a	B-MC-4360...	LOWER REAR PROFILE 2GR	TO BE COMPLETED WITH THE COLOR CODE
34	B-MC-4016	REAR BASE FINISHING 3GR	
34 a	B-MC-4015	REAR BASE FINISHING 2GR	
35	B-00-0294	SCREW TSEI M 4 x 10 A2 DIN 799	
36	B-MC-2089	DALLA CORTE LOGO	
37	B-MC-4336...	REAR CENTRAL PANEL 3GR	TO BE COMPLETED WITH THE COLOR CODE
37 a	B-MC-4335...	REAR CENTRAL PANEL 2GR	TO BE COMPLETED WITH THE COLOR CODE
38	B-MC-4305...	REAR PANEL 3GR	TO BE COMPLETED WITH THE COLOR CODE
38 a	B-MC-4304...	REAR PANEL 2GR	TO BE COMPLETED WITH THE COLOR CODE
39	B-MC-4305-DL	REAR PANEL 3GR GLOSSY DARK	
39 a	B-MC-4305-NBL	REAR PANEL 3GR GLOSSY NAVY BLUE	
39 b	B-MC-4305-VOL	REAR PANEL 3GR GLOSSY OLIVE GREEN	
39 c	B-MC-4305-WL	REAR PANEL 3GR GLOSSY WHITE	
39 d	B-MC-4304-DL	REAR PANEL 2GR GLOSSY DARK	
39 e	B-MC-4304-NBL	REAR PANEL 2GR GLOSSY NAVY BLUE	
39 f	B-MC-4304-VOL	REAR PANEL 2GR GLOSSY OLIVE GREEN	
39 g	B-MC-4304-WL	REAR PANEL 2GR GLOSSY WHITE	

COLOR CODE (ex. B-MC-4305-D)	
-D	DARK
-W	WHITE
-NB	NAVY BLUE
-VO	OLIVE GREEN



ITEM	CODE	DESCRIPTION	NOTE
	A-MC-4303...	COMPLETE TRAY 3GR	TO BE COMPLETED WITH THE COLOR CODE
	A-MC-4302...	COMPLETE TRAY 2GR	TO BE COMPLETED WITH THE COLOR CODE
1	B-MC-4347	TRAY 3 GROUPS	
1 a	B-MC-4346	TRAY 2 GROUPS	
2	B-MC-4309...	FRONTAL TRAY 3GR	TO BE COMPLETED WITH THE COLOR CODE
2 a	B-MC-4308...	FRONTAL TRAY 2GR	TO BE COMPLETED WITH THE COLOR CODE
3	B-00-0111	SCREW TC+ A2 M4x6 DIN7985	
4	B-MC-4014	FRONT BASE FINISHING 3GR	
4 a	B-MC-4013	FRONT BASE FINISHING 2GR	
5	B-MC-4316	TRAY GRID 3 GROUPS	
5a	B-MC-4315	TRAY GRID 2 GROUPS	
6	B-00-0294	SCREW TSEI M 4 x 10 A2 DIN 799	
7	B-MC-4330...	TOP TRAY FINISHING 3GR	TO BE COMPLETED WITH THE COLOR CODE
7 a	B-MC-4329...	TOP TRAY FINISHING 2GR	TO BE COMPLETED WITH THE COLOR CODE
8	B-00-0379	SPHERICAL HEAD PIN A2 2,5x6	
9	B-MC-4357	PLATE LOGO ZERO	

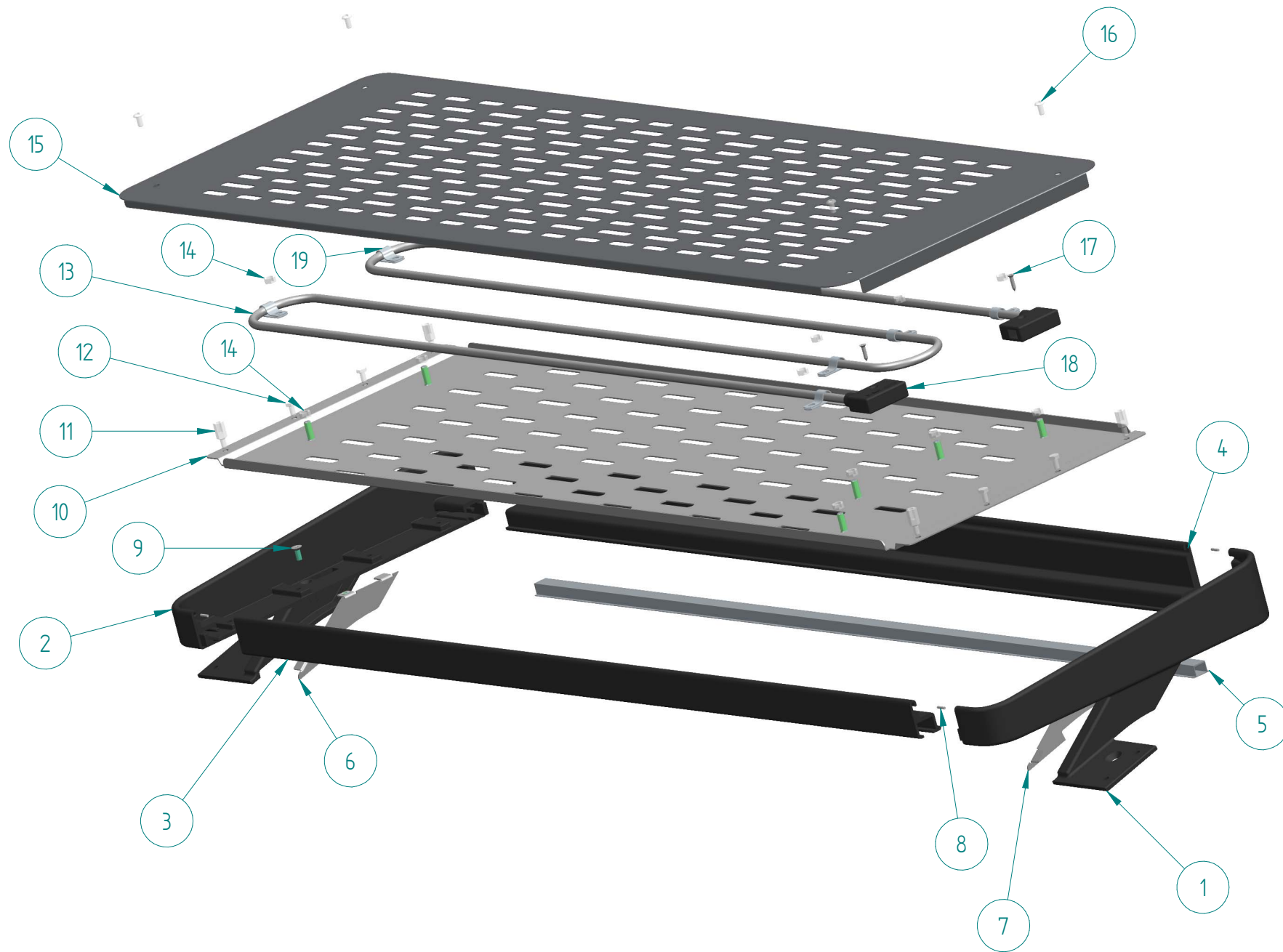
COLOR CODE (ex. B-MC-4330-D)	
-D	DARK
-W	WHITE
-NB	NAVY BLUE
-VO	OLIVE GREEN

DALLA CORTE
SPARE PARTS CATALOGUE

DESCRIPTION COMPLETE TRAY	REV 01
ASSEMBLY CODE	EMISSION DATE MARCH 21

NOTE:
* ALTERNATIVE TO THE REPRESENTED COMPONENT

SHEET
21



ITEM	CODE	DESCRIPTION	NOTE
	A-MC-4301...	CUP WARMER ASSEMBLY 3GR	TO BE COMPLETED WITH THE COLOR CODE
	A-MC-4300...	CUP WARMER ASSEMBLY 2GR	TO BE COMPLETED WITH THE COLOR CODE
1	B-MC-4320...	RH CUP WARMER SIDE	TO BE COMPLETED WITH THE COLOR CODE
2	B-MC-4319...	LH CUP WARMER SIDE	TO BE COMPLETED WITH THE COLOR CODE
3	B-MC-4303...	FRONT CUP WARMER CONNECTION 3G	TO BE COMPLETED WITH THE COLOR CODE
3 a	B-MC-4302...	FRONT CUP WARMER CONNECTION 2G	TO BE COMPLETED WITH THE COLOR CODE
4	B-MC-4301...	REAR CUP WARMER CONNECTION 3GR	TO BE COMPLETED WITH THE COLOR CODE
4 a	B-MC-4300...	REAR CUP WARMER CONNECTION 2GR	TO BE COMPLETED WITH THE COLOR CODE
5	A-MC-4202A	COMPLETE LED BAR 3 GR	
5 a	A-MC-4201A	COMPLETE LED BAR 2 GR	
6	B-MC-4327-NX	LH CUP WARMER SIDE COVER	
7	B-MC-4328-NX	RH CUP WARMER SIDE COVER	
8	B-00-0368	CYLINDRICAL PIN Ø2x8	
9	B-00-0294	SCREW TSEI M 4 x 10 A2 DIN 799	
10	B-MC-4324	CUP WARMER PLATE 3GR	
10 a	B-MC-4323	CUP WARMER PLATE 2GR	
11	B-00-0426	HEXAGONAL M/F SUPPORT M4 L 12	
12	B-00-0102	SCREW TE 8.8 M4x8 DIN933	
13	B-MC-4201	CUP WARMER RESISTANCE 200W	
13 a	B-MC-4200	CUP WARMER RESISTANCE 150W	
14	B-00-0379	NUT M5 DIN439	
15	B-MC-4326	CUP HOLDER GRID 3GR	
15 a	B-MC-4325	CUP HOLDER GRID 2GR	
16	B-00-0295	SCREW TBEI A2 M4x8 UNI7380	
17	B-00-0122	SELF-TAPPING SC. TPS+2.9x13	
18	B-MC-4223	RESISTANCE CONNECTION COVER	
19	B-00-0433	CLAMP D. 6,4	

COLOR CODE (ex. B-MC-4301-D)	
-D	DARK
-W	WHITE
-NB	NAVY BLUE
-VO	OLIVE GREEN



A-MC-1046
PORTAFILTER WHIT THERMOCOUPLE

B-MC-0404
GROUP CLEANING TABLETS



B-00-0045
BLACK SPIRAL DRAIN PIPE (M)

B-MC-0194
SHOWER BRUSH

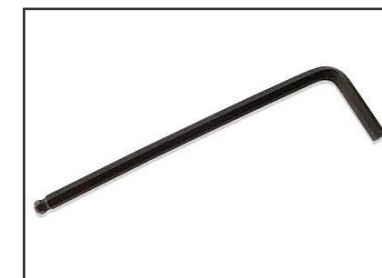


B-00-0029
FLEX PIPE 3/8" L70

B-MC-0225
KEY FOR SHOWER
D54 SCREW



B-00-0382
ANGLED HEXAGON
KEY 4mm





K-0226

ZERO BARISTA SPARE PARTS KIT

K-0227

ZERO CLASSIC SPARE PARTS KIT



K-0225

KIT GADGET ZERO



1-PC-083

TAMPING MAT



A-PC-0001

COFFEE CALIBER

A-PC-0002

INOX + AL TAMPER D58



B-MC-0478A

INOX + AL TAMPER D 54.5

B-MC-0478A-0

INOX + OAK TAMPER D 54.5

B-MC-0478A-WN

INOX + WN TAMPER D 54.5

