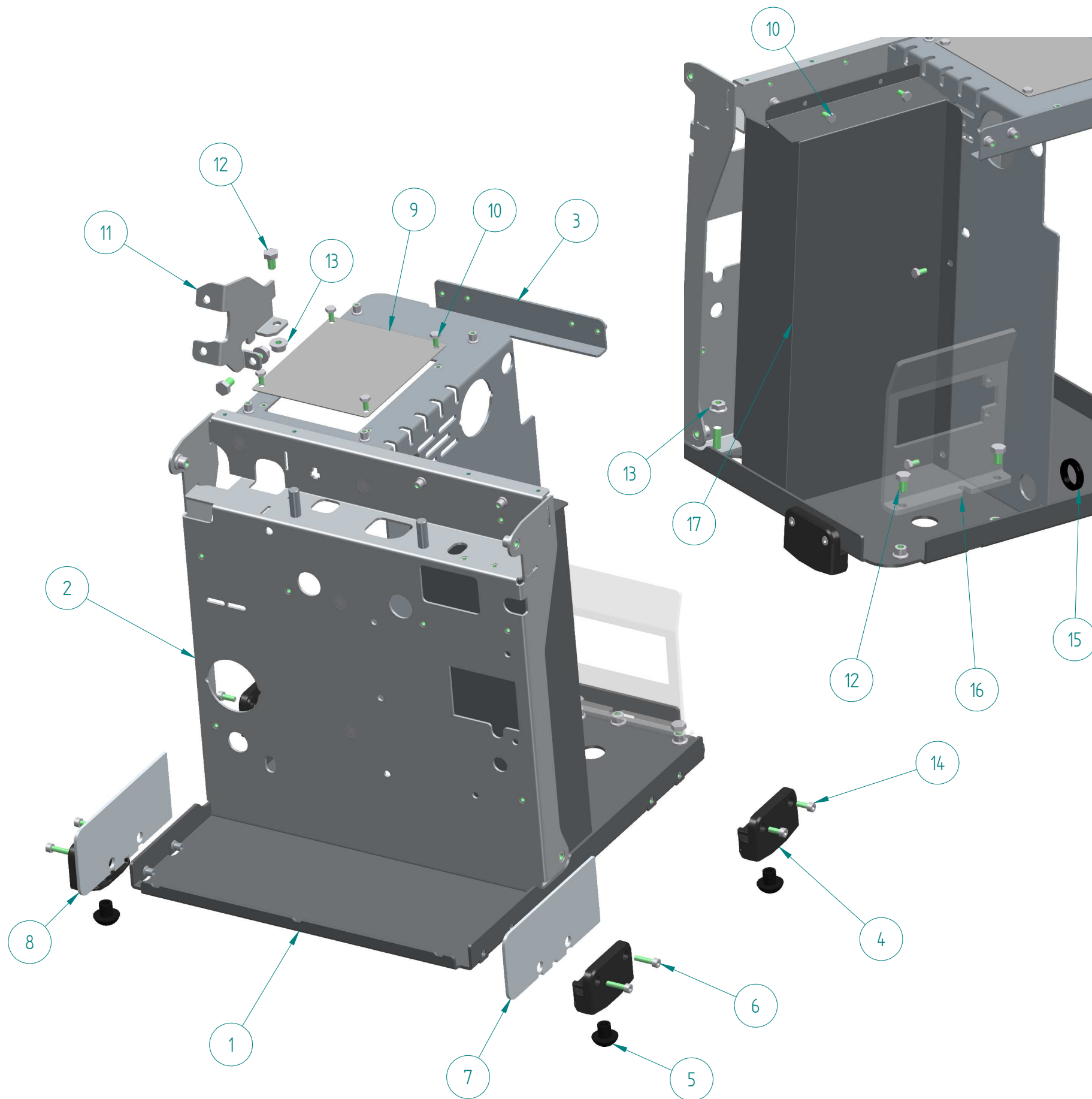


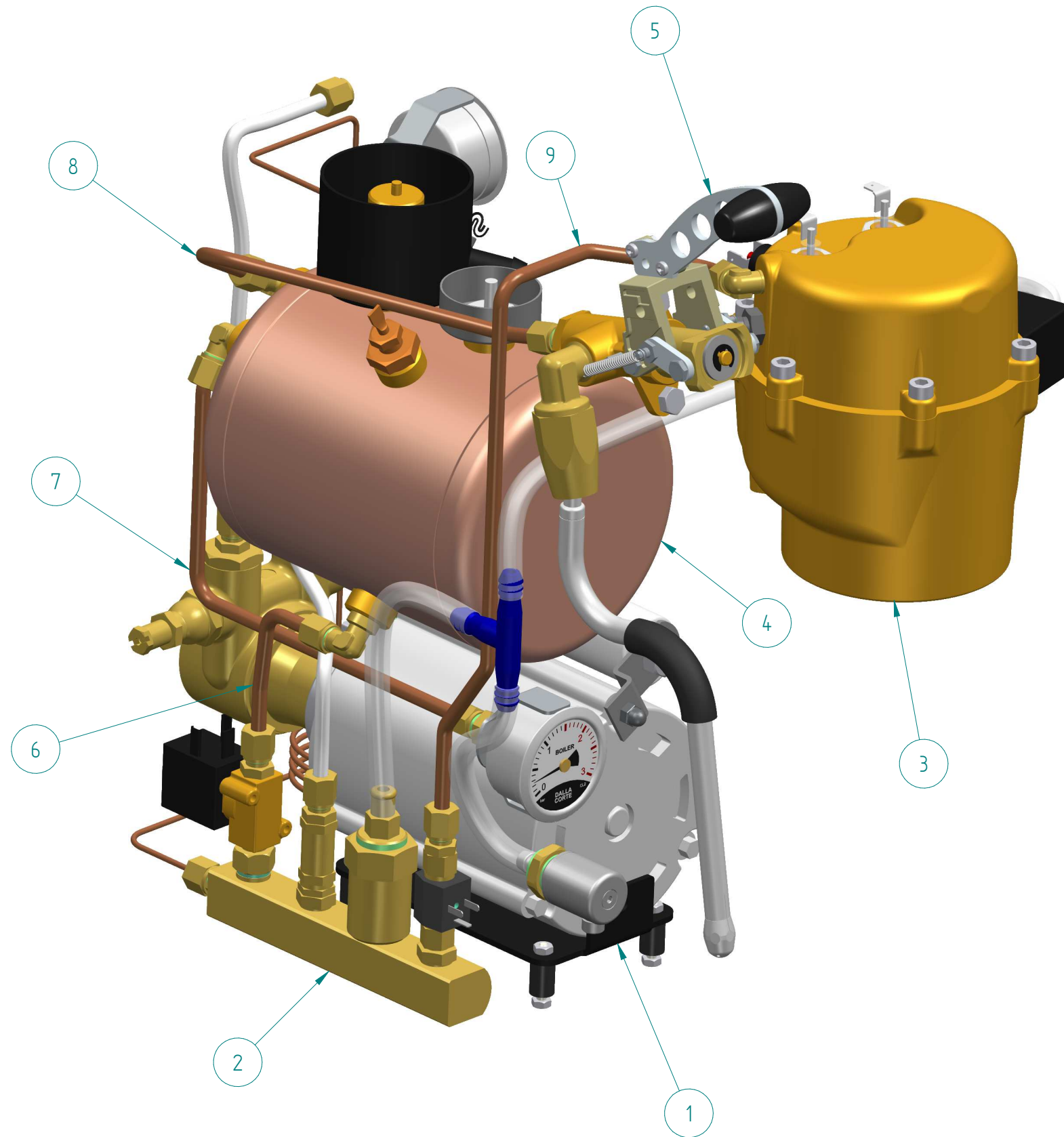
DALLA
CORTE

SPARE PARTS CATALOGUE

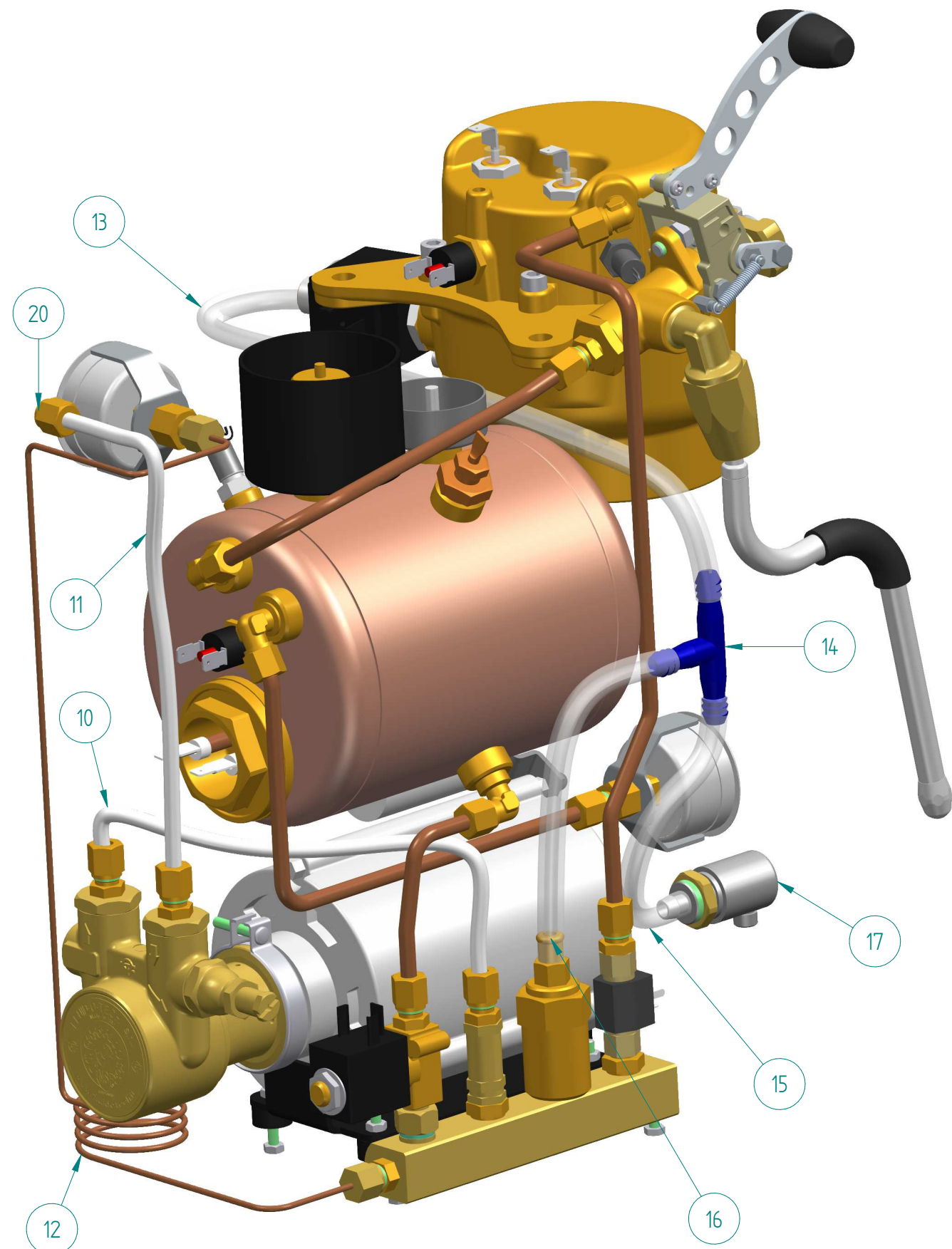
S+UDIC



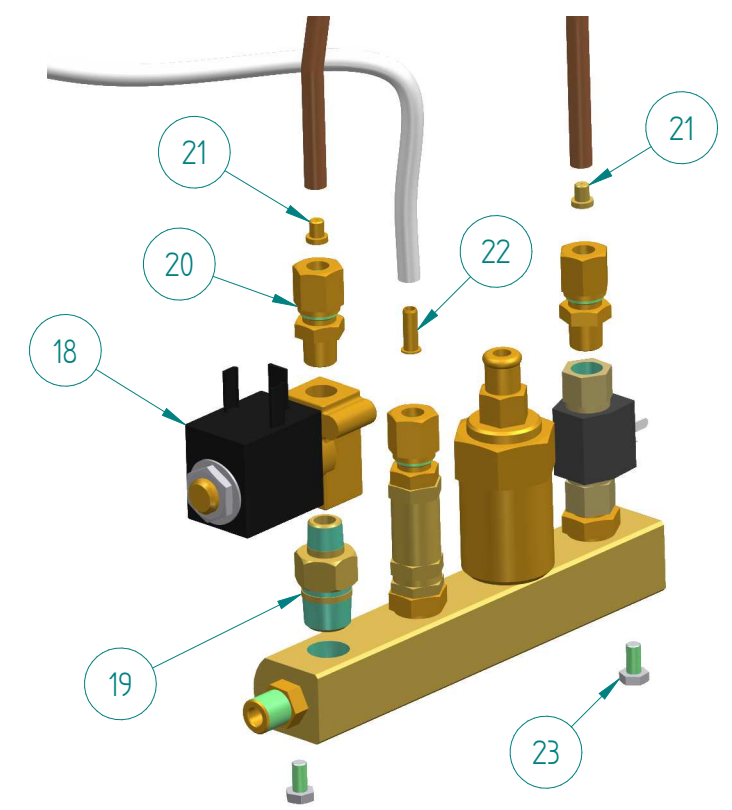
ITEM	CODE	DESCRIPTION	NOTE
	A-MC-3001	ASSEMBLED FRAME	
1	B-MC-3001	CHASSIS BASE	UNABLE TO ORDER
2	B-MC-3002	FRONT VERTICAL SUPPORT	UNABLE TO ORDER
3	B-MC-3003	CENTRE VERTICAL SUPPORT	UNABLE TO ORDER
4	B-MC-3035	FOOT	
5	B-00-0196	RUBBER FOOT	
6	B-00-0209	SCREW TCCE M4x16 A2 DIN912	
7	B-MC-3005	FINISHING SIDE RIGHT	
8	B-MC-3052	SIDE COMPLETION SX	
9	B-MC-3045	CUP WARMER CARTER	UNABLE TO ORDER
10	B-00-0102	SCREW TE 8.8 M4x8 DIN933	
11	B-MC-3004	STEAM TAP SUPPORT	UNABLE TO ORDER
12	B-00-0107	SCREW TE 8.8 M6x10 DIN933	
13	B-00-0113	FLANGED NUT M6 DIN6923	
14	B-00-0110	SCREW TCEI A2 M4x10 DIN912	
15	B-00-0383	FAIRLEAD PG18 UL V0	
16	B-MC-3016A	SUPPORT CAPACITIVE SENSOR	
17	B-MC-3015A	MAINBOARD COVER	UNABLE TO ORDER



ITEM	CODE	DESCRIPTION	NOTE
1	A-MC-3019	MOTOR PUMP 120W 230V 70L/h	See Detail Sheet 8
2	A-MC-3005	COMPLETE MANIFOLD	See Detail Sheet 9
3	A-MC-3003	ASSEMBLED UNIT 230V	See Detail Sheet 13
4	A-MC-3002	COMPLETE BOILER 1,6 LT	See Detail Sheet 10
5	A-MC-3004	COMPLETE STEAM TAP	See Detail Sheet 11
6	B-MC-3019	BOILER FEED PIPE	ALSO ORDER n.2 pz B-00-0012A
7	B-MC-3017	PRESSURE GAUGE PIPE	ALSO ORDER n.2 pz B-00-0012A
8	B-MC-3020	STEAM TAP PIPE	ALSO ORDER n.2 pz B-00-0012A
9	B-MC-3018	GROUP FEED PIPE	ALSO ORDER n.2 pz B-00-0012A
53*	B-00-0107	SCREW TE 8.8 M6x10 DIN933	



ITEM	CODE	DESCRIPTION	NOTE
10	B-00-0396	TUBE $\phi 6 \times 4$ PTFE PUMP DELIVERY	ALSO ORDER 2 pz B-00-0012A + 2 pz B-00-0126A
11	B-00-0396	TUBE $\phi 6 \times 4$ PTFE PUMP SUCTION	ALSO ORDER 2 pz B-00-0012A + 2 pz B-00-0126A
12	B-MC-0071	WATER PRESSURE GAUGE PIPE	
13	B-00-0082	SILICONE PIPE 5x10	FOR SOLENOID VALVE (AT METER)
14	B-00-0075	T-COUPLING D5	
15	B-00-0082	SILICONE PIPE 5x10	FOR DISCHARGE (AT METER)
16	B-00-0082	SILICONE PIPE 5x10	FOR EXPANSION VALVE (AT METER)
17	A-MC-3015	DRAIN TERMINAL ASSEMBLED	
18	B-00-0340	SOL.VALVE 2V 230V SMALL	
19	B-00-0393	COUPLING 3 PIECES 1/8" - 1/4"	
20	B-00-0012A	STRAIGHT CONNECTION 1/8" D6	
21	B-MC-3046	GIGLEUR 0,52 mm	
22	B-00-0126A	REINF. CORE 247 6/4 CW510L	
23	B-00-0102	SCREW TE 8.8 M4x8 DIN933	



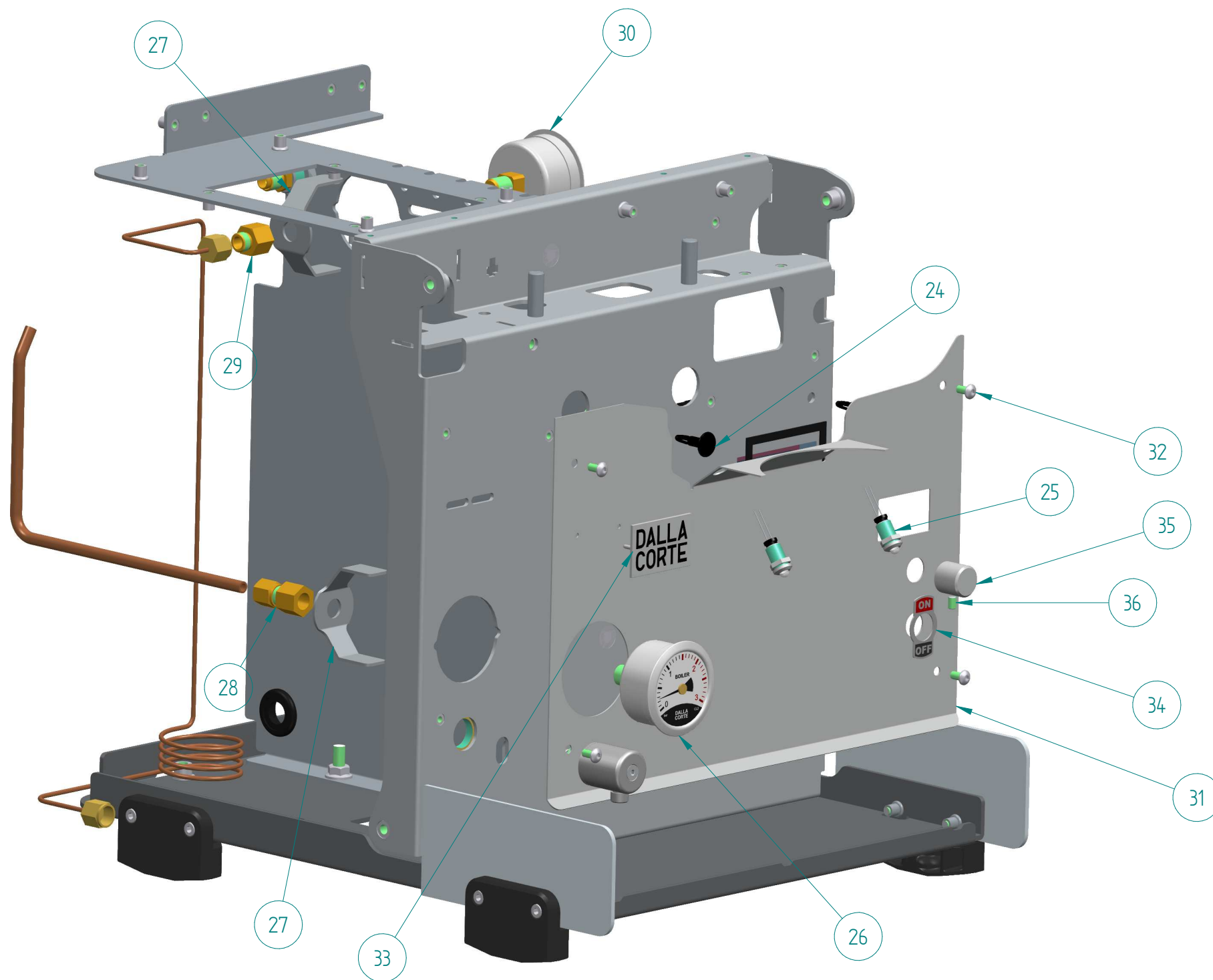
DALLA CORTE
SPARE PARTS CATALOGUE
STUDIO

DESCRIPTION	HYDRAULIC SYSTEM (rear view)
ASSEMBLY CODE	

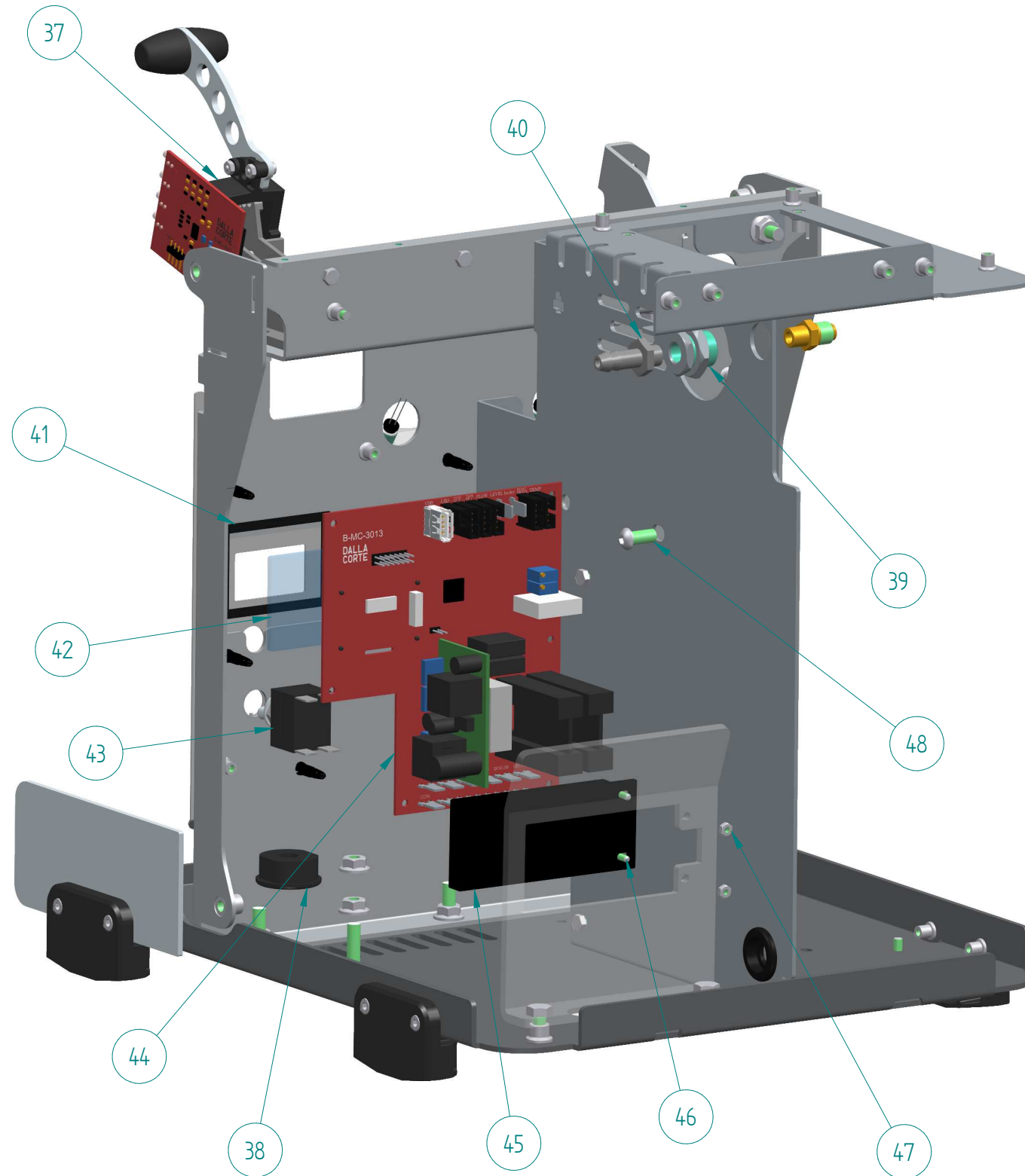
REV	07
EMISSION DATE	OCTOBER

NOTE:	* ALTERNATIVE TO THE REPRESENTED COMPONENT

DALLA CORTE SRL reserves by law the property of the drawing, prohibiting its reproduction or disclosure to third parties or competitors without prior written advice.

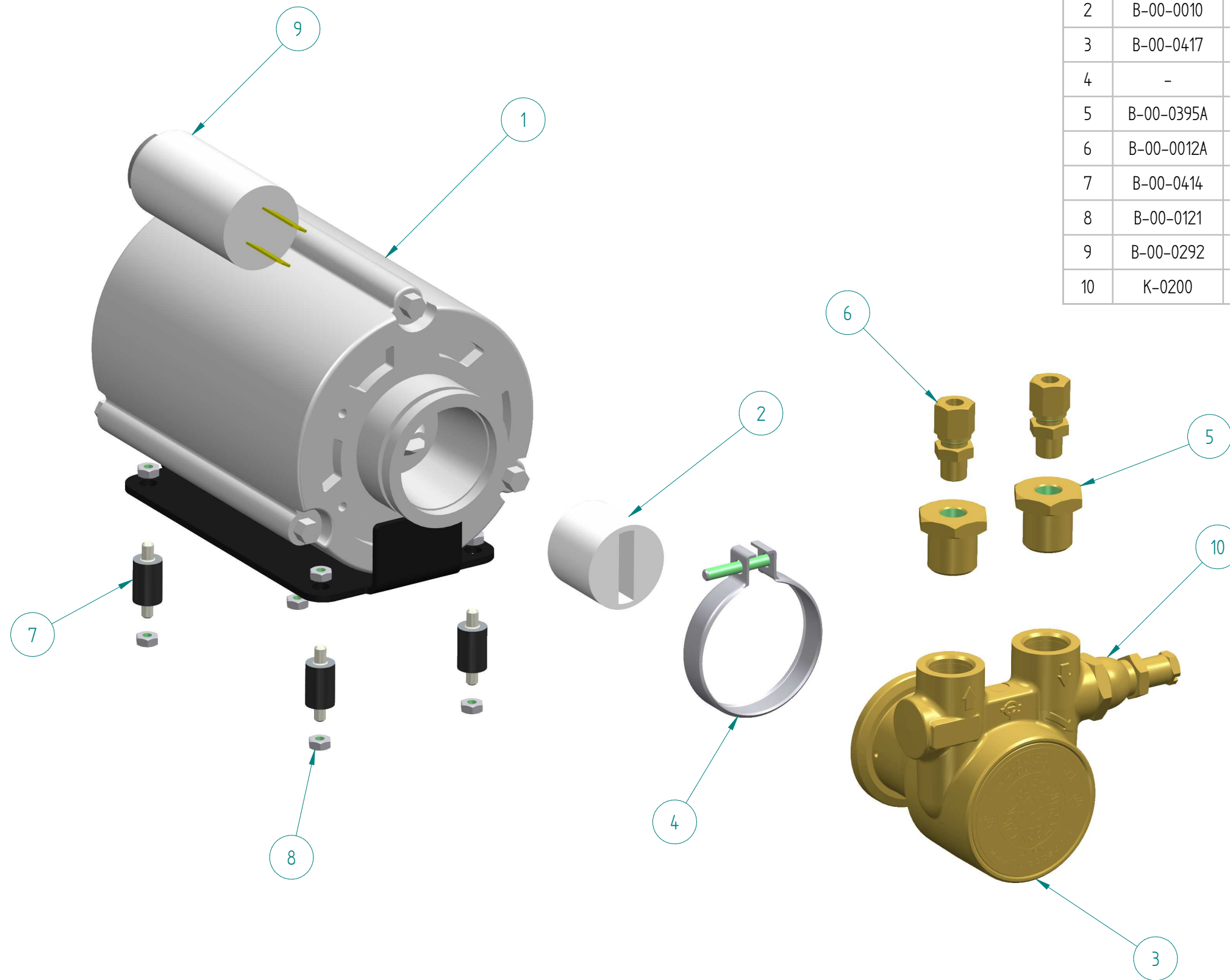


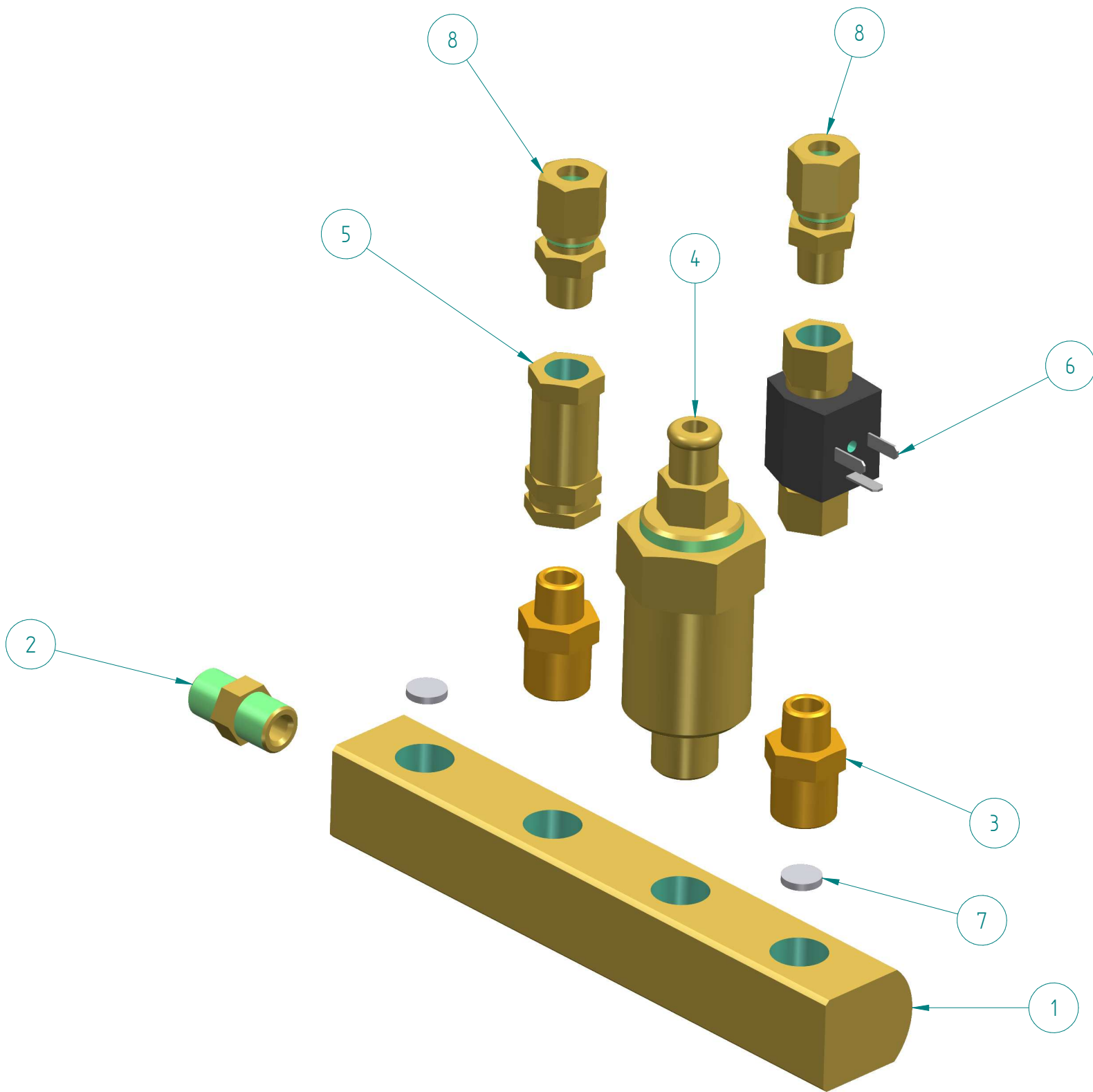
ITEM	CODE	DESCRIPTION	NOTE
24	B-00-0348	PRESS. CONICAL SUPPORT D4	
25	B-MC-3022	LED STUDIO	
26	B-MC-1579	BOILER MANOMETER MY18	
27	B-MC-1105	CLAMP MANOMETER	
28	B-00-0134A	STRAIGHT COUPLING 1/8" D6	
29	B-00-0187A	EXTENSION 1/8" MF	
30	B-MC-1580	PUMP MANOMETER MY18	
31	B-MC-3027	LOWER FRONT INOX	
32	B-00-0295	SCREW TBEI A2 M4x8 UNI7380	
33	B-MC-0704A	DC LOGO PL. SMALL 42X46	
34	B-00-0326	ON-OFF PLATE	
35	B-MC-3024	ENCODER KNOB	
36	B-00-0403	GRUB SCREW A2 M4X6 PLAN	



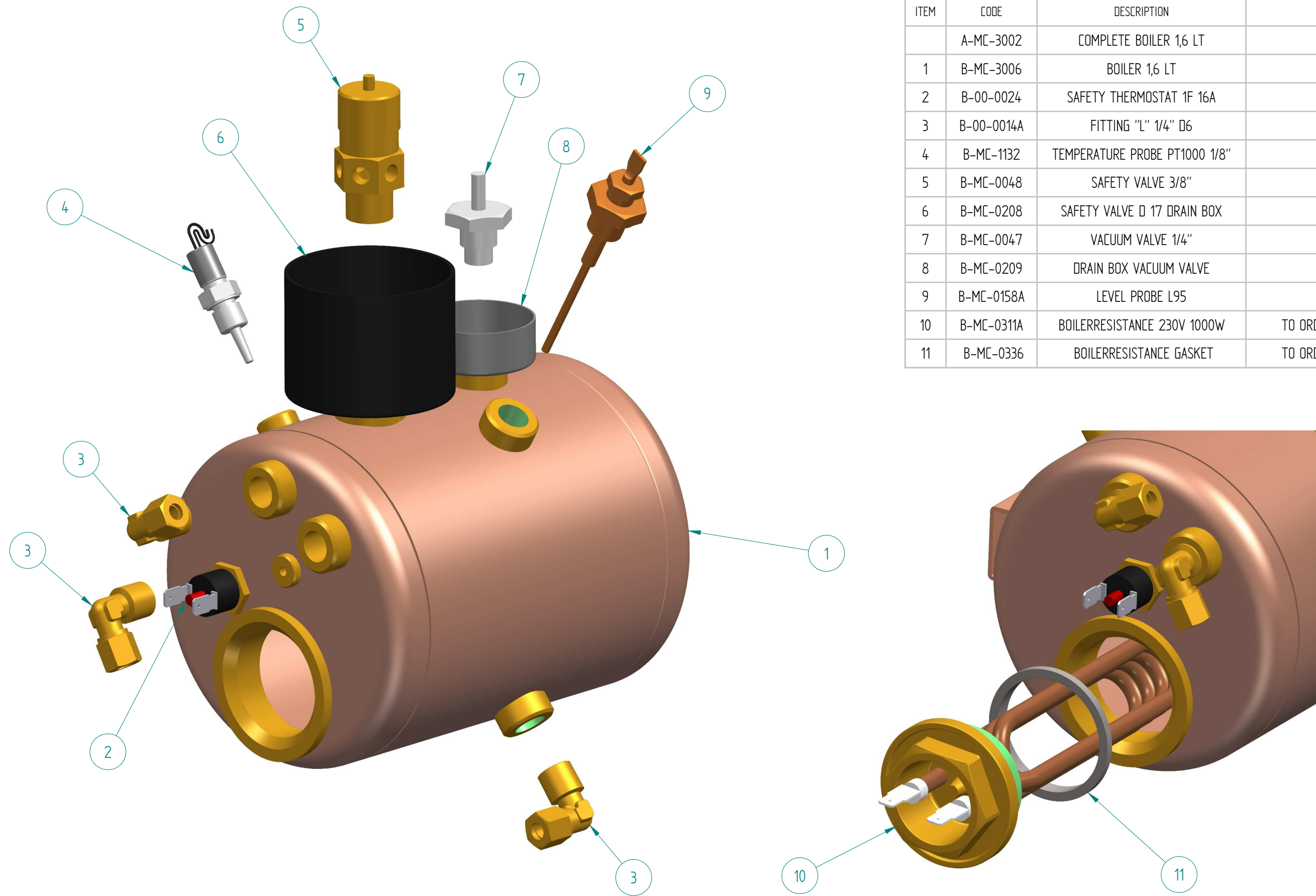
ITEM	CODE	DESCRIPTION	NOTE
37	A-MC-3006	COMPLETE SWITCHING UNIT	See Detail Sheet 12
38	B-00-0400	CABLE GLAND PA 107	
39	B-00-0401A	WALL-THROUGH FITTING 1/8F	
40	B-00-0128A	CONNECTION FOR RUBBER 454 8 1/8" OR	
41	B-MC-3058	GASKET STUDIO DISPLAY GLASS	
42	B-MC-3047	STUDIO DISPLAY GLASS	
43	B-00-0296	BIPOLAR LEVER SWITCH W/RING N.	
44	B-MC-3013	MANAGEMENT ELECTRICAL BOARD	
45	B-MC-3014	CAPACITIVE LEVEL SENSOR	
46	B-00-0261	SCREW TC+ A2 M3x12 DIN7985	
47	B-00-0135	NUT M3 UNI5588	
48	B-00-0106	SCREW TBEI M6 x 14	

ITEM	CODE	DESCRIPTION	NOTE
	A-MC-3019	MOTOR PUMP 120W 230V 70L/h	
1	B-00-0390	MOTOR 120W 230V 50/60Hz CLF	
2	B-00-0010	PUMPING UNIT COUPLING - NYLON	
3	B-00-0417	PUMPING UNIT 70 L	
4	-	CLAMPING CLAMP	AVAILABLE ONLY WITH B-00-0389
5	B-00-0395A	REDUCTION 3/8" M - 1/8" F C/W OR	
6	B-00-0012A	STRAIGHT CONNECTION 1/8" D6	
7	B-00-0414	ANTIVIBRATION M4 10X15 mm	
8	B-00-0121	NUT M4	
9	B-00-0292	CONDENSER 6 µF 450V	
10	K-0200	PUMPING BYPASS KIT	

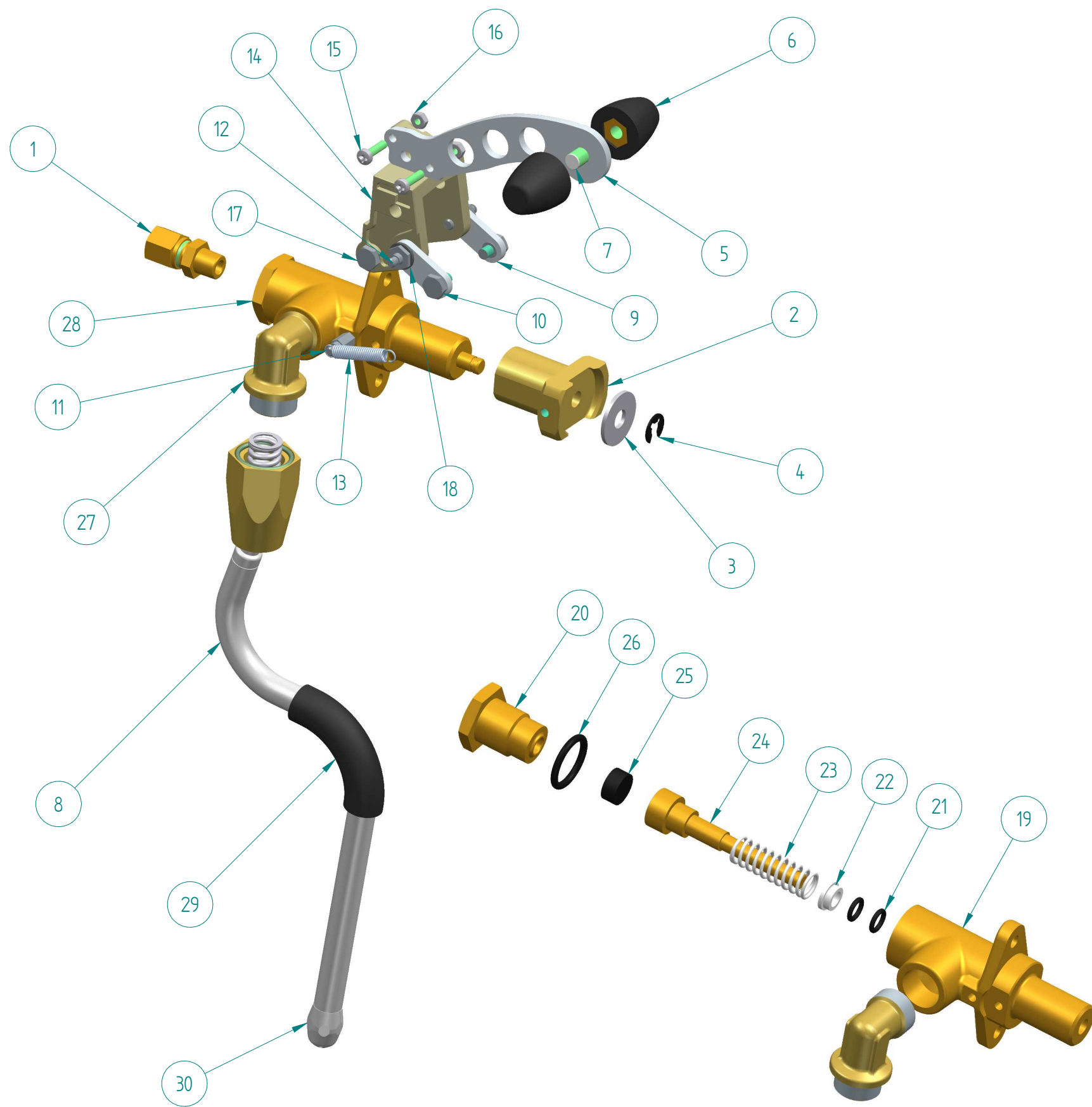




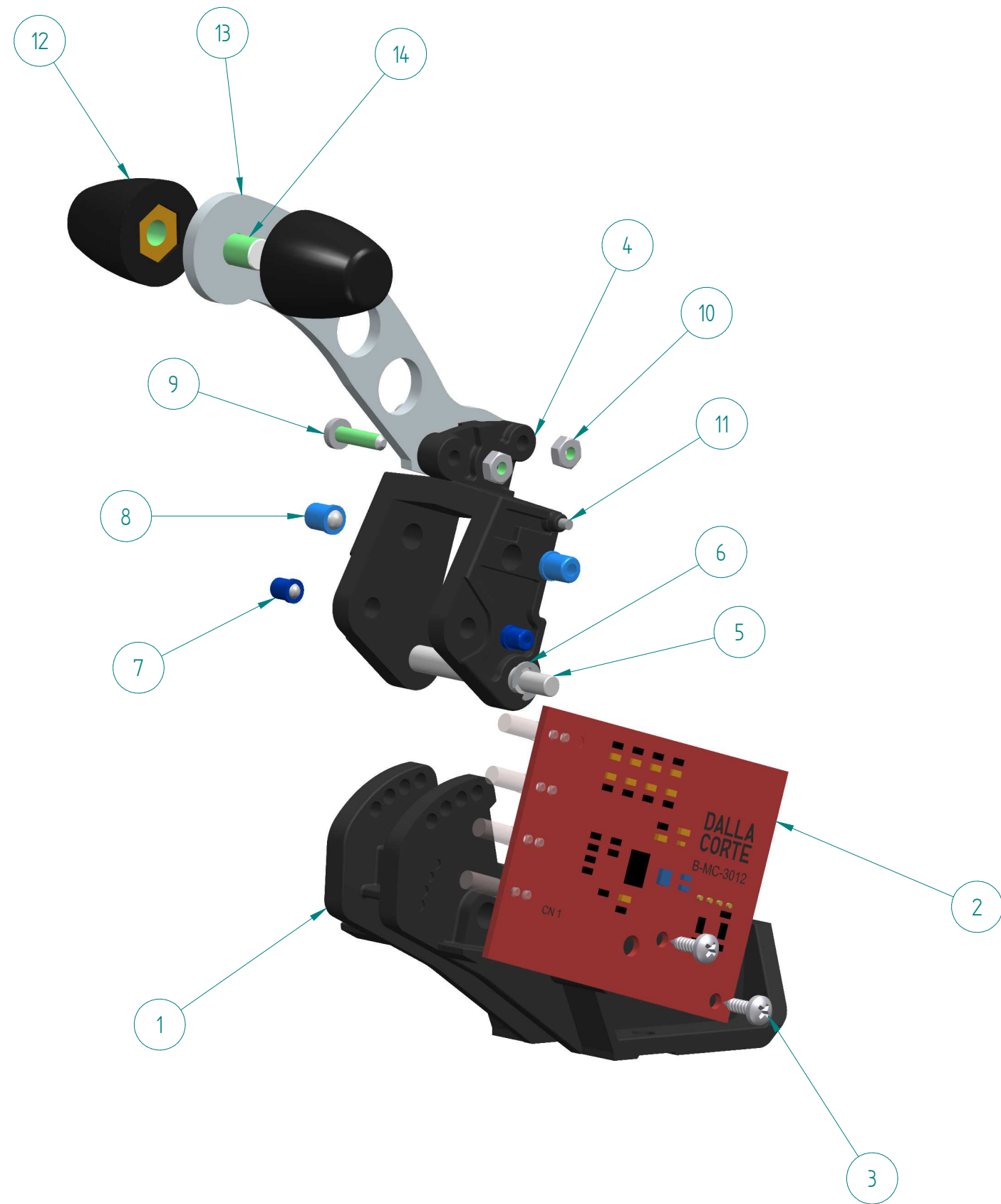
ITEM	CODE	DESCRIPTION	NOTE
	A-MC-3005	COMPLETE MANIFOLD	
1	B-MC-3009	MANIFOLD	
2	B-00-0179A	CONICAL NIPPLE 1/8" MM	
3	B-00-0018A	REDUCTION 1/4" X 1/8"	
4	B-MC-0120A	COMPLETE EXPANSION VALVE 1/4"	
5	B-00-0387	NON-RETURN VALVE 1/8" FF	
6	B-00-0291	FLOW METER D 1.0	
7	B-MC-0056	INOX FILTER D8 x 2	
8	B-00-0012A	STRAIGHT CONNECTION 1/8" D6	



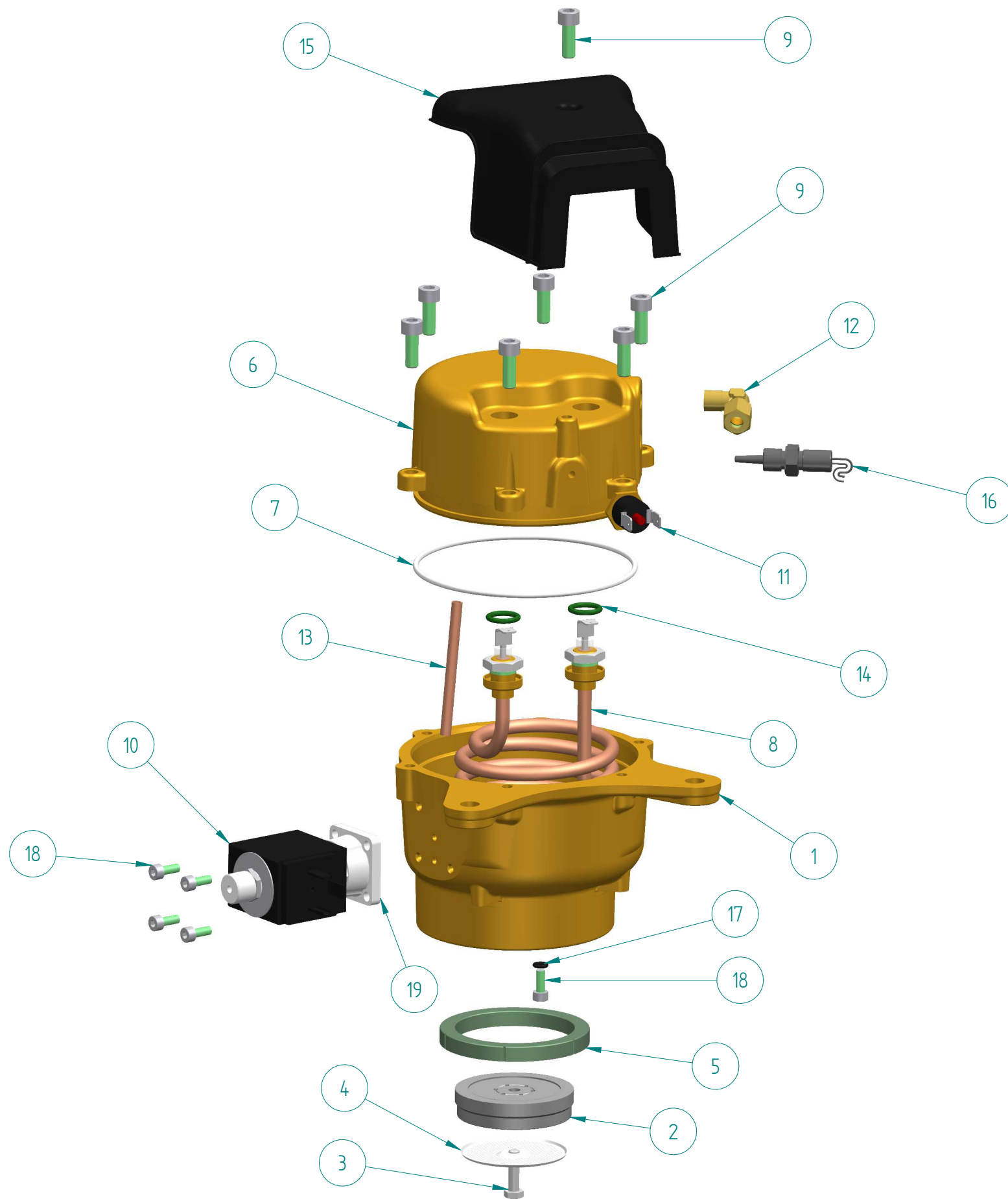
ITEM	CODE	DESCRIPTION	NOTE
	A-MC-3002	COMPLETE BOILER 1,6 LT	
1	B-MC-3006	BOILER 1,6 LT	
2	B-00-0024	SAFETY THERMOSTAT 1F 16A	
3	B-00-0014A	FITTING "L" 1/4" D6	
4	B-MC-1132	TEMPERATURE PROBE PT1000 1/8"	
5	B-MC-0048	SAFETY VALVE 3/8"	
6	B-MC-0208	SAFETY VALVE D 17 DRAIN BOX	
7	B-MC-0047	VACUUM VALVE 1/4"	
8	B-MC-0209	DRAIN BOX VACUUM VALVE	
9	B-MC-0158A	LEVEL PROBE L95	
10	B-MC-0311A	BOILERRESISTANCE 230V 1000W	TO ORDER SEPARATELY
11	B-MC-0336	BOILERRESISTANCE GASKET	TO ORDER SEPARATELY



ITEM	CODE	DESCRIPTION	NOTE
	A-MC-3004	COMPLETE STEAM TAP	
1	B-00-0012A	STRAIGHT CONNECTION 1/8" D6	
2	B-MC-1529	STEAM TAP SHAFT BUSHING	
3	B-00-0243	WASHER A2 DIN 9021 M6	
4	B-00-0161	RETAINING RING D5	
5	B-MC-3007	STEAM TAP LEVER ARM	
6	B-MC-1546	STEAM TAP LEVER KNOB	TO ORDER SEPARATELY
6 a	B-MC-1546-0 *	STEAM TAP LEVER KNOB OAK	TO ORDER SEPARATELY
6 b	B-MC-1546-WN *	STEAM TAP LEVER KNOB WALNUT	TO ORDER SEPARATELY
7	B-00-0299	GRUB SCREW M6x16 DIN916	
8	A-MC-3016	STUDIO COMPLETE STEAM PIP	
9	B-MC-1530	STEAM TAP BOOMERANG SHACKLE	
10	B-MC-1544	SHOULDER SCREW BOLT	
11	B-MC-1533	FIXED SPRING PIN	
12	B-MC-1542	MOVING SPRING PIN	
13	B-00-0361	STEAM LEVER MOVING SPRING	
14	B-MC-3011	SELECTOR LEVER	
15	B-00-0261	SCREW TC+ A2 M3x12 DIN7985	
16	B-00-0135	NUT M3 UNI5588	
17	B-MC-1532	LEVER FULCRUM PIN BOLT	
18	B-00-0369	WASHER M5 DIN125	
19	B-MC-1522	LEVER TAP BODY	UNABLE TO ORDER
20	B-MC-0532A	STEAM TAP COUNTER-BODY	UNABLE TO ORDER
21	B-00-0032	OR 5.7 x 1.9 VITON	
22	B-MC-0110	SEAL RING	UNABLE TO ORDER
23	B-MC-0111	STEAM TAP SPRING	UNABLE TO ORDER
24	B-MC-1523	STEAM TAP SHAFT	UNABLE TO ORDER
25	B-MC-0112	STEAM TAP SHUTTER GASKET	
26	B-00-0033	OR 121	
27	B-MC-0533	STEAM TAP 90° FITTING	
28	A-MC-1506	STEAM TAP BODY LEFT	
29	B-MC-0189	STEAM PIPE SHEATH	
30	B-MC-0105	ST.PIPE SPRAYER 3 HOLES W/ OR	
30 a	B-MC-0278	ST.PIPE SPRAYER 4 HOLES W/ OR	

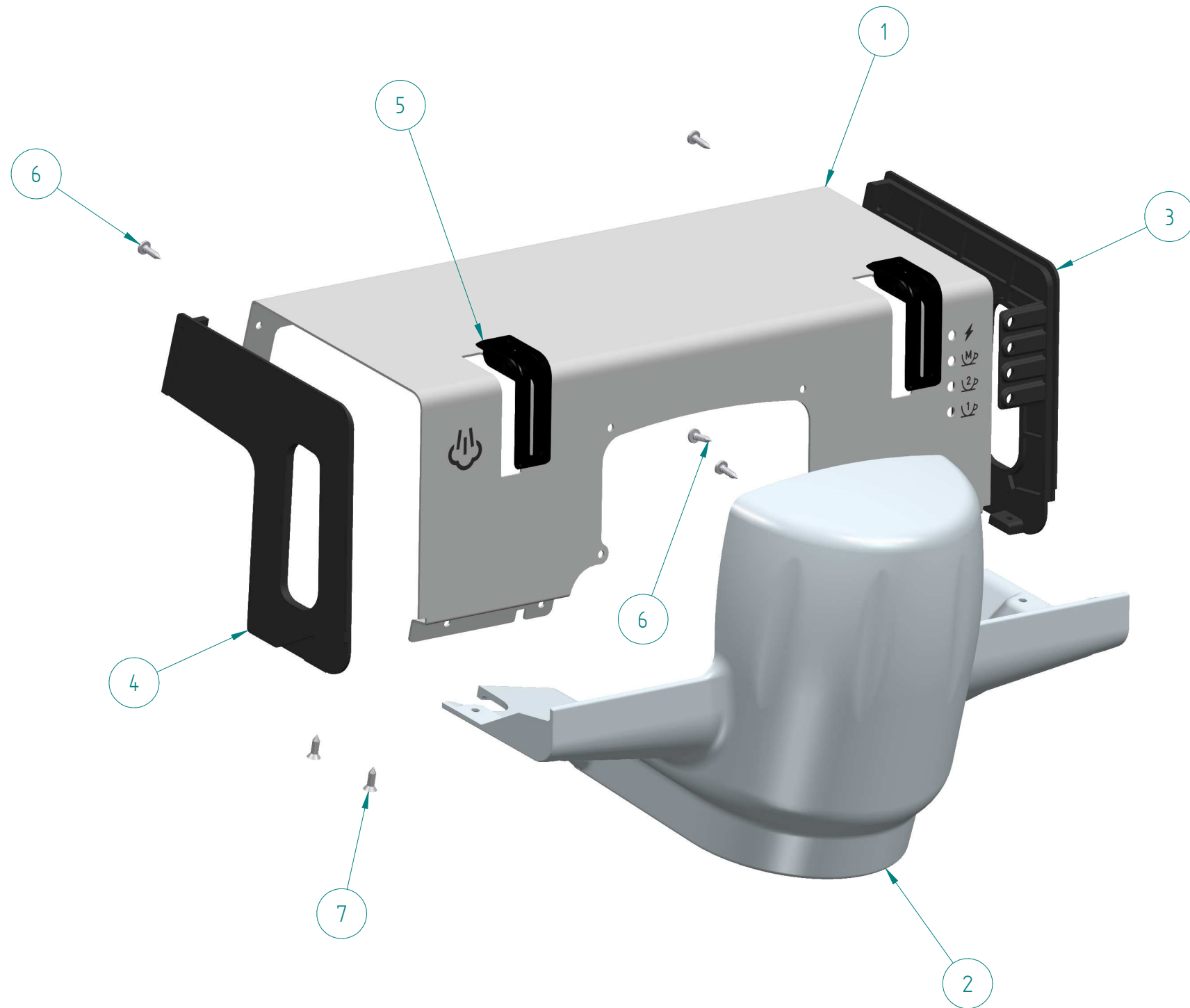


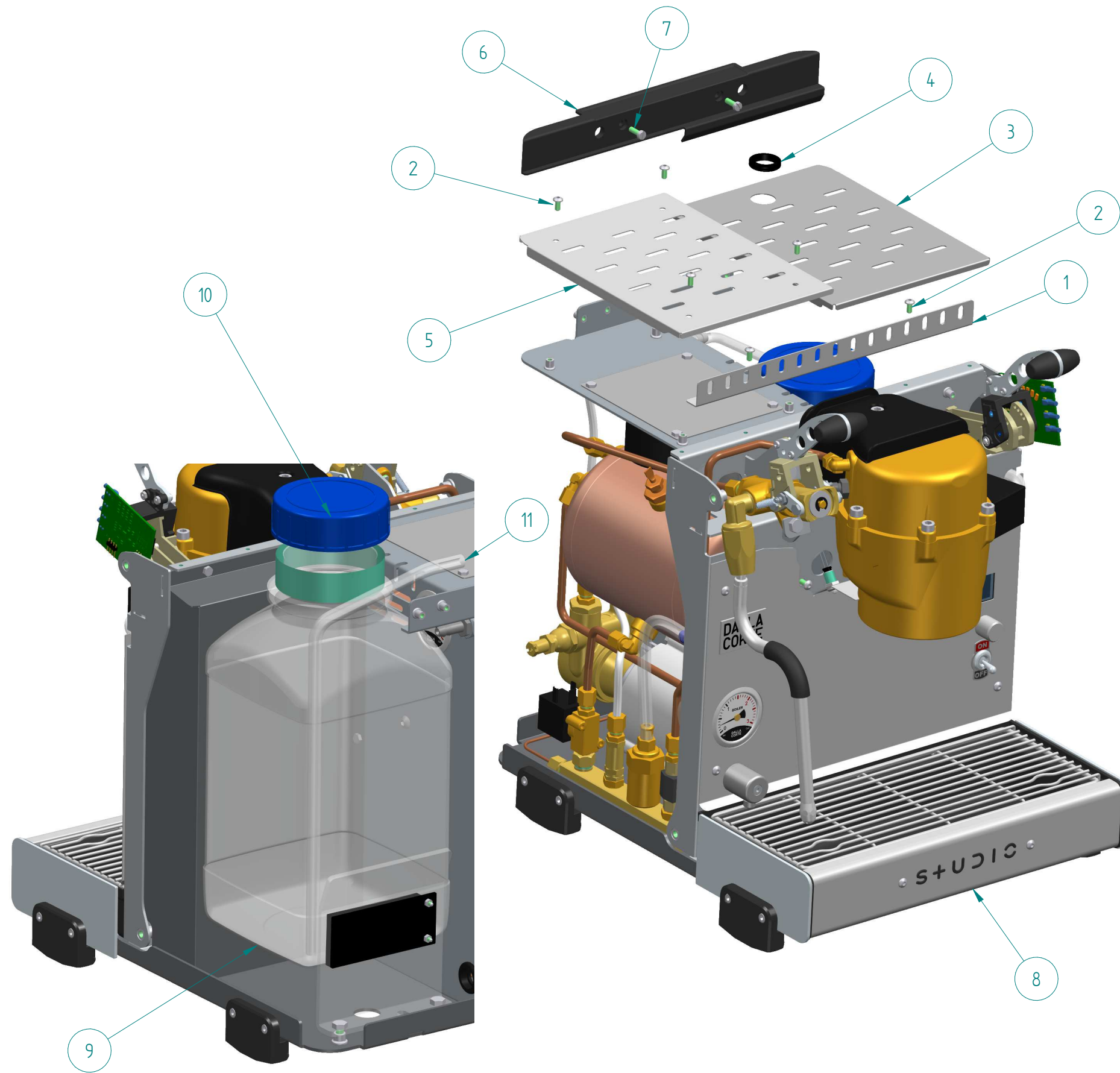
ITEM	CODE	DESCRIPTION	NOTE
	A-MC-3006	COMPLETE SWITCHING UNIT	
1	B-MC-3036A	CONTROL LEVER SUPPORT	
2	B-MC-3012	HALL EFFECT BOARD	
3	B-00-0123	SELF-TAPPING SCR. TC+ 2.9 x 9,5	
4	B-MC-3011	SELECTOR LEVER	
5	B-MC-3010	LEVER ROTATION PIN	
6	B-00-0272	RETAINING SEEGER D4 DIN 6799	
7	B-00-0289	PRESSURE WITH SPRING	
8	B-00-0392	PRESSURE SPRING D 5	
9	B-00-0261	SCREW TC+ A2 M3x12 DIN7985	
10	B-00-0135	NUT M3 UNI5588	
11	B-00-0321	PARYLENE MAGNET Ø1.81x4.5	
12	B-MC-1546	STEAM TAP LEVER KNOB	TO ORDER SEPARATELY
12 a	B-MC-1546-0 *	STEAM TAP LEVER KNOB OAK	TO ORDER SEPARATELY
12 b	B-MC-1546-WN *	STEAM TAP LEVER KNOB WALNUT	TO ORDER SEPARATELY
13	B-MC-3007	STEAM TAP LEVER ARM	
14	B-00-0299	GRUB SCREW M6x16 DIN916	



ITEM	CODE	DESCRIPTION	NOTE
	A-MC-3003	ASSEMBLED UNIT 230V	
1	B-MC-0034	GROUP BODY	
2	B-MC-1617	SHOWER HOLDER H12.5 INOX	
2a	B-MC-1628 *	SHOWER HOLDER H14 INOX	TO ORDER SEPARATELY
2b	B-MC-1624 *	SHOWER HOLDER H10 INOX	TO ORDER SEPARATELY
3	B-00-0054	SCREW TE A2 M5X20 DIN933	FOR SHOWER HOLDER H12,5/14/TO ORDER SEPARAT.
3a	B-00-0205 *	SCREW TE A2 M5x16 DIN933	FOR SHOWER HOLDER H10/TO ORDER SEPARAT.
4	B-MC-0039	SHOWER	
4a	B-MC-0461 *	SHOWER SCREEN	TO ORDER SEPARATELY
4b	B-MC-0039A *	NANOTECHNOLOGY SHOWER	TO ORDER SEPARATELY
5	B-MC-0128	GASKET H7 70/75 SH	
5a	B-MC-0468 *	GASKET H7,7 70/75 SH	
5b	B-MC-0470 *	GASKET H6.5 68X54 W/NOTCHES	
5c	B-MC-0714 *	GASKET H7 85 SH HNBR BLACK	
5d	B-MC-0269 *	GASKET DEPTH TH. 0.5	
6	B-MC-0004	GROUP BELL	
7	B-00-0034	OR 3375/BS 154 94,92x2,62	
8	B-MC-0003	GROUP HEAT ELEMENT 230V 850	
9	B-00-0109	SCREW TCEI A2 M6x16 DIN912	
10	B-00-0070	SOL. VALVE 3-WAY 230V STRIP	
11	B-00-0024	SAFETY THERMOSTAT 1F 16A	
12	B-00-0130A	L-COUPLING 237 D6 1/8"	
13	B-MC-0091	GROUP INNER PIPE	
14	B-00-0046A	OR 11,30 x 2,40 FPM-FDA/70.vd	
15	B-MC-0211	GROUP HEATING ELEMENT PROTECTION	TO ORDER SEPARATELY
16	B-MC-1132	TEMPERATURE PROBE PT1000 1/8"	
17	B-00-0100	OR 2015/BS 007 3,68x1,78	
18	B-00-0110	SCREW TCEI A2 M4x10 DIN912	
19	B-00-0036	OR 105 VITON SOLENOID VALVE GR	

ITEM	CODE	DESCRIPTION	NOTE
1	B-MC-3033	UPPER FRONT PANEL	
2	B-MC-3037	GROUP COVER	
3	B-MC-3038	RIGHT FRONT FLANGE	
4	B-MC-3039	LEFT FRONT FLANGE	
5	B-MC-3040	HOLE LEVER COVER	
6	B-00-0123	SELF-TAPPING SCR. TC+ 2,9 x 9,5	
7	B-00-0122	SCREW TSP 2,9x9,5 DIN7982 INOX	





ITEM	CODE	DESCRIPTION	NOTE
1	B-MC-3034	FINISHING FRONTAL	
2	B-00-0295	SCREW TBEI A2 M4x8 UNI7380	
3	B-MC-3026	RIGHT TOP COVER	
4	B-00-0383	FAIRLEAD PG18 UL V0	
5	B-MC-3025	LEFT TOP COVER	
6	B-MC-3044	FINISHING REAR	
7	B-00-0249	SCREW TC- M4 x 12	
8	A-MC-3010	COMPLETE TRAY	See Detail Sheet 18
9	B-00-0349	NEUTRAL BOTTLE 4 L	
10	B-00-0350	NEUTRAL BOTTLE CAP 4 L	
11	B-00-0082	SILICONE PIPE 5x10	FOR LOAD MOTOR PUMP (AT METER)

DALLA CORTE
SPARE PARTS CATALOGUE
STUDIO

DESCRIPTION
MACHINE KIT COMPLETION

ASSEMBLY CODE

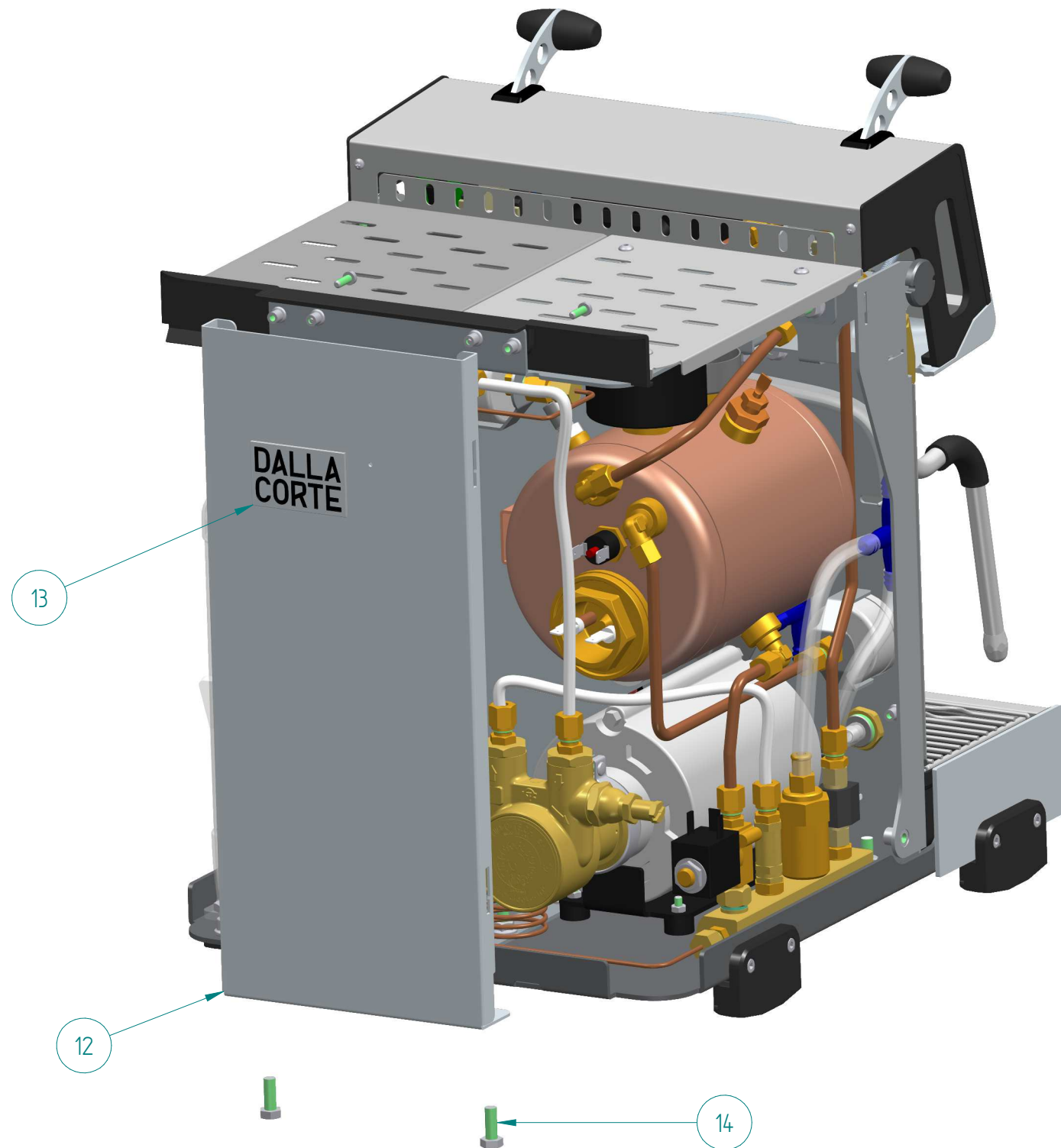
REV
07

EMISSION DATE
OCTOBER

NOTE:
* ALTERNATIVE TO THE REPRESENTED COMPONENT

SHEET
15

ITEM	CODE	DESCRIPTION	NOTE
12	B-MC-3031	REAR STEEL PANEL	
13	B-MC-0698A	MEDIUM DALLA CORTE PLATE 53,5x33	
14	B-00-0103	SCREW TE 8.8 M6x16 DIN933	



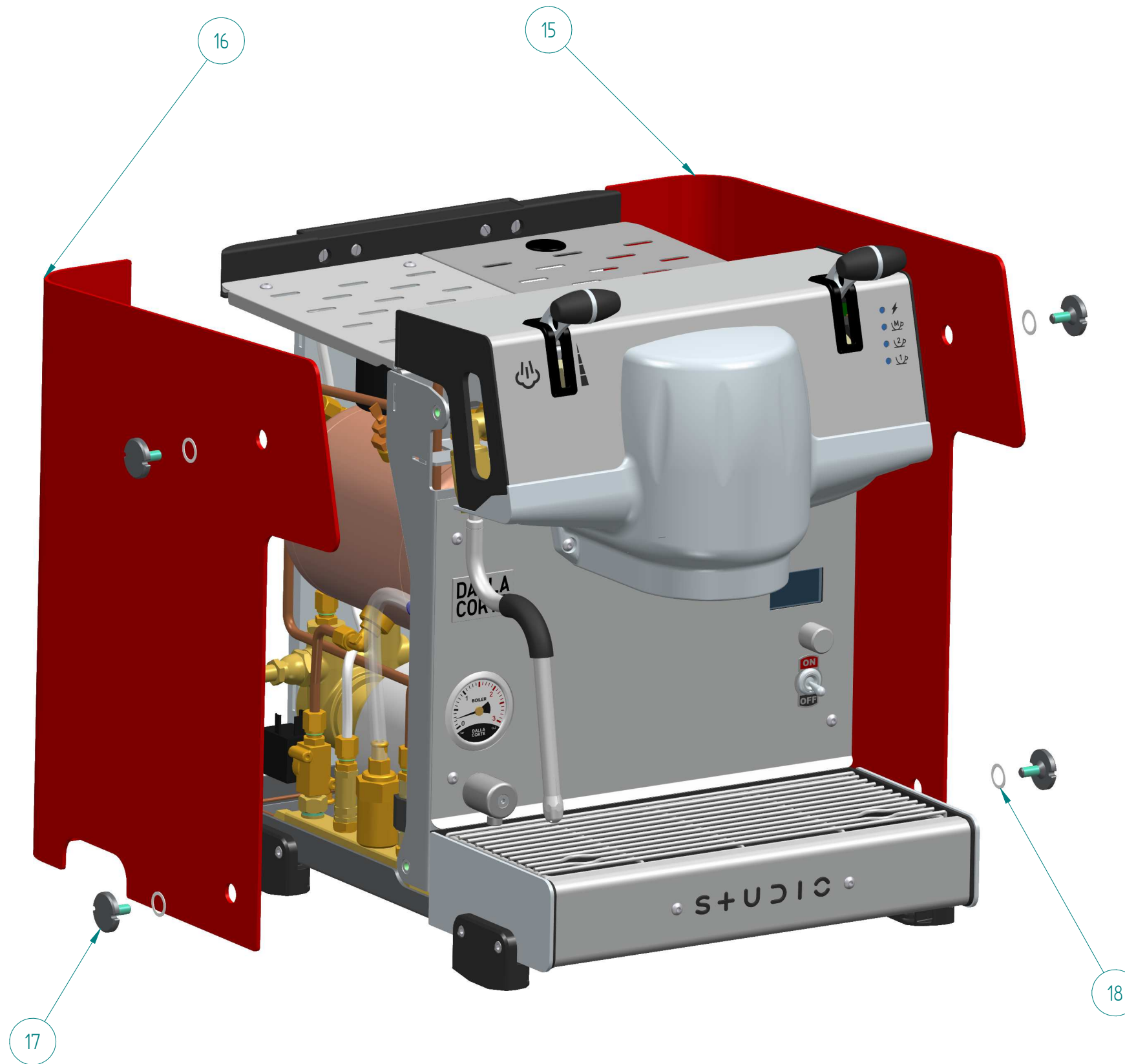
DALLA CORTE
SPARE PARTS CATALOGUE
STUDIO

DESCRIPTION	REAR FINISH
ASSEMBLY CODE	

REV	07
EMISSION DATE	OCTOBER

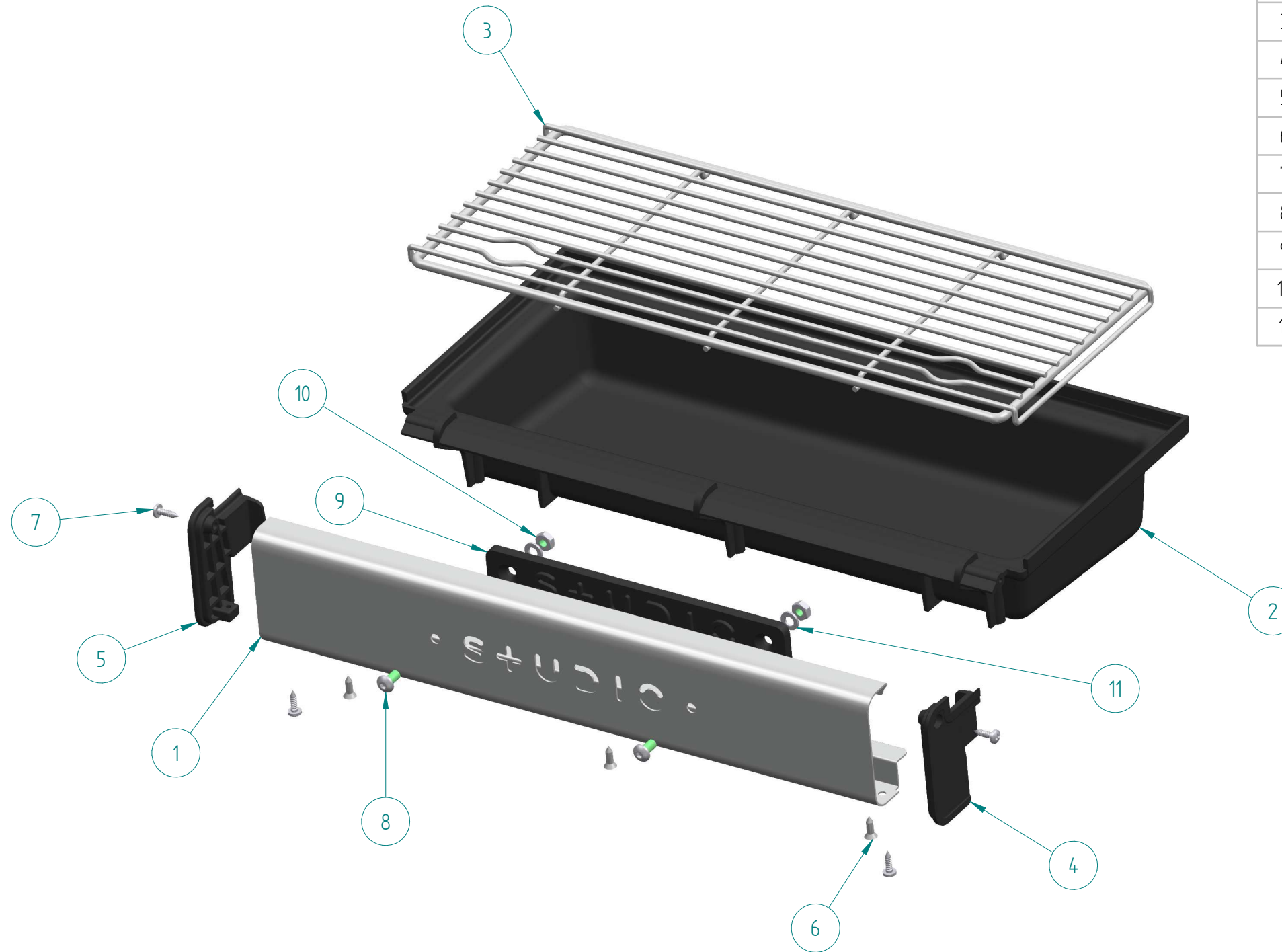
NOTE:	* ALTERNATIVE TO THE REPRESENTED COMPONENT
-------	--

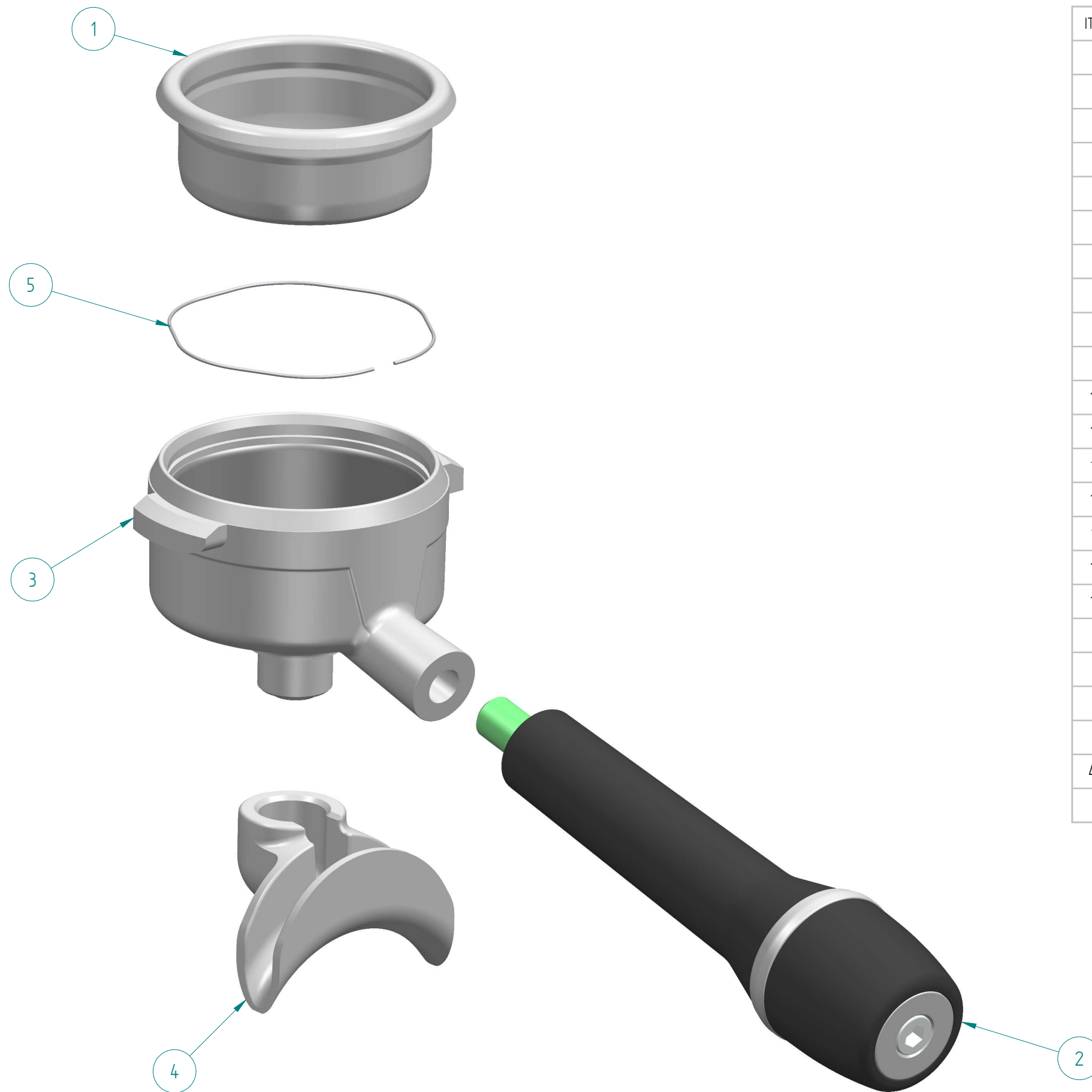
SHEET	16
-------	----



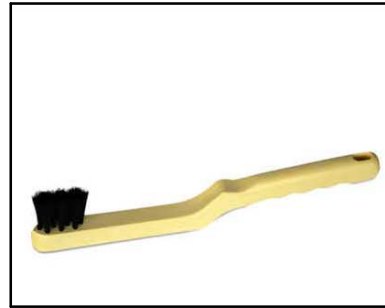
ITEM	CODE	DESCRIPTION	NOTE
15	B-MC-3029A-BR	RIGHT SIDE BLAZE RED RAL 3020	
15 a	B-MC-3029-D *	RIGHT SIDE DARK RAL 9004	
15 b	B-MC-3029-IB *	RIGHT SIDE ICE BLUE RAL 5024	
15 c	B-MC-3029-MG *	RIGHT SIDE MINT GREEN RAL 6019	
15 d	B-MC-3029-MY *	RIGHT SIDE MOON GREY RAL 7005	
15 e	B-MC-3029-W *	RIGHT SIDE WHITE RAL 9003	
15 f	B-MC-3029A-NB	RIGHT SIDE NAVY BLUE	
15 g	B-MC-3029A-NX	RIGHT SIDE STEEL	
16	B-MC-3030A-BR	LEFT SIDE BLAZE RED RAL 3020	
16 a	B-MC-3030-D *	LEFT SIDE DARK RAL 9004	
16 b	B-MC-3030-IB *	LEFT SIDE ICE BLUE RAL 5024	
16 c	B-MC-3030-MG *	LEFT SIDE MINT GREEN RAL 6019	
16 d	B-MC-3030-MY *	LEFT SIDE MOON GREY RAL 7005	
16 e	B-MC-3030-W *	LEFT SIDE WHITE RAL 9003	
16 f	B-MC-3030A-NB	LEFT SIDE NAVY BLUE	
16 g	B-MC-3030A-NX	LEFT SIDE STEEL	
17	B-MC-3032	PANEL FIXING STUD	
18	B-MC-3059	SIDE STUDIO GASKET	

ITEM	CODE	DESCRIPTION	NOTE
	A-MC-3010	COMPLETE TRAY	
1	B-MC-3021	FRONTAL TRAY	UNABLE TO ORDER
2	B-MC-3041	TRAY	UNABLE TO ORDER
3	B-MC-3023	TRAY GRID	TO ORDER SEPARATELY
4	B-MC-3042	RIGHT CAP TRAY	UNABLE TO ORDER
5	B-MC-3043	LEFT CAP TRAY	UNABLE TO ORDER
6	B-00-0122	SCREW TSP 2,9x9,5 DIN7982 INOX	UNABLE TO ORDER
7	B-00-0123	SELF-TAPPING SCR. TC+ 2.9 x 9,5	UNABLE TO ORDER
8	B-00-0295	SCREW TBEI A2 M4x8 UNI7380	UNABLE TO ORDER
9	B-MC-3048	STUDIO LOGO PLATE	UNABLE TO ORDER
10	B-00-0121	NUT M4 DADO M4 UNI 5588 ZN	UNABLE TO ORDER
11	B-00-0274	PLAIN WASHER M4 ZN DIN 9021	UNABLE TO ORDER





ITEM	CODE	DESCRIPTION	NOTE
	A-MC-1027C	COMPLETE 2-CUPS PORTAFILTER	
	B-MC-1171A *	PORTAFILTER NAKED D54	
	A-MC-1520-0 *	NAKED D54 PORTAFILTER OAK	
	A-MC-1520-WN *	NAKED D54 PORTAFILTER WALNUT	
	A-MC-1529A-0 *	2-CUP PORTAFILTER OAK	
	A-MC-1529A-WN *	2-CUP PORTAFILTER WALNUT	
	A-MC-1028C *	COMPLETE 1-CUP PORTAFILTER	
	A-MC-1530A-0 *	1-CUP PORTAFILTER OAK	
	A-MC-1530A-WN *	1-CUP PORTAFILTER WALNUT	
1	B-MC-0409C	2 CUP FILTER H24 (<14gr)	
1a	B-MC-0041B *	2 CUP FILTER H26 (14-15gr)	
1b	B-MC-0394C *	2 CUP FILTER H28 (15-18gr)	
1c	B-MC-0432B *	2 CUP FILTER H32 (21gr-)	
1d	B-MC-0729B *	2 CUP FILTER H30 (18-21gr)	
1f	B-MC-0224 *	BLIND FILTER	
1g	B-MC-0040B *	1 CUP FILTER H25 (7-9gr)	
1h	B-MC-0271B *	1 CUP FILTER H23 (6-7gr)	
1i	B-MC-0686B *	1 CUP FILTER H27 (9-10gr)	
2	B-MC-1111	FILTER HOLDER KNOB	
3	A-PC-0007	COATED PORTAFILTER BODY D54	
4	B-MC-0078	CHROMED 2-SHOT SPOUT	
4a	B-MC-0077 *	CHROMED 1-SHOT SPOUT	
5	B-00-0415	PORTAFILTER SPRING 1.1	



B-MC-0194
BRUSH CLEANING SHOWERS

1-PC-083
TAMPING MAT



B-MC-0225
KEY FOR SHOWER SCREW

A-MC-2015
KEY LOCKING HUBCAP



K-0199
STUDIO KIT SPARE PARTS
K-0203
KIT WATER SUPPLY STUDIO

B-MC-0404
GROUP CLEANER BOX 120 TABLETS



K-0193
BARISTA KIT

B-MC-0478A
STAINLESS STEEL TAMPER D 54,5
B-MC-0478A-O
STAINLESS STEEL TAMPER +OAK D 54,5
B-MC-0478A-WN
STAINLESS STEEL TAMPER +WALNUT D 54,5

