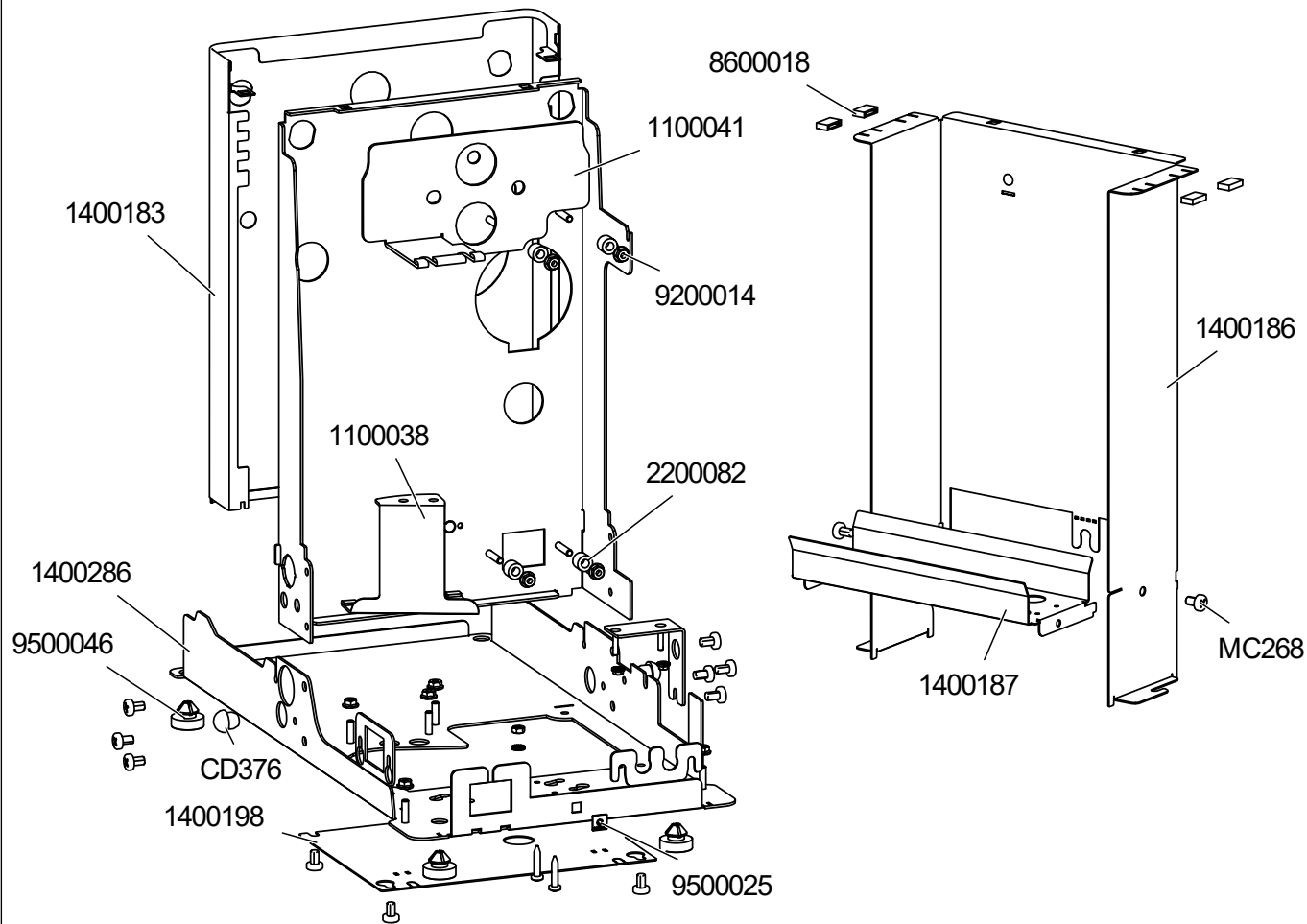


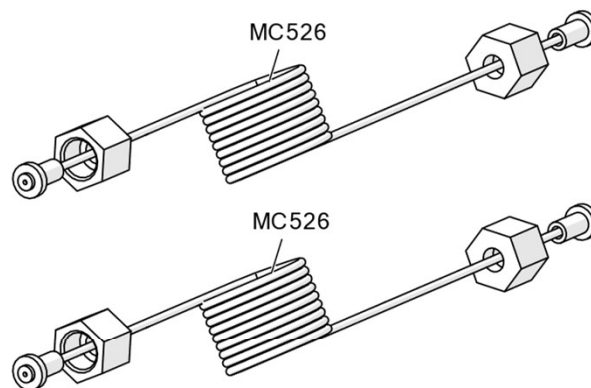
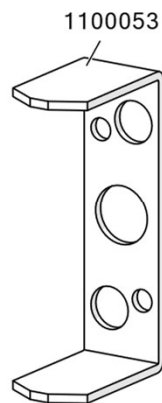
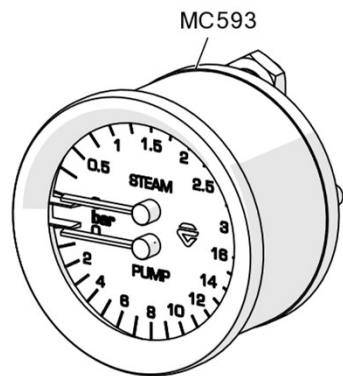
MaraX PL62X

Technical Documentation

COD. 520000TC

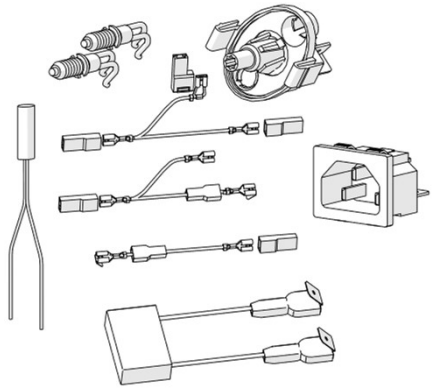


CODE	DESCRIPTION
1100038	BOILER SUPPORT
1100041	REINFORCEMENT PLAQUE FOR L58E GROUP
1400183	PL62X MACHINE FRONT PANEL
1400186	PANNEL FOR WATER TANK PROTECTION
1400187	WATER TANK SUPPORT
1400198	INSPECTION COVER
1400286	BASE
2200082	SPACER
8600018	RUBBER SUPPORTING FOR DRIP TRAY GRATE
9500025	PLASTIC SCREW H0,8 L4,5
9500046	RUBBER DYN FOOT
CD376	RUBBER SPACER
MC268	SCREW 5X8

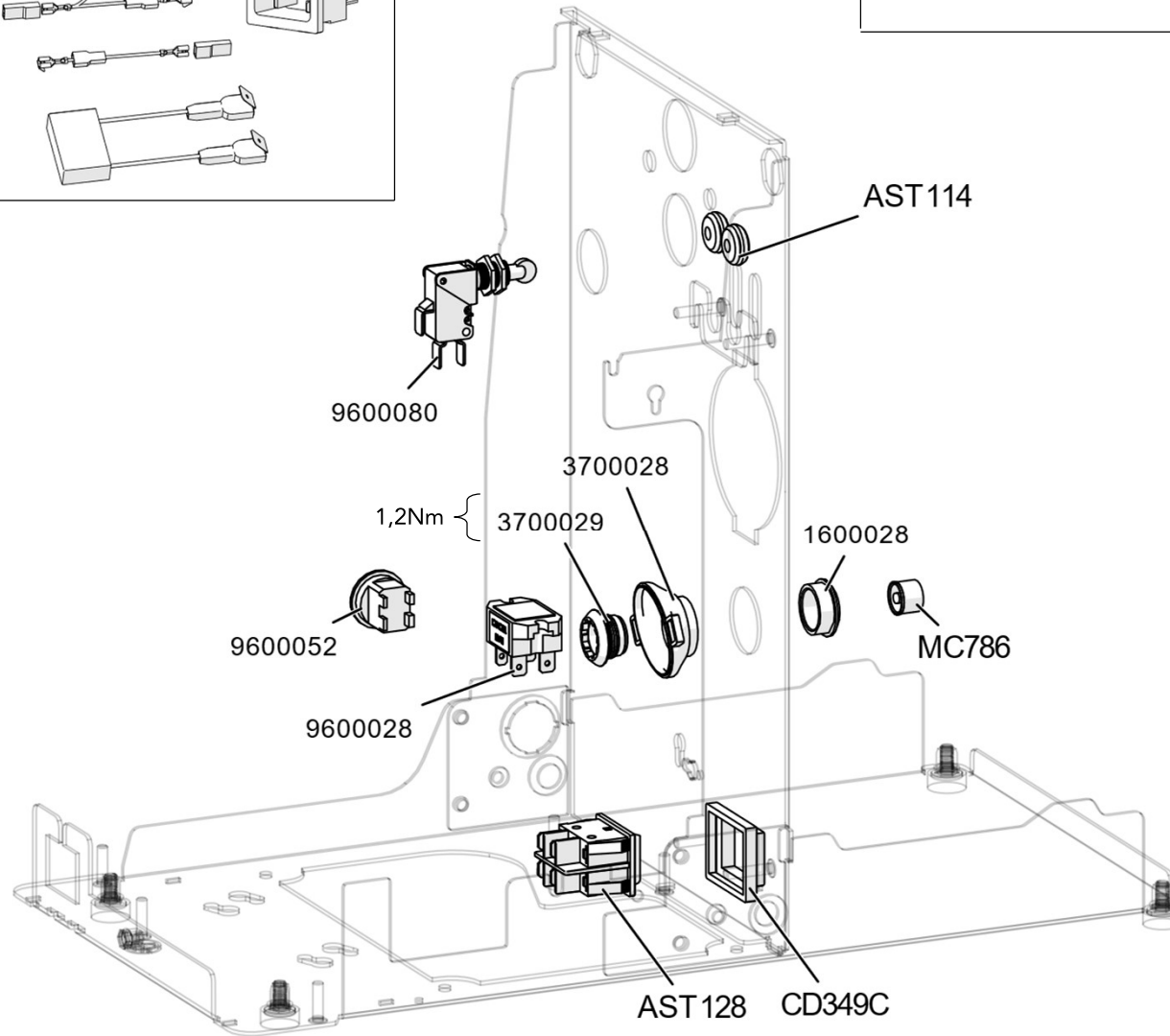
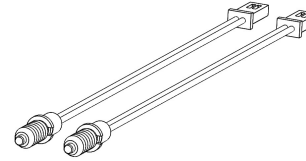


CODE	DESCRIPTION
1100053	BRACKET FOR FIXING THE MANOMETER
MC526	CAPILLARY I.800
MC593	DOUBLE MANOMETER FOR PUMP/STEAM PRESSURE

ASSEMBLY CODE: 300048



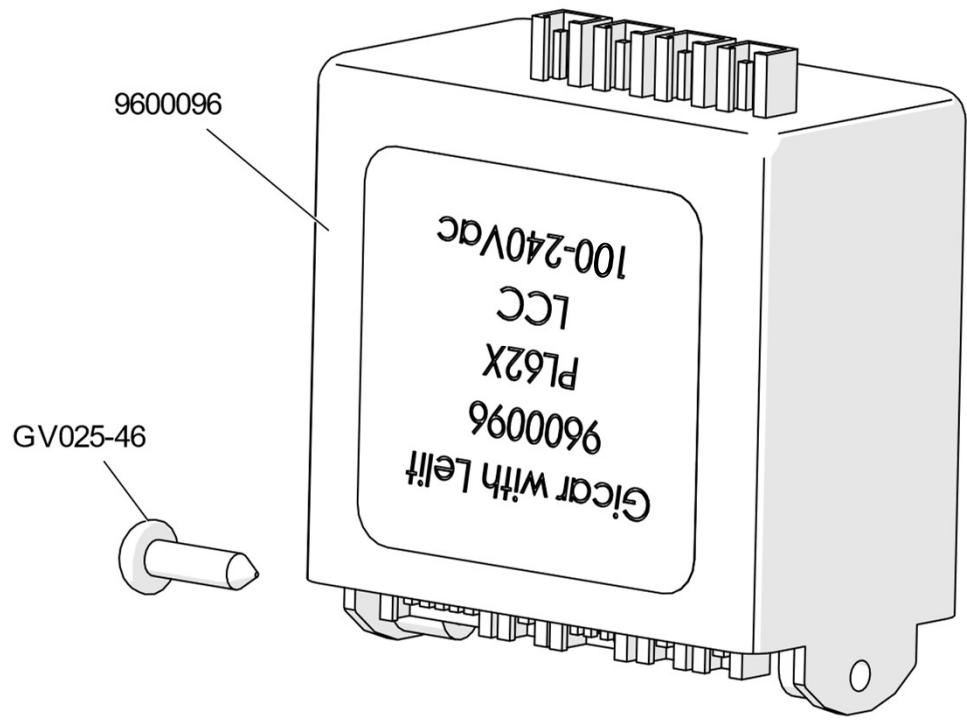
4000026

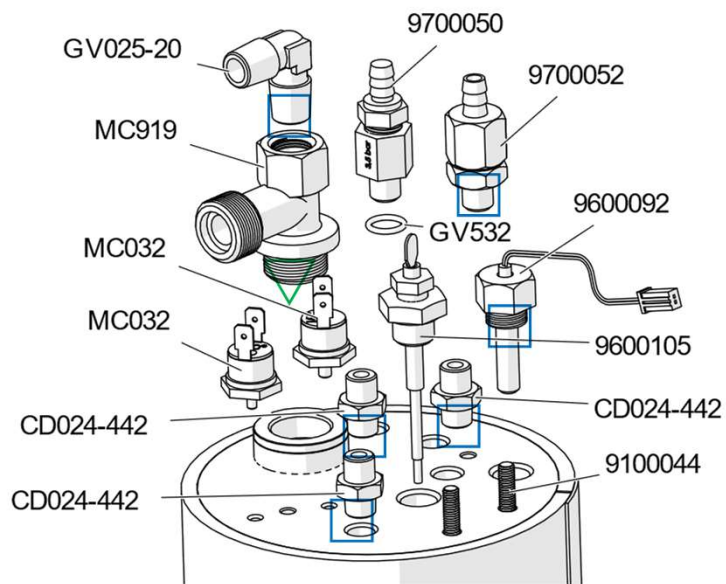


CODE	DESCRIPTION
1600028	SUPPORT FOR BACK LIT SWITCH
3000048	WIRING
3700028	PLASTIC SUPPORT FOR SWITCH
3700029	OPALESCENT INSERT
4000026	LIGHT KIT FOR PL62X
9600028	RELAY 18V
9600052	ROUND MAIN SWITCH
9600080	MICRO SWITCH
AST114	SILICONE FAIRLEAD Diam.i5 - Diam.e16 - H7 50Sh
AST128	SWITCH FOR BLOWING/VACUUM FUNCTION
CD349C	SWITCH COVER
MC786	STAINLESS STEEL BUTTON

ATTENTION! As indicated in the parts diagram, the code 3700029 must be screw at 1,2 Nm!

CODE	DESCRIPTION
9600096	P.C BOARD 100-240Vac
GV025-46	SCREW

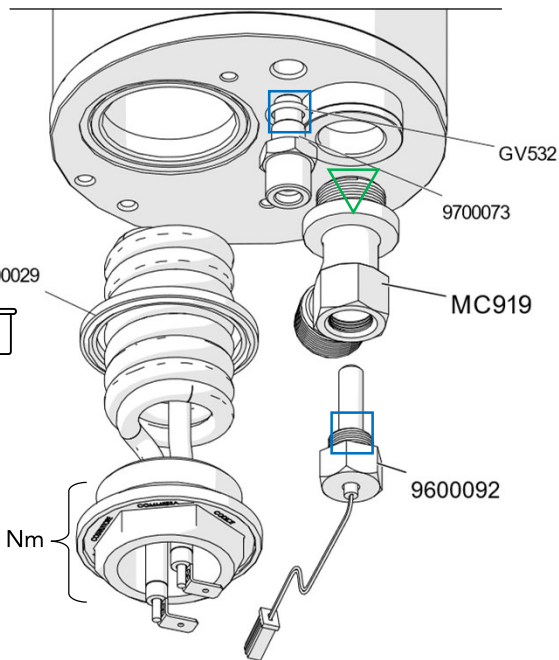




▽ = use sealant Loxeal 85-86 (COD. 9500050)

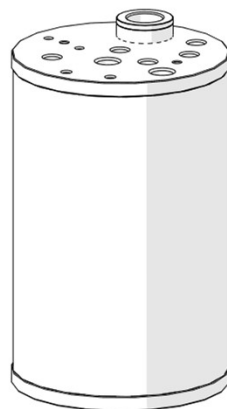
□ = use sealant Loxeal 55-03 (COD. 9500051)

☐ = code with related instructions

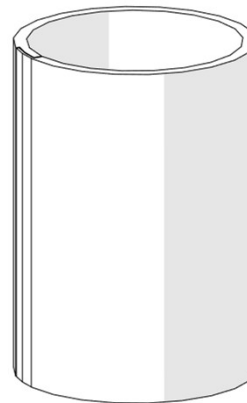


FOR SAFETY REASONS WHEN YOU CHANGE THE HEATING ELEMENT YOU MUST ALSO CHANGE THE GASKET (ASSEMBLY CODE 4000028)

CODE: 2000020



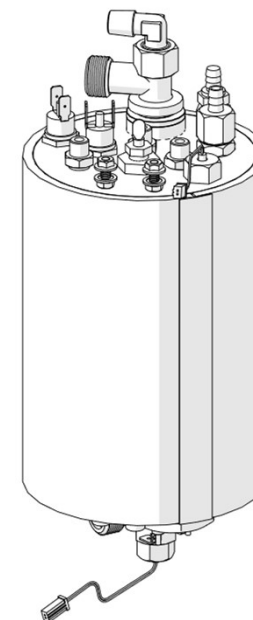
CODE: 8300008

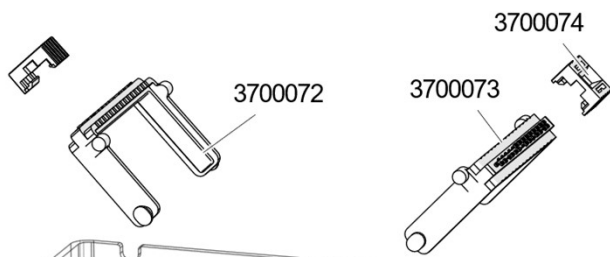


CODE	DESCRIPTION
2000020	STAINLESS STEEL BOILER 1,8L
8300008	BOILER INSULATION MATERIAL
8700012	GASKET 1 " 1/4
9100044	GRUB SCREW M5x20 UNI 5923 INOX A2
9600092	NTC TEMP. PROBE
9600105	LEVEL PROBE 85MM
9700040	FITTING 1/4G x 1/8G
9700050	SAFETY VALVE 3BAR
9700052	ANTI-VACUUM VALVE
9700073	NIPPLE FITTING
CD024-442	FITTING M/M 1/8G
GV025-20	L JOINT M1/4 - M1/4
GV532	O-RING
MC032	165°C SAFETY THERMOSTAT
MC919	FITTING 1/2 "
4000028	SPARE KIT HEATING ELEMENT MC920 & GASKET 8700012
4000029	SPARE KIT GASKET 8700012
4000031	SPARE KIT COMPLETE BOILER 230V

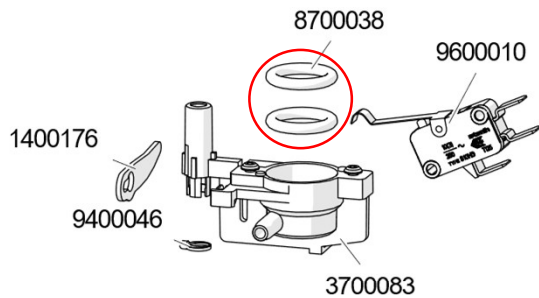
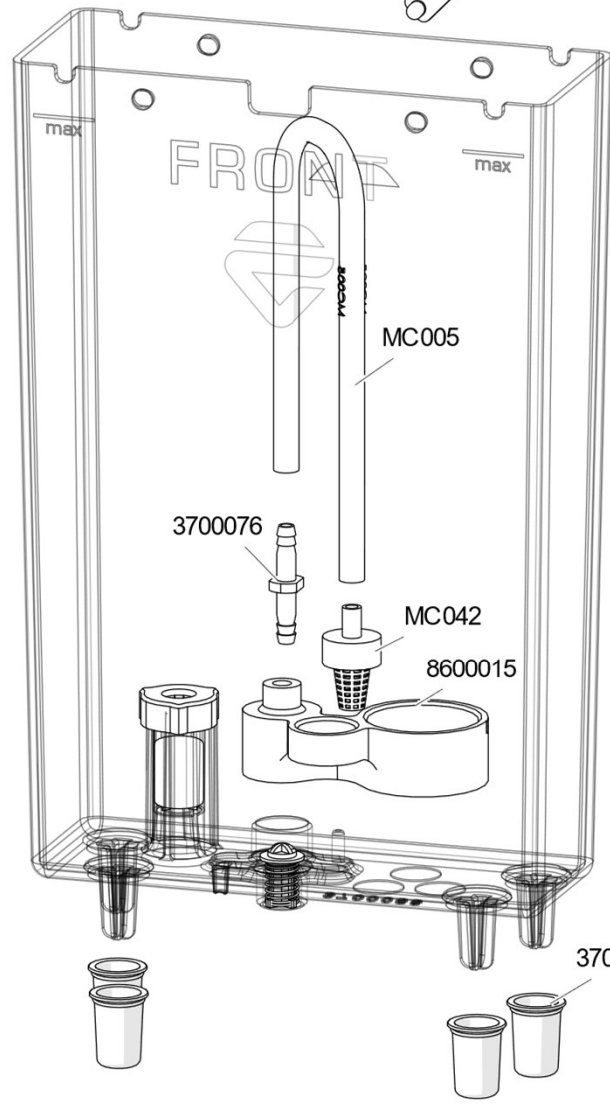
ATTENTION! As indicated in the diagram, the heating element must be screwed in at 100 Nm. Be sure you have the correct equipment to assemble the part before you buy it.

ASSEMBLY CODE: 4000031



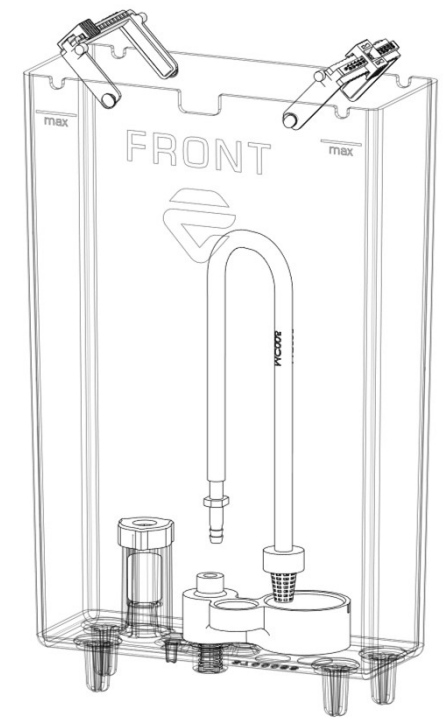


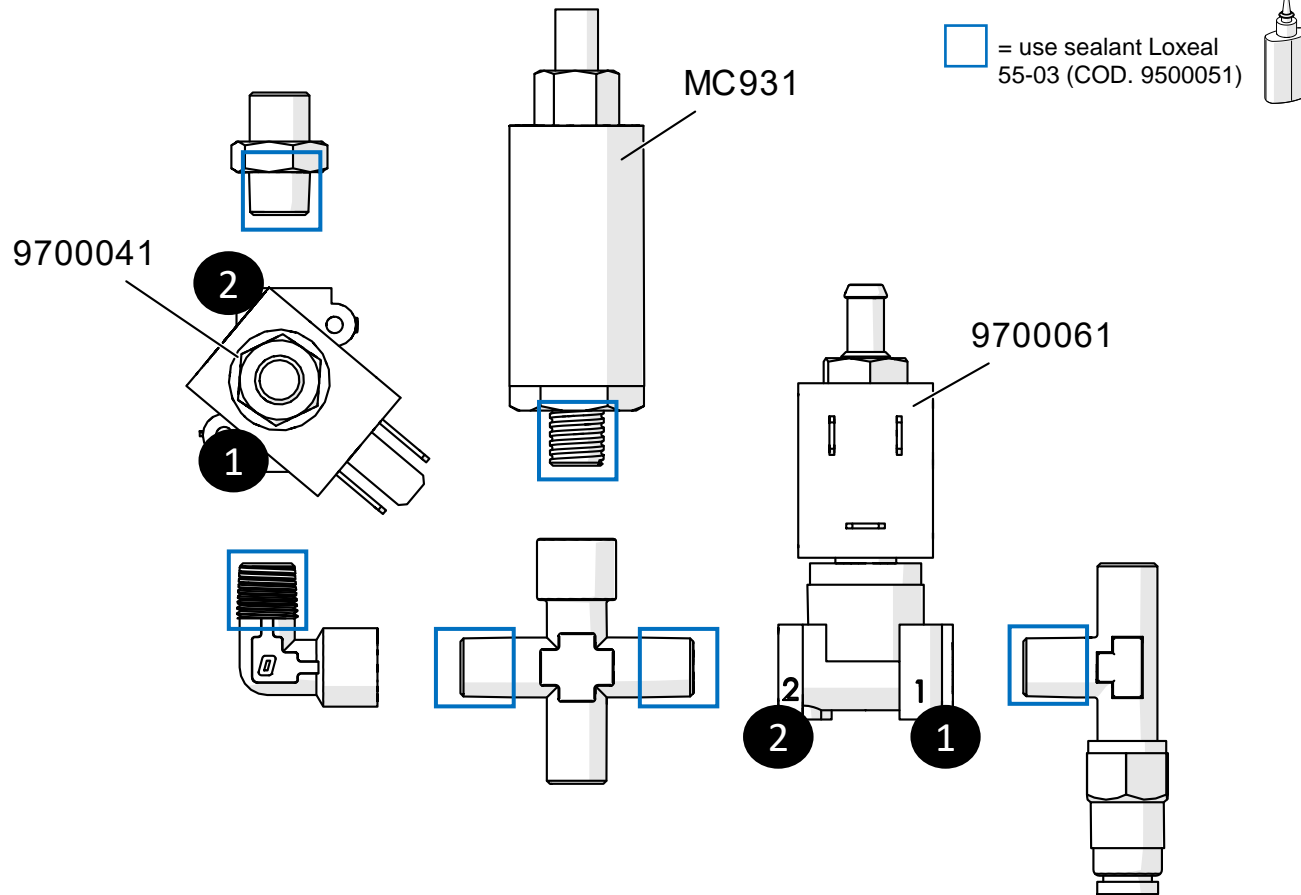
○ = use grease Molycote G-1502 (COD. 9500049)



CODE	DESCRIPTION
1400176	MICROSWITCH LEVER
3700072	NUMBERED HANDLE 0-14
3700073	NUMBERED HANDLE 15-28
3700074	REFILLS MANUAL COUNTER
3700075	TANK GUIDE WITH AUTOMATIC GRAFT
3700076	TUBE JOINER
3700083	TANK COUPLING CHAMBER
8600015	SUPPORT FOR FILTER AND RESIN FILTER
8700038	RED SILICONE GASKET
9400046	SPRING CLAMP Diam.7,3
9600010	MICRO SWITCH- PRESENCE WATER TANK
MC005	SILICONE HOSE 4x8 L42cm
MC042	WATER FILTER
4000036	SPARE KIT COMPLETE WATER TANK

ASSEMBLY CODE: 4000036

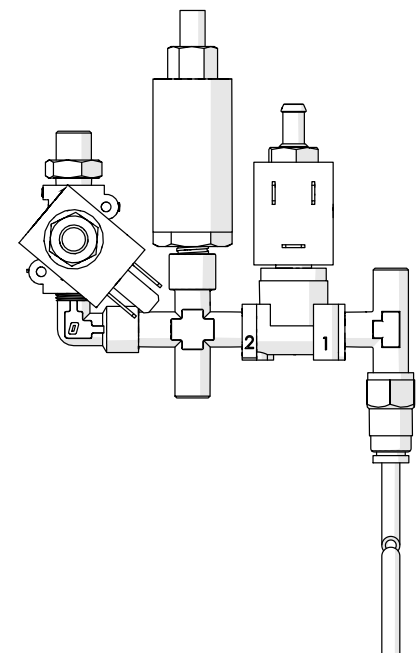




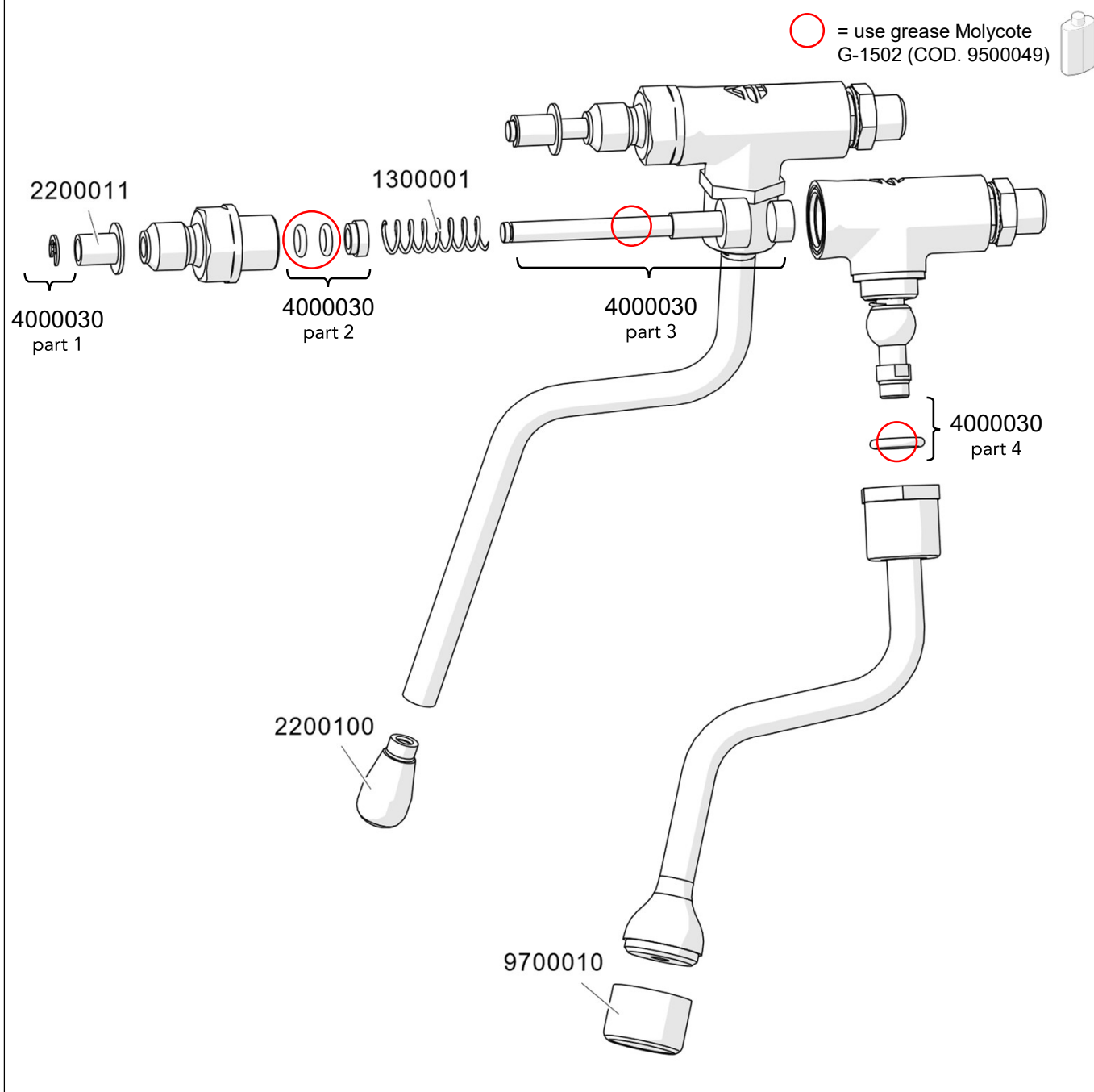
CODE	DESCRIPTION
9700041	2-WAY SOLENOID VALVE 9000 230V
9700061	3WAY SOLENOID VALVE S9000A DN1,5
MC117-220	PTFE TUBE Øe5 sp1 L=110
MC931	EXPANSION VALVE
4000035	SPARE KIT CHARGE CIRCUIT 230V

ATTENTION! Holding the solenoid valves and the metal fittings in place during the assembly is a difficult operation for which special equipment and sealants are used. The fittings also have both conical and cylindrical threads. We recommend the purchase of the entire assembly code 4000035.

ASSEMBLY CODE: 4000035



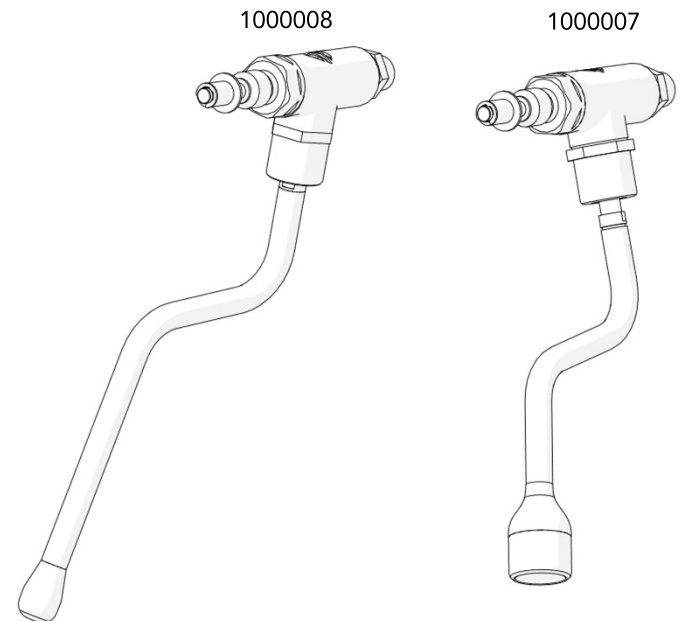
NB: please pay attention to the numbers (1 and 2) marked on the body of the solenoid valves, and reassemble the valves following the direction indicated in the image.

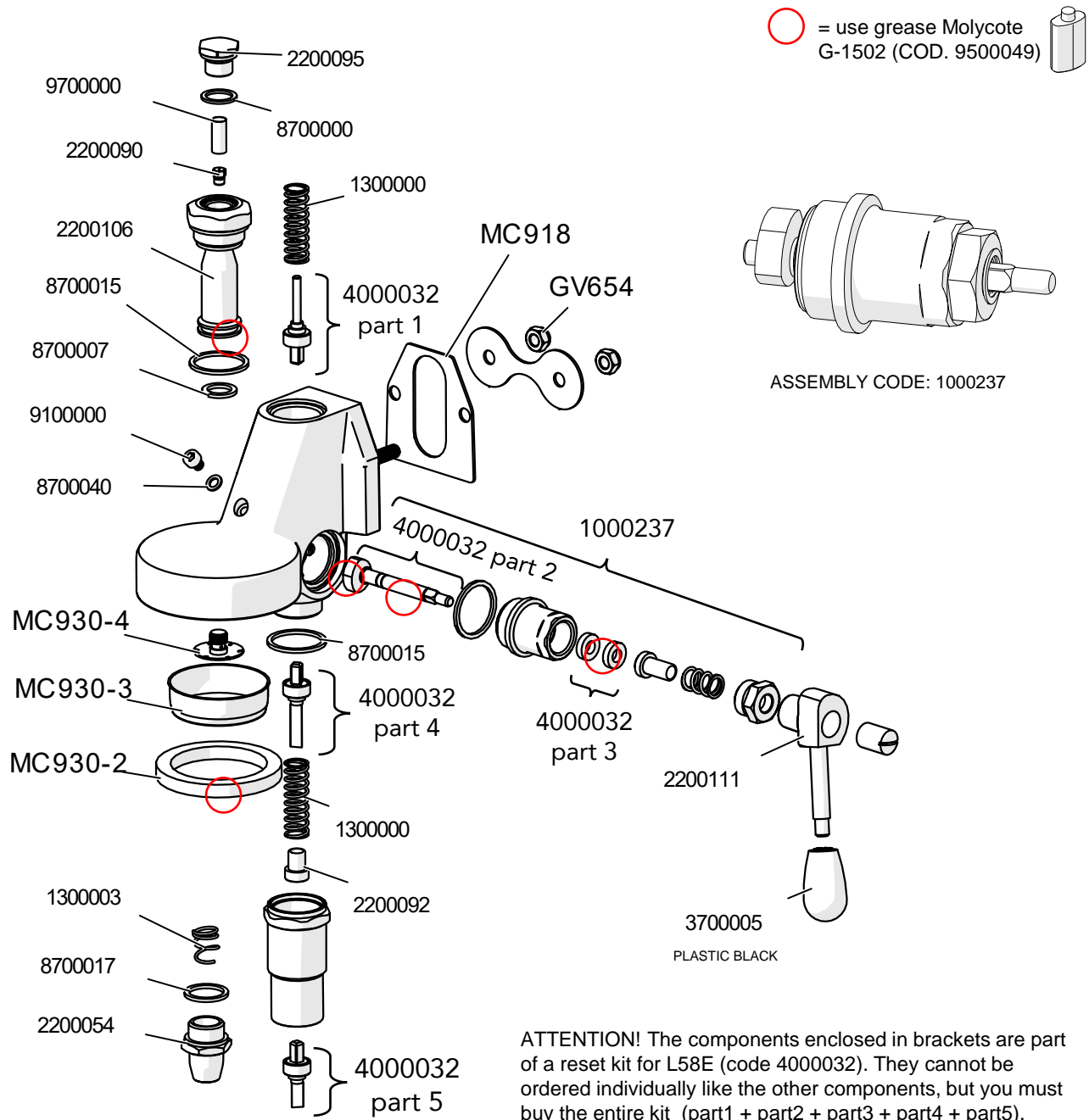


CODE	DESCRIPTION
1000007	WATER TAP WITH SPRING CLOSURE
1000008	STEAM TAP WITH SPRING CLOSURE
1300001	SPRING FOR TAP ON PL6
2200100	NOZZLE WITH 2 HOLES Øi1 30°
9700010	HOT WATER FILTER
2200011	SPACER
4000030	SPARE KIT WATER/STEAM TAP 1000007-1000008

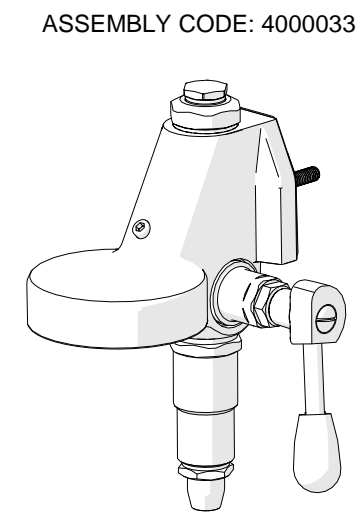
ATTENTION! The components enclosed in brackets are part of a reset kit for wand (code 4000030). They cannot be ordered individually like the other components, but you must buy the entire kit must (part1 + part2 + part3 + part4).
1 kit contains the spare parts for 1 wand reset.

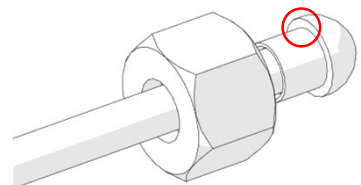
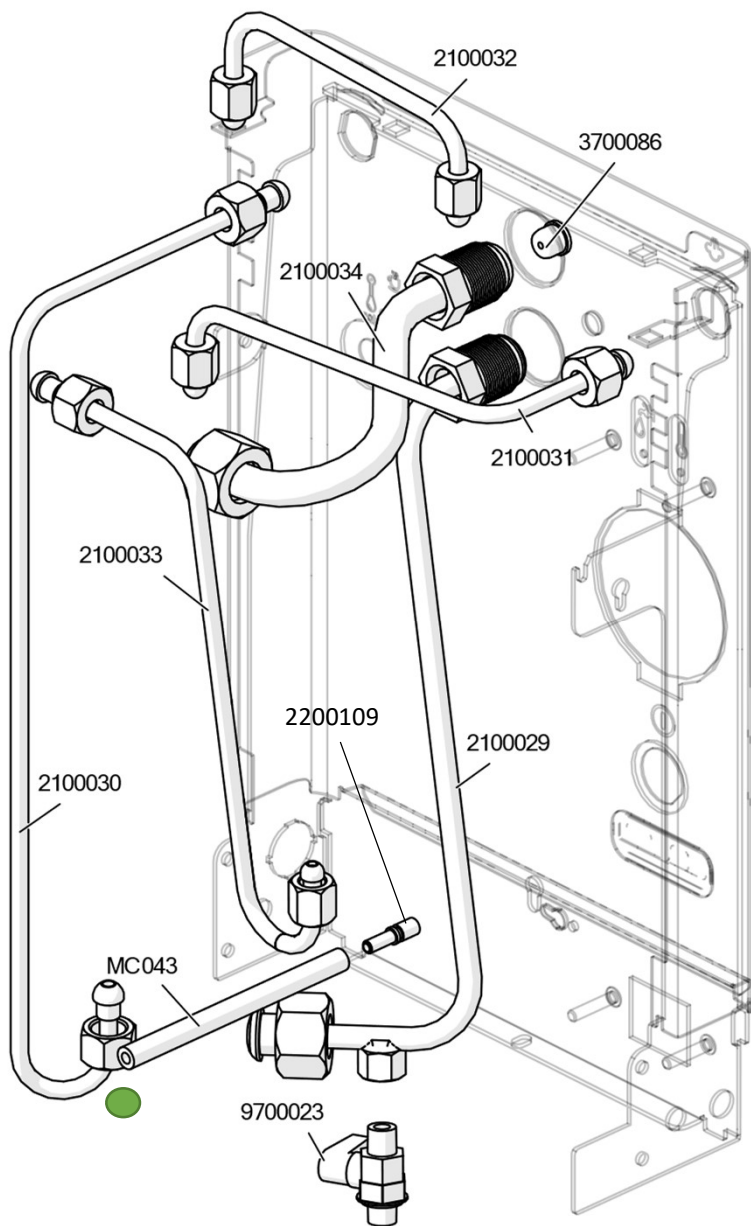
ASSEMBLY CODES



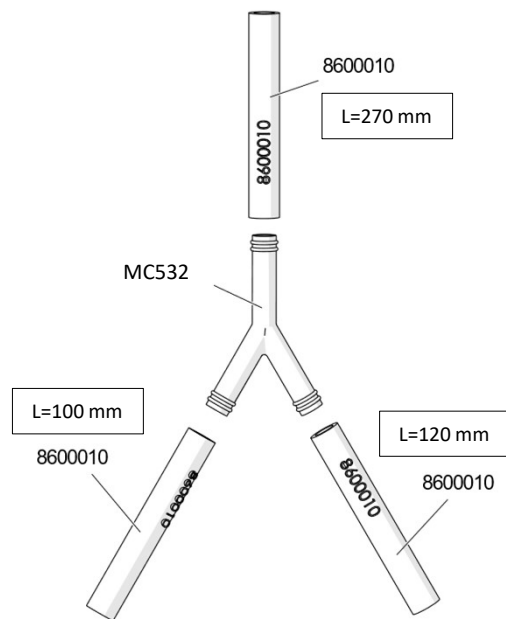


CODE	DESCRIPTION
1000237	CAM ASSEMBLY L58E GROUP
1300000	CAPILLARY I.800
1300003	SPRING D.4 H10
2200054	LOWER JOINT FOR L58E GROUP DISCHARGE
2200090	NOZZLE
2200092	DIAL ON SPRING - L58E GROUP
2200095	CAP M16x1,5 - L58E GROUP
2200106	UPPER STEERER FOR L58E GROUP
2200111	CAM WITH LEVER FOR L58E GROUP
3700005	HANDLE - L58E GROUP
8700000	TEFLON GASKET 3/8"
8700007	GASKET ON WATER DISPENSER Diam.20,5
8700015	PTFE GASKET 35x30x2
8700017	PTFE GASKET 26x21x2 - L58E GROUP
8700040	GASKET PTFE 10x6x1
9100000	SCREW TCEI M6x8 UNI EN 4762 (inox A2)
9700000	FILTER OF UPPER SLEEVE L58E BREWER
GV654	NUT 8M
MC918	GASKET FOR GROUP FLANGE
MC930-2	L58E GROUP GASKET
MC930-3	SHOWER FILTER
MC930-4	SPOUT BREAKER L58E GROUP
4000032	SPARE KIT FOR L58E GROUP
4000033	SPARE KIT COMPLETE GROUP L58E





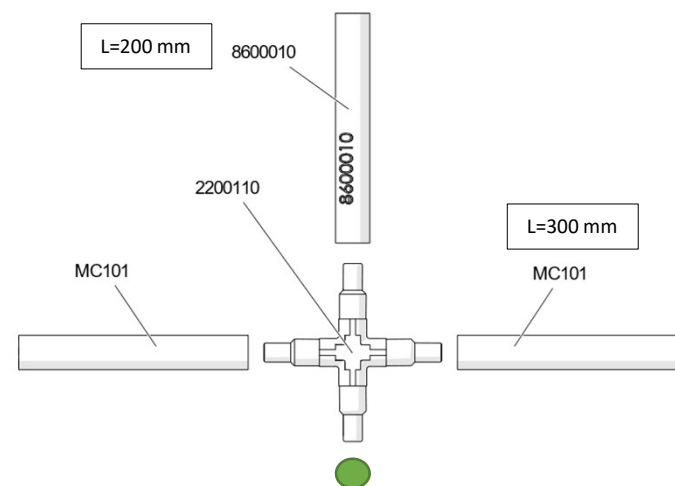
Use grease Molycote G-1502 (COD. 9500049) on the spindles of all copper pipes



CHAMBER VALVE FOR WATER TANK

PUMP

CODE	DESCRIPTION
2100029	LOWER TUBE COFFEE CIRCUIT
2100030	WATER CHARGE TUBE
2100031	STEAM VALVE TAP CONNECTION TUBE
2100032	COPPER TUBE FILLING-UP STEAM BOILER
2100033	COPPER TUBE FILLING-UP STEAM BOILER
2100034	PIPE COFFEE CIRCUIT
2200109	DISCHARGE NOZZLE
2200110	4WAY CROSS FITTING
3700086	GICLEUR PTFE DIAM 2,25
8600010	SILICON HOSE 4X8 L70CM
9700023	TAP MM 1/8
MC043	SILICONE HOSE 4X8 L25CM
MC101	SILICONE HOSE 6X9 40CM
MC117-220	PTFE TUBE Øe5 L=110
MC532	PLASTIC Y JOINT

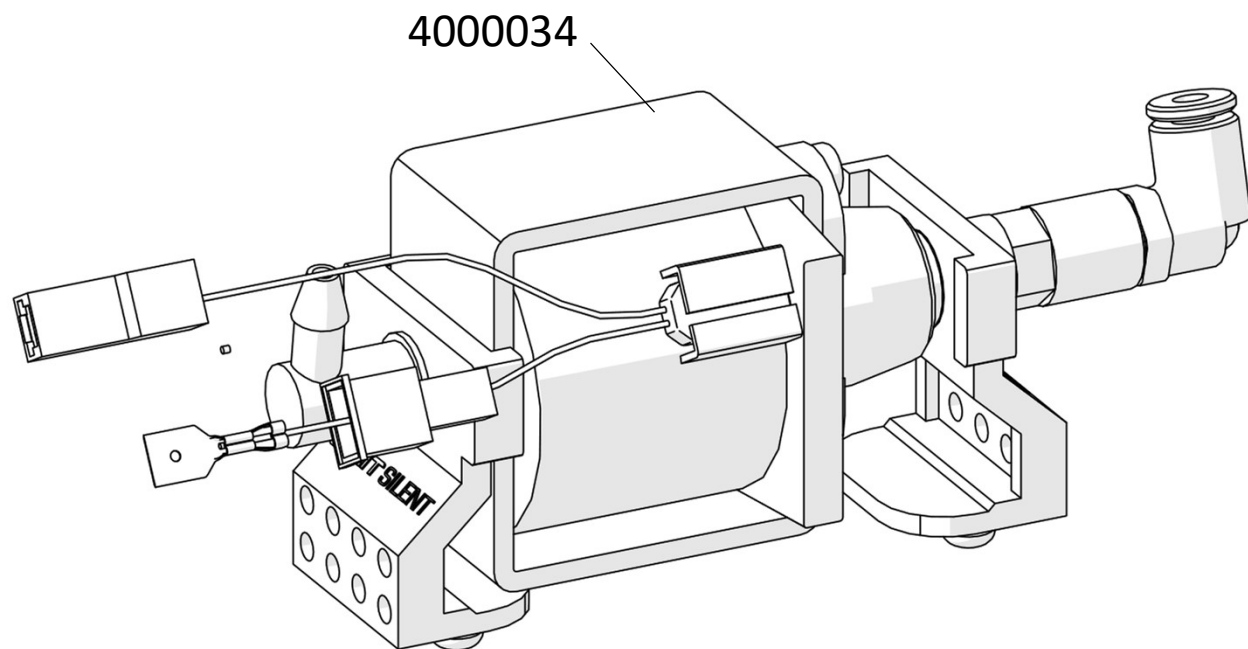


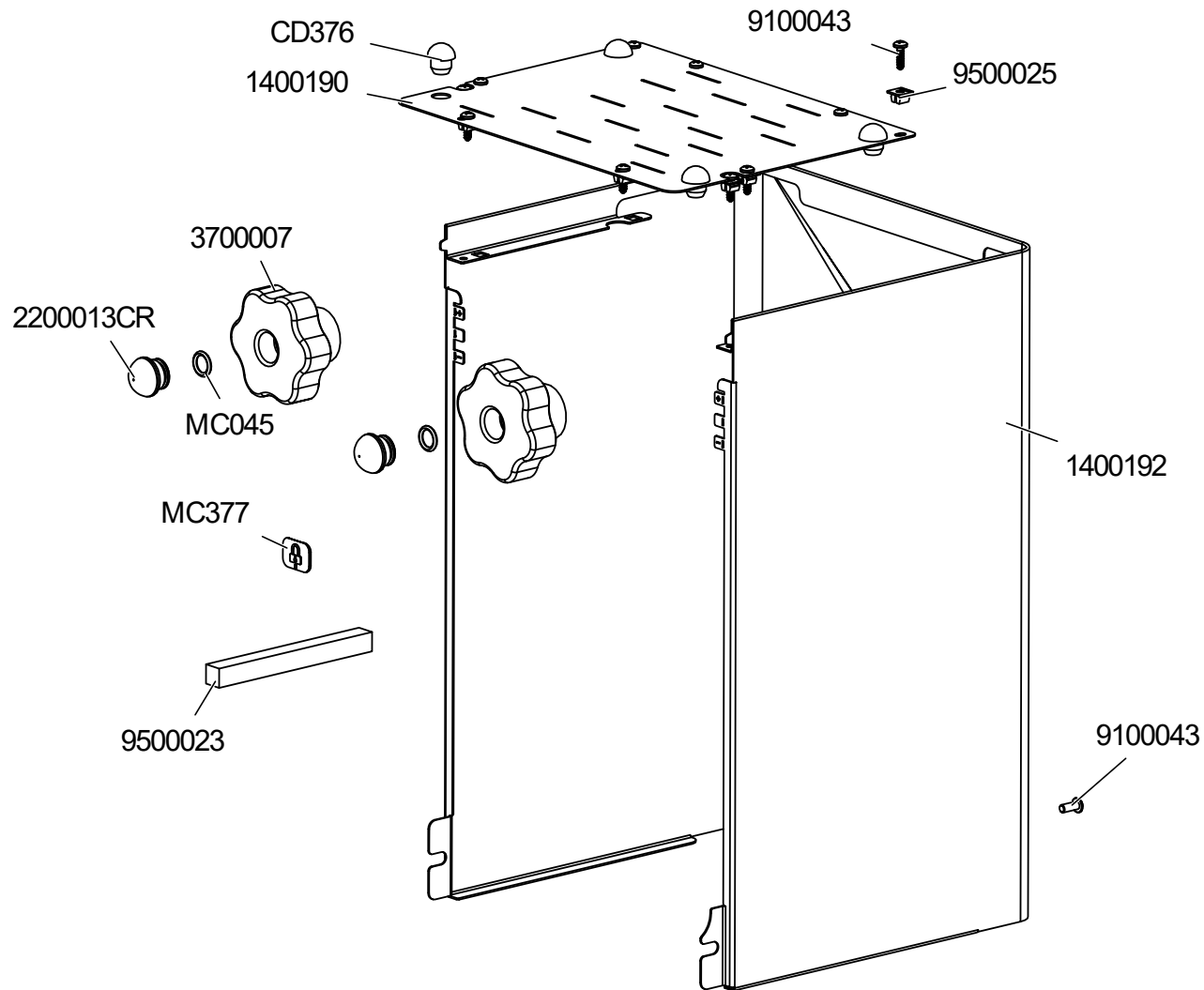
CODE

DESCRIPTION

4000034

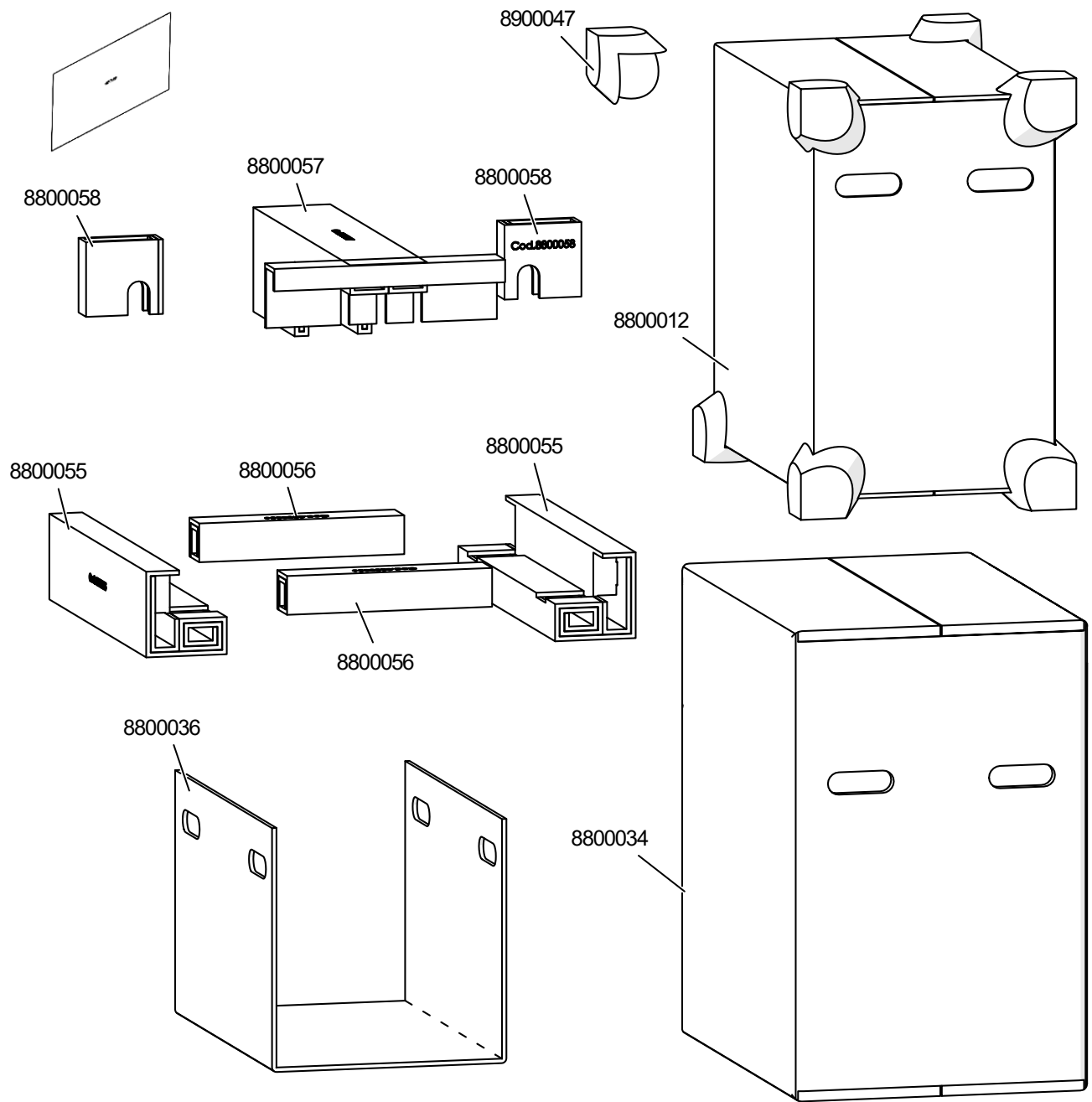
SPARE KIT SILENT PUMP 230V





CODE	DESCRIPTION
1400190	UNIT COVER
1400192	COMPLETE APPLIANCE BODY
3700007	WATER AND STEAM KNOB
9100023	SCREW M4X10
9100043	SCREW 3,5X13 INOX
9500023	ADHESIVE
9500025	PLASTIC SCREW H0,8 L4,5
2200013CR	CHROME CAP FOR KNOB
CD376	RUBBER SPACER
MC045	O-RING 9X2
MC377	LABEL

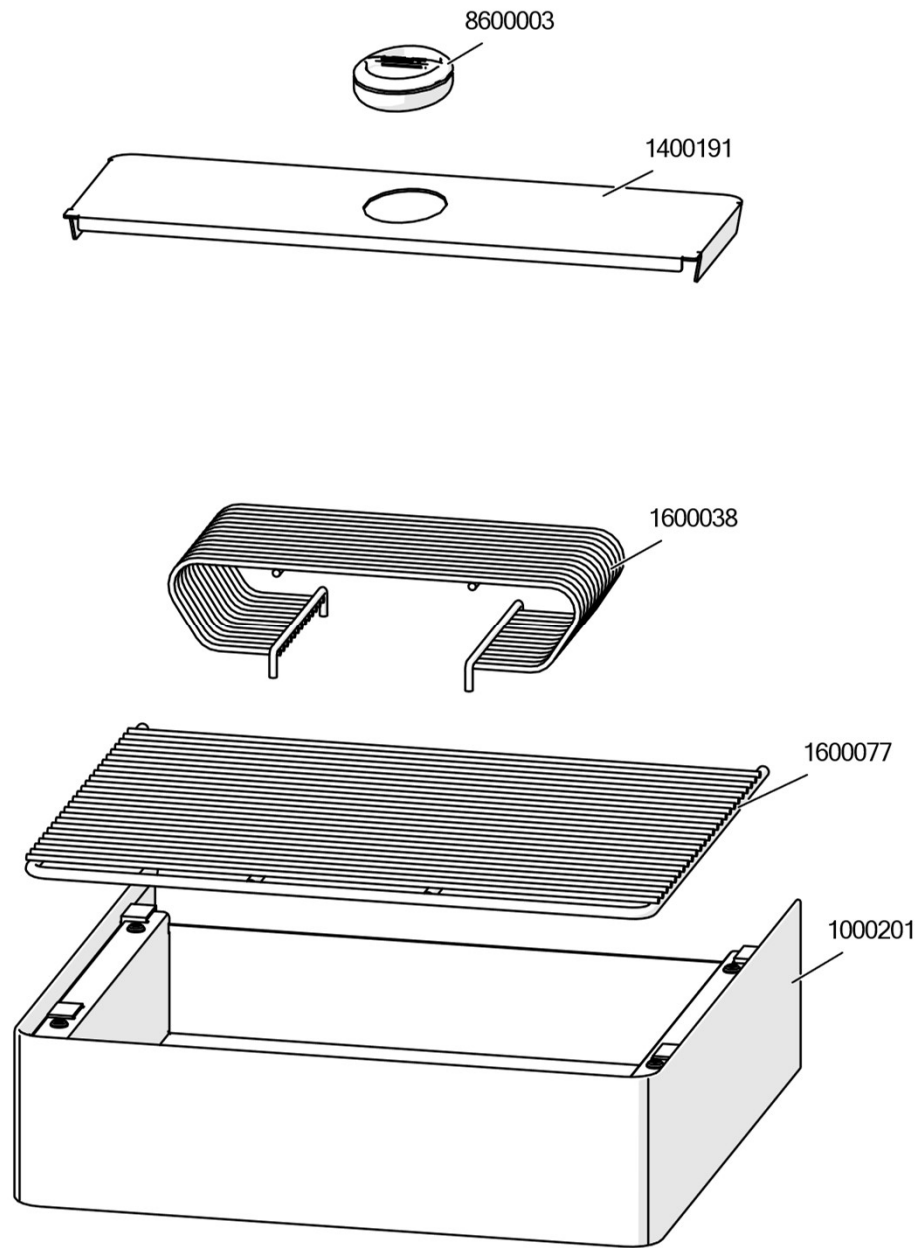
ATTENTION! When you're replacing the knobs on your machine, remember to deposit grease on the wand holder.



CODE	DESCRIPTION
8800012	PL162T-BIANCA PACKAGING/CARTON
8800034	EXTERNAL CARTON FOR PACKAGING PL162
8800036	INTERNAL CARDBOARD SUPPORT FOR PL162T
8800055	LOWER CROSSPIECE - PACKAGING ELEMENT
8800056	SHORT LOWER CROSSPIECE - PACKAGING ELEMENT
8800057	CENTRAL CROSSPIECE - PACKAGING ELEMENT
8800058	TAP PROTECTION - PACKAGING ELEMENT
8900047	CORNER PROTECTOR FOR PACKAGING

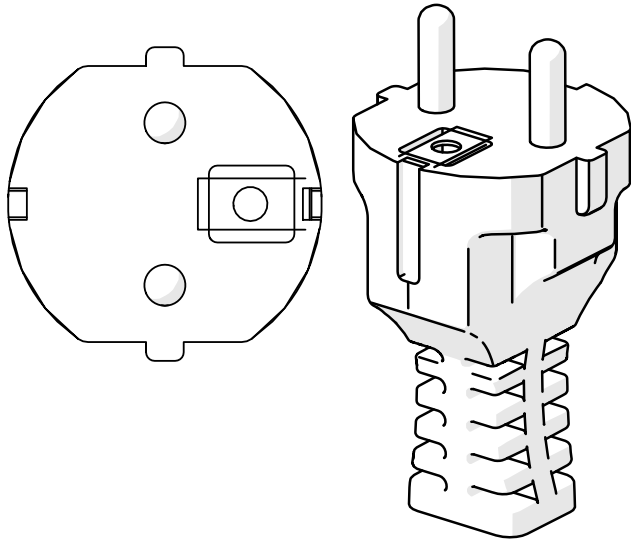
ATTENTION! The complete packaging includes the following codes and quantities:

- 8800012 x1
- 8800034 x1
- 8800036 x1
- 8800055 x2
- 8800056 x2
- 8800057 x1
- 8800058 x2
- 8900047 x8

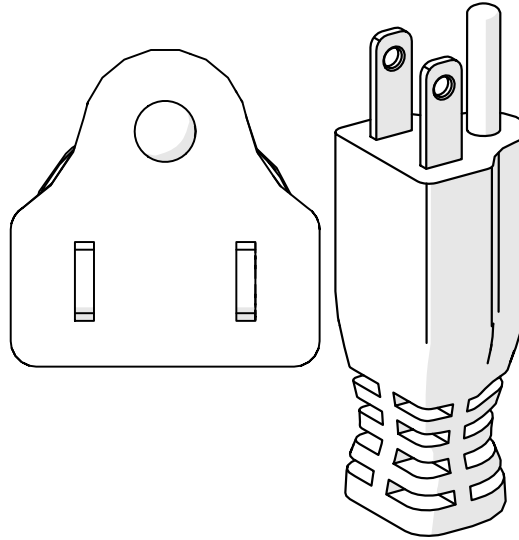


CODE	DESCRIPTION
1000201	DRIP TRAY PL62X
1400191	TANK COVER
1600038	ESPRESSO CUP RACK VIP LINE
1600077	CUP WARMER GRATE PL62-X
8600003	BLACK LELIT RUBBER INSERT

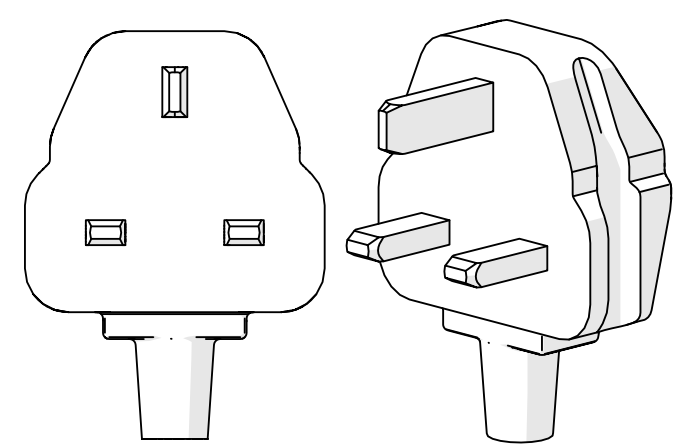
MC269 (EUROPE)



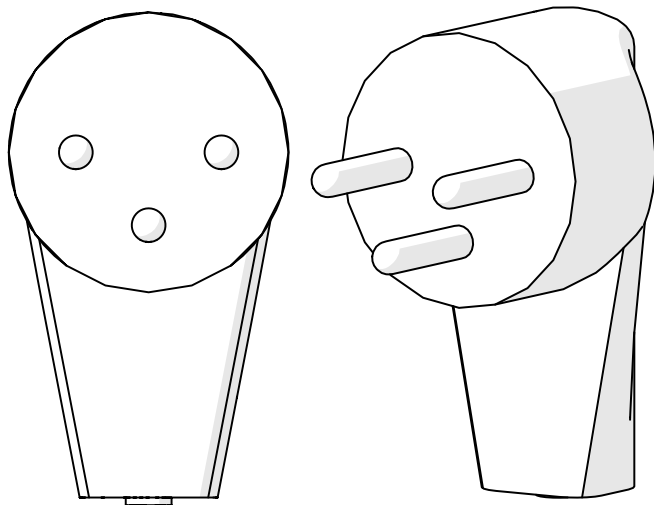
MC269-110 (UNITED STATES)



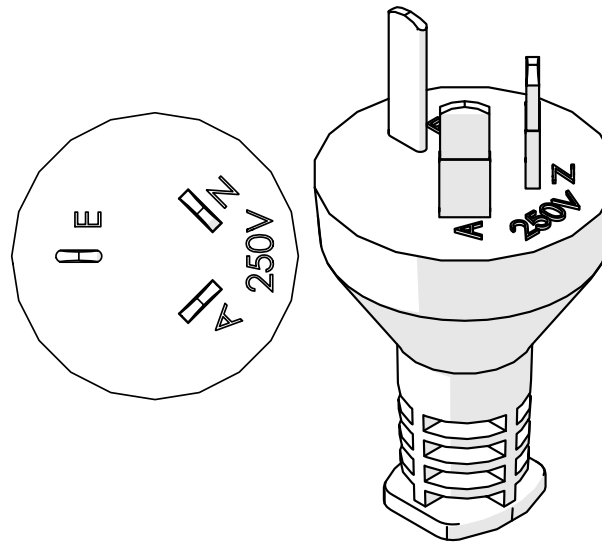
MC269UK (UNITED KINGDOM)



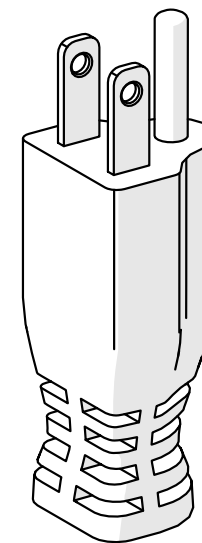
MC269IL (ISRAEL)



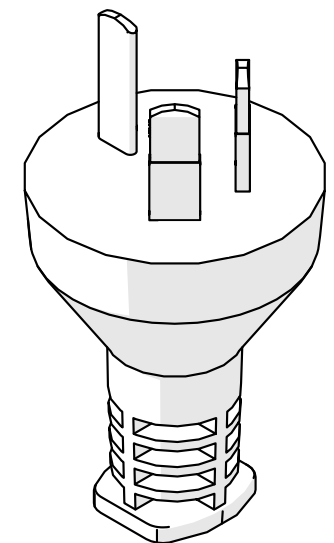
MC269AUS (AUSTRALIA)



MC269-100 (JAPAN)



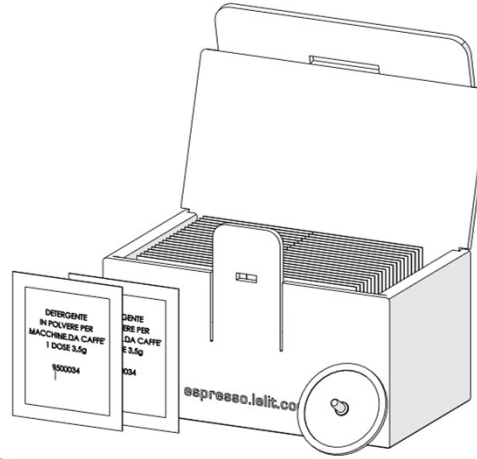
MC269CHN (CHINA)



PLA180S



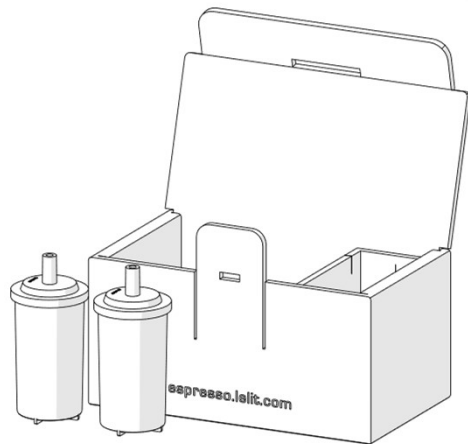
PLA9201



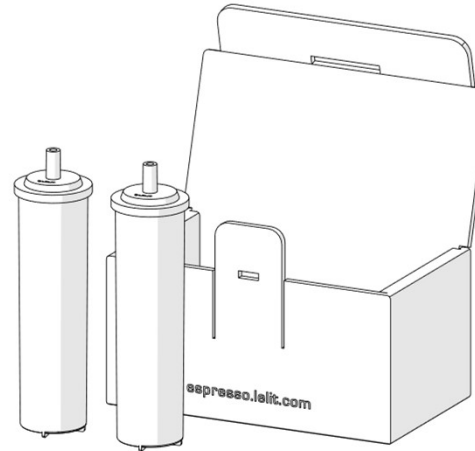
PLA9203



PLA930S

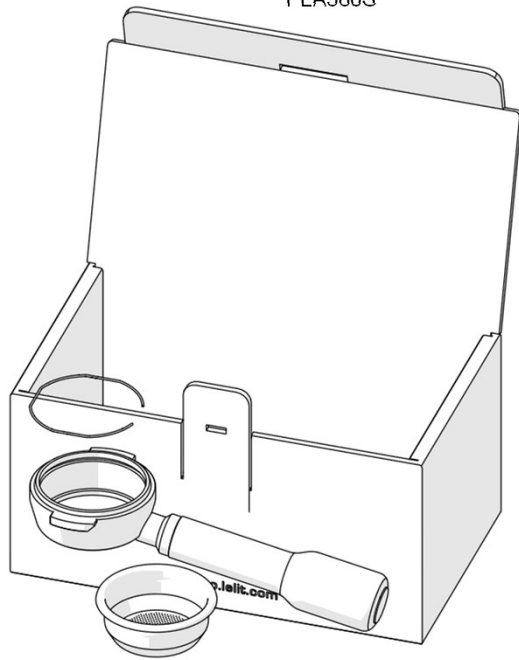


PLA930M

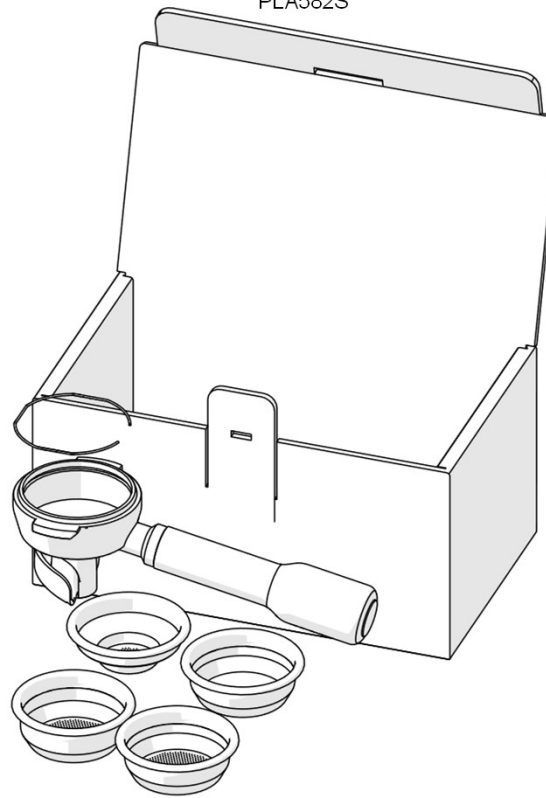


CODE	DESCRIPTION
PLA180S	LELIT58 FILTERS SET
PLA9201	PACKAGE OF 40 SINGLE-DOSE (3.5GR) GROUP CLEANER
PLA9203	PACKAGE OF 10 SINGLE-DOSE BOTTLE (25ML) STEAM WAND CLEANER
PLA930S	PACKAGE CONTAINING 2PCS OF 35LT RESIN FILTERS
PLA930M	PACKAGE CONTAINING 2PCS OF 70LT RESIN FILTERS

PLA580S



PLA582S



CODE

DESCRIPTION

PLA580S

LELIT58 BOTTOMLESS FILTERHOLDER

PLA582S

LELIT58 2WAYS FILTERHOLDER