

Solis of Switzerland

Type 1662 Scala Zero Static

Replacement of the ionizer needles support

How to replace the ionizer needles support to avoid reduction of the tunnel section and possible occlusion



Solis of Switzerland



Remove the bean container and the ground coffee container.

Solis of Switzerland

SINCE 1908

Solis



Remove the grinder.

Solis of Switzerland



Insert a fairly long and thin object (for example a watchmaker's screwdriver) into the hole located under the base of the grinder, and press to be able to remove the knob.

Solis of Switzerland

SINCE 1908

Solis



With the same tool, lever in the four circled points to release the housing.

Solis of Switzerland

SINCE 1908

Solis

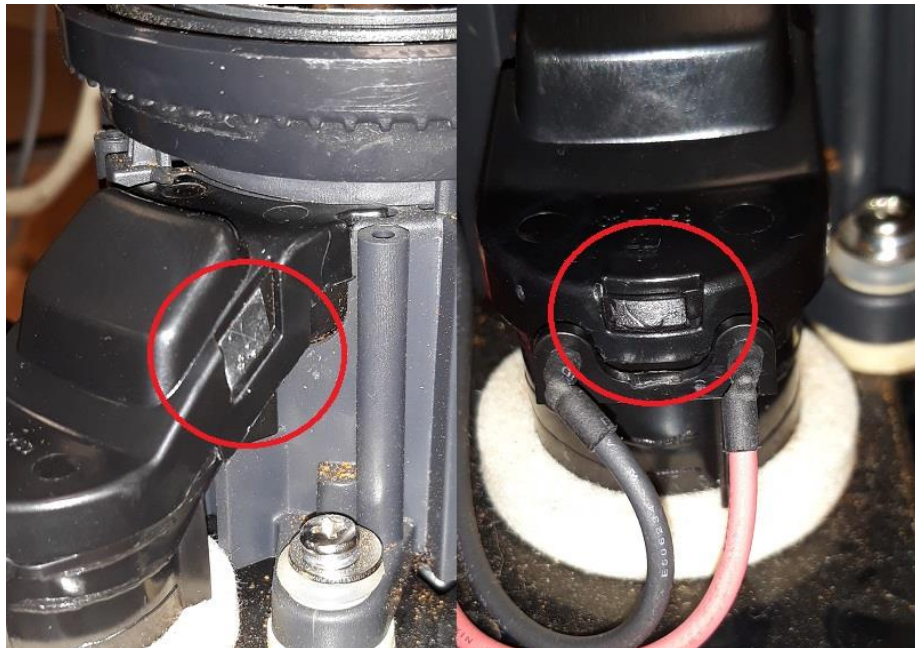


Pull the front panel (3) away while holding the selector for the fineness(4) in position.

Solis of Switzerland

SINCE 1908

Solis



Remove the channel cover by unhooking at least two of the three hooks that hold it.

Solis of Switzerland

2810.94: IONIZER NEEDLES SUPPORT



Pull the two ionizer needles out of the old holder, insert them into the new one and put the holder in place. Be sure to push the needles all the way through.

Solis of Switzerland

SINCE 1908

Solis



Make sure the support is in the correct position.

Solis of Switzerland

SINCE 1908

Solis



Replace the channel cover making sure that the hooks fit well.

Solis of Switzerland

SINCE 1908

Solis



Put the front panel back.

Solis of Switzerland

SINCE 1908

Solis



Put the housing back.

Solis of Switzerland

SINCE 1908

Solis



Make sure that the hooks fit well.

Solis of Switzerland

SINCE 1908

Solis



Put the knob back. The hook indicates the correct position.

Solis of Switzerland

SINCE 1908

Solis



Put the grinder back.

Solis of Switzerland

SINCE 1908

Solis



Put the bean container and the ground coffee container in position.