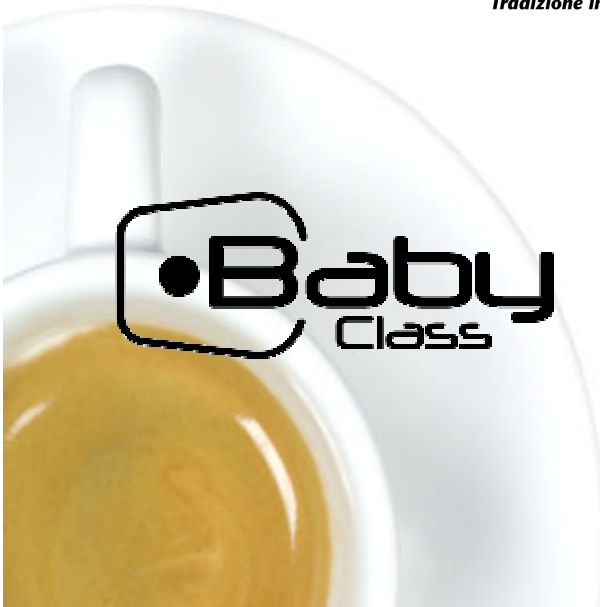


GAGGIA[®]
Tradizione in Continua Evoluzione

NEW BABY
CLASS
06

GAGGIA®
Tradizione in Continua Evoluzione



Elegant and definitely classic, **Baby class**, with its steel bodywork will become an integrant part of your home furnishing, a unique peace: you will be proud to show it to everyone.

Features:

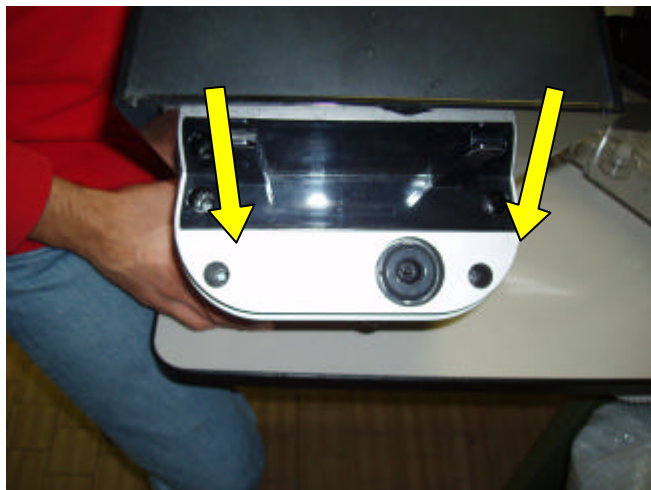
- Size cm. 24,5 (l) x 40 (h) x 26,5 (d)
- Weight: 7,5 kg
- Power supply: 230-240V/50Hz 1300W or 120V/60H 1425W
- Boiler Uni4514
- Rechargeable water tank : 1,6 l
- 1-cup and/or pod and 2-cup filter
- 15 bar pump pressure
- Electronic control panel soft-touch
- Group and filter holder: chromed brass
- Pannarello frother
- Solenoid Valve
- Bodywork: Stainless Steel



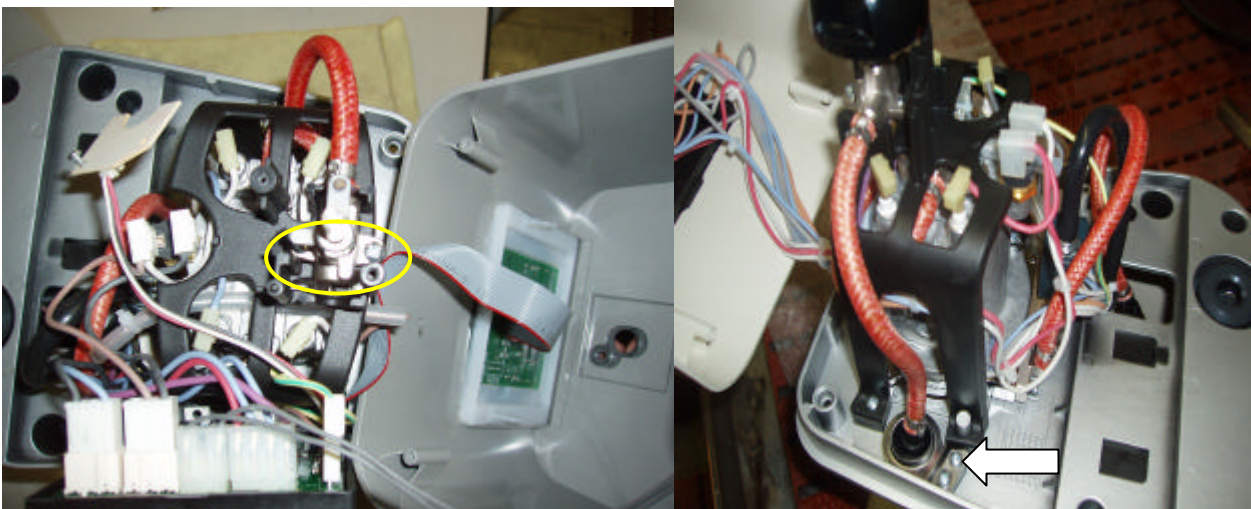
DIRECTIONS

Disassembling the upper bodywork:

- Loosen the screw underneath the steam knob (see red arrow)
- Loosen the two screws underneath the water reservoir (see yellow arrows)
- Loosen the two screws on the components plate (filter-holder attachment) – see blue arrows



Steam valve:



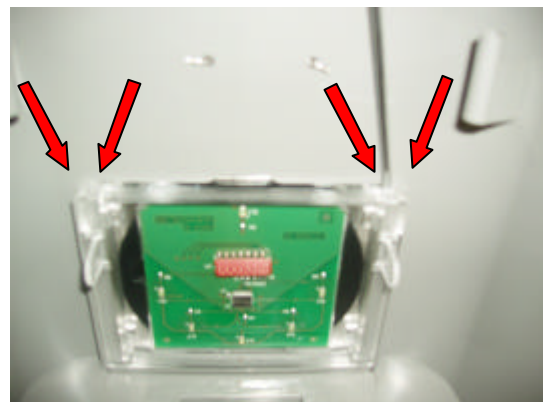
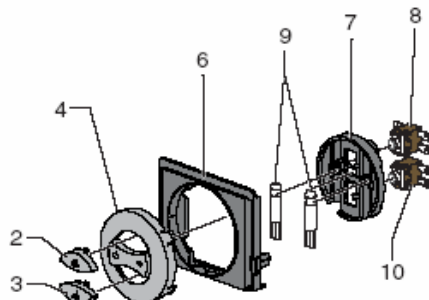
- The steam valve assembly with cam is fastened by two screws supporting the steam valve (see yellow marking)
- The steam valve pipe is in reinforced silicon, fastened by two screws to the components plate (see white arrow)

Boiler:

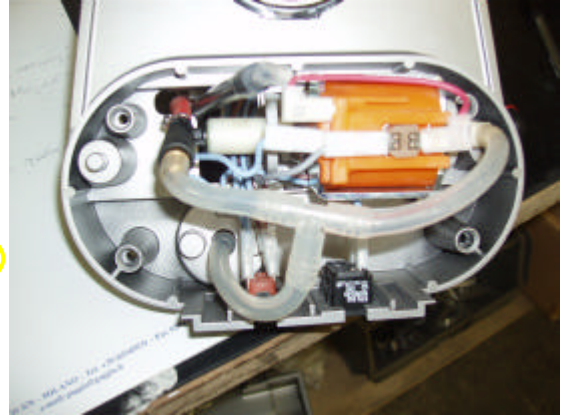
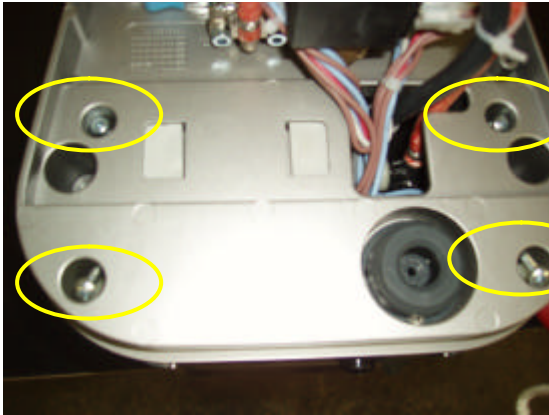
- Standard

Switches assembly:

- To remove the switches assembly from the bodywork, use a small screwdriver to lever the corners of the plastic keyboard support.



Components plate:



- Remove the components plate by loosening the four screws behind the boiler.
- The pump, the power cord connection and the ON-OFF switch are located underneath the plate.

Lower bodywork:

Remove the lower bodywork by loosening the four screws under the lower plate assembly.